

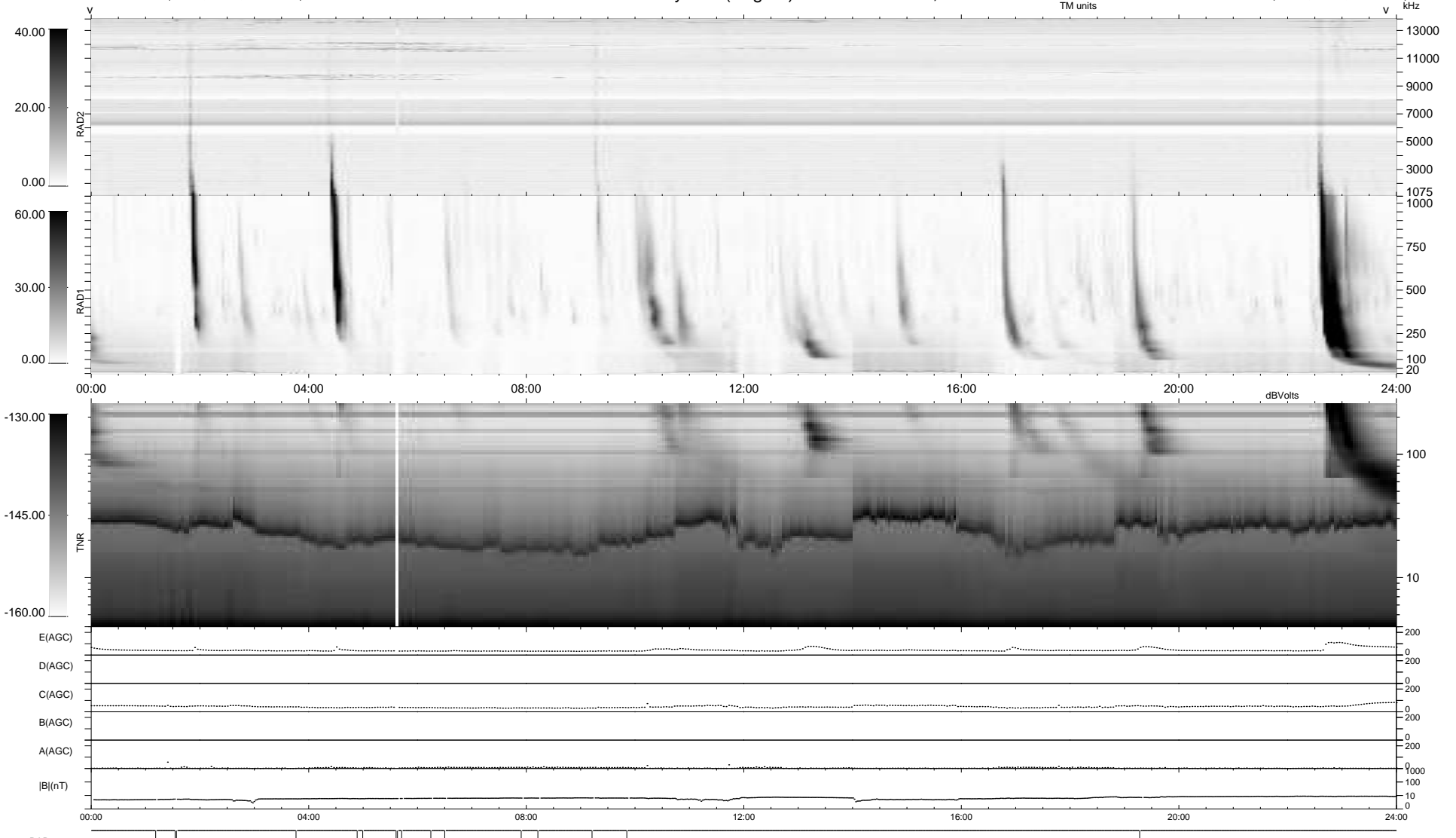
16 bad + 923 good MF/939MF projected (98%) - 0 missing MFs  
 Avg interval = 180 secs  
 Re = 258.40 (243.85, -83.78, 17.03 GSE)

windlib 2.0b

LZ version = v01

### WIND/WAVES Summary Plot (Page 1) for 01-JUN-2012, DOY = 153

DAILY 2012-06-06 12:44:41  
 Re = 257.87 (242.65, -85.70, 16.54 GSE)



RAD2  
 Antenna Ey  
 Mode LIN(1)  
 SUM/SEP SEP  
 Toggle OFF

RAD1  
 Antenna Ex  
 Mode LIS(2,4)  
 SUM/SEP SUM  
 Toggle OFF

TNR  
 Antenna ExEy  
 Mode A-32  
 Sweep ACE