

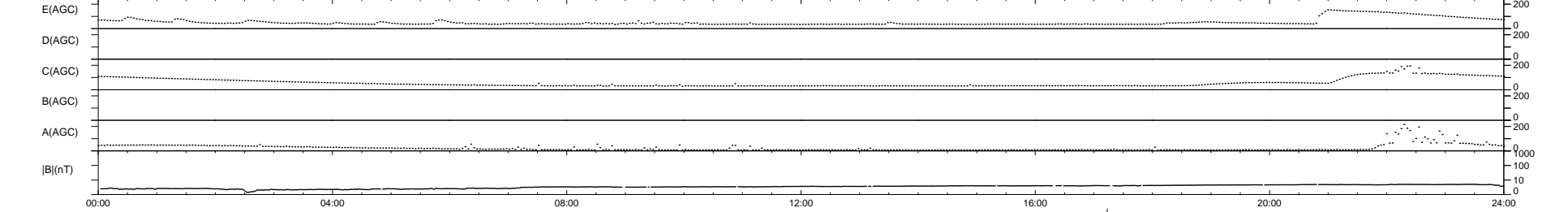
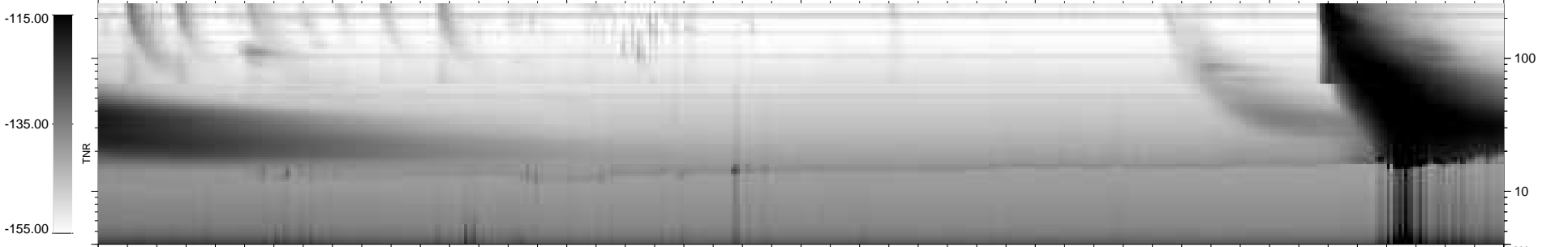
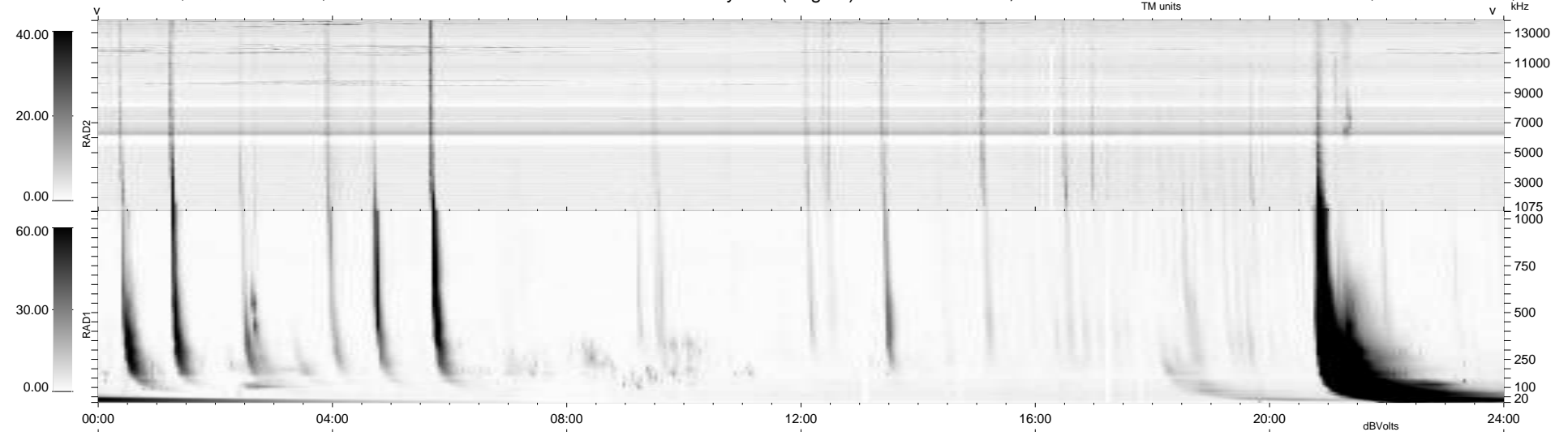
17 bad + 921 good MF/939MF projected (98%) - 1 missing MF
 Avg interval = 180 secs
 Re = - 261.52 (250.93, -70.95, 19.72 GSE)

windlib 2.0b

LZ version = v01

WIND/WAVES Summary Plot (Page 1) for 26-MAY-2012, DOY = 147

DAILY 2012-06-06 12:39:06
 Re = 261.05 (249.83, -73.21, 19.31 GSE)



RAD2
 Antenna Ey
 Mode LIN(1)
 SUM/SEP SEP
 Toggle OFF

RAD1
 Antenna Ex
 Mode LIS(2,4)
 SUM/SEP SUM
 Toggle OFF

TNR
 Antenna ExEy
 Mode A-32
 Sweep ACE