

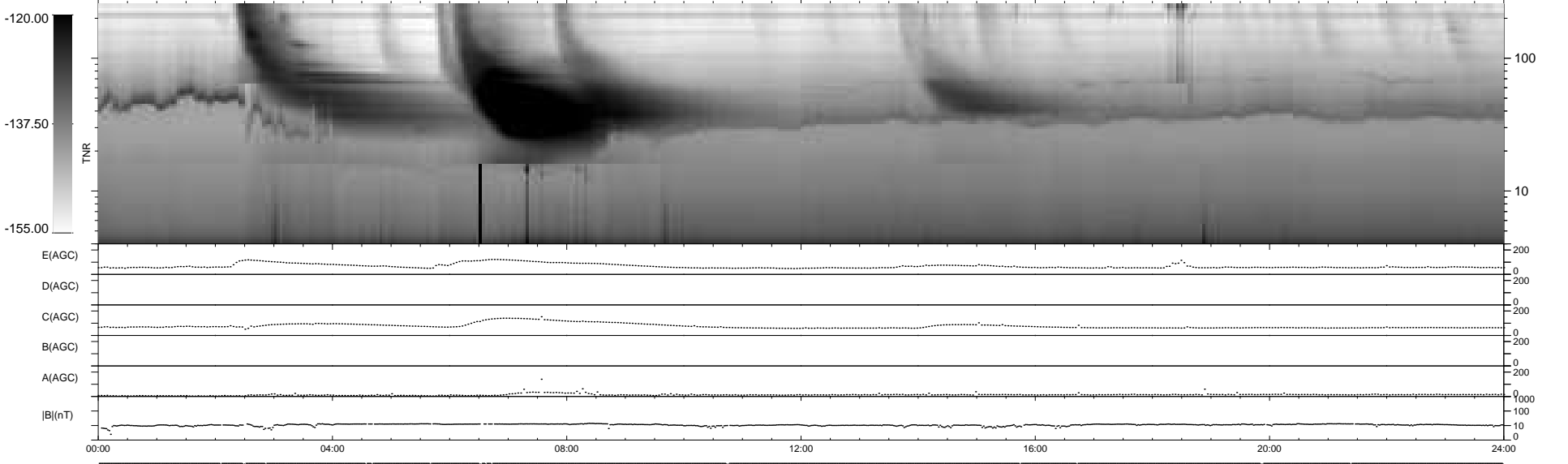
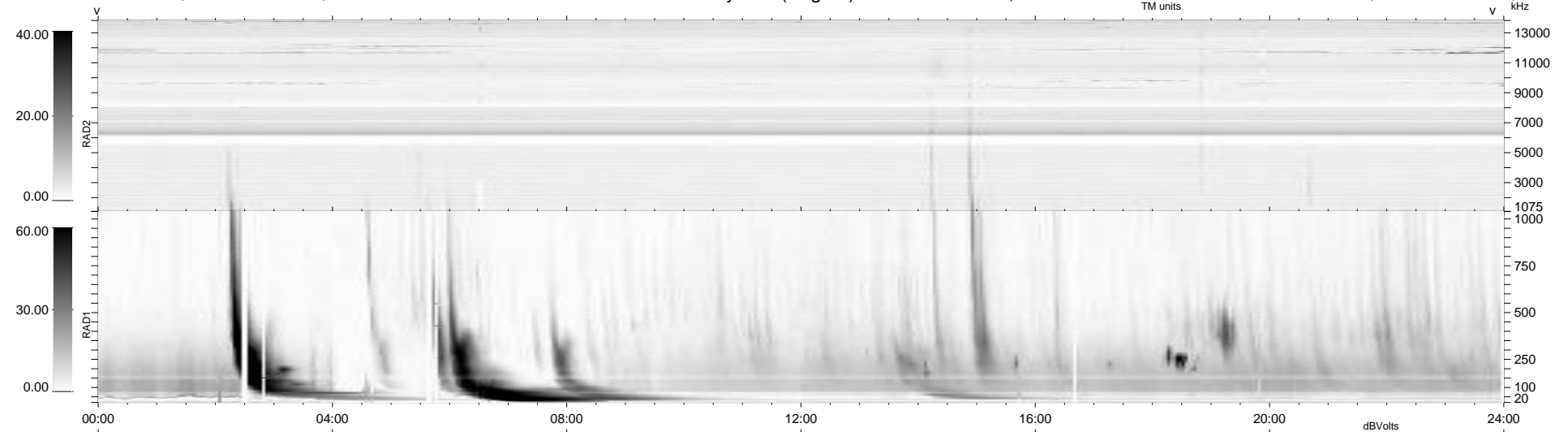
19 bad + 920 good MF/939MF projected (97%) - 0 missing MFs
 Avg interval = 180 secs
 Re = -263.01 (254.89, -61.27, 21.20 GSE)

windlib 2.0b

LZ version = v02

WIND/WAVES Summary Plot (Page 1) for 22-MAY-2012, DOY = 143

DAILY 2012-06-06 12:35:21
 Re = 262.71 (254.00, -63.76, 20.86 GSE)



RAD2
 Antenna Ey
 Mode LIN(1)
 SUM/SEP SEP
 Toggle OFF

RAD1
 Antenna Ex
 Mode LIS(2,4)
 SUM/SEP SUM
 Toggle OFF

TNR
 Antenna ExEy
 Mode A-32
 Sweep ACE