

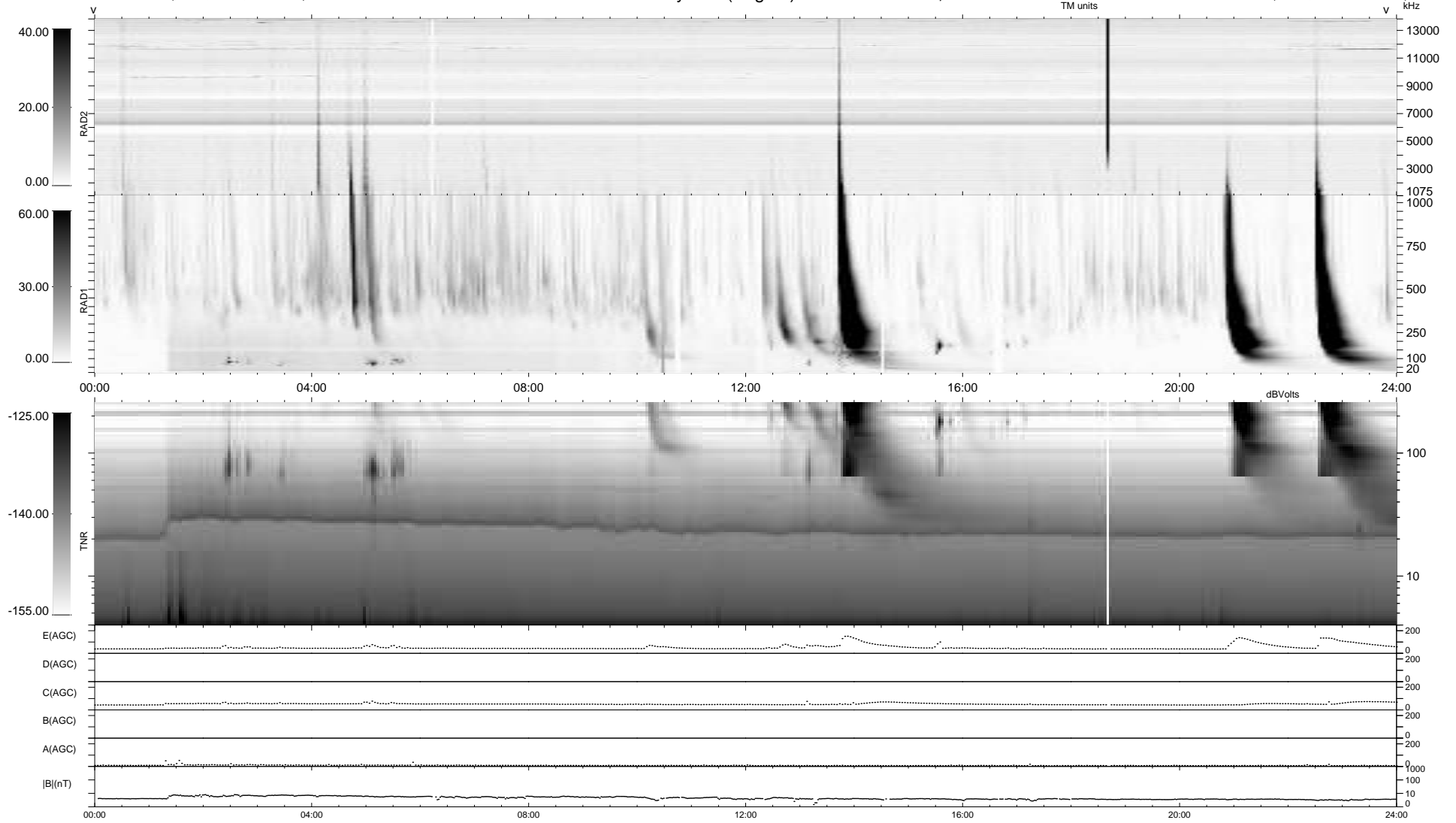
17 bad + 922 good MF/939MF projected (98%) - 0 missing MFs  
 Avg interval = 180 secs  
 Re = 263.47 (256.51, -56.05, 21.83 GSE)

windlib 2.0b

LZ version = v01

### WIND/WAVES Summary Plot (Page 1) for 20-MAY-2012, DOY = 141

DAILY 2012-06-06 12:33:29  
 Re = 263.27 (255.74, -58.67, 21.53 GSE)



RAD2 Antenna Ey .....  
 Mode LIN(1) .....  
 SUM/SEP SEP .....  
 Toggle OFF .....  
 RAD1 Antenna Ex .....  
 Mode LIS(2,4) .....  
 SUM/SEP SUM .....  
 Toggle OFF .....  
 TNR Antenna ExEy .....  
 Mode A-32 .....  
 Sweep ACE .....