

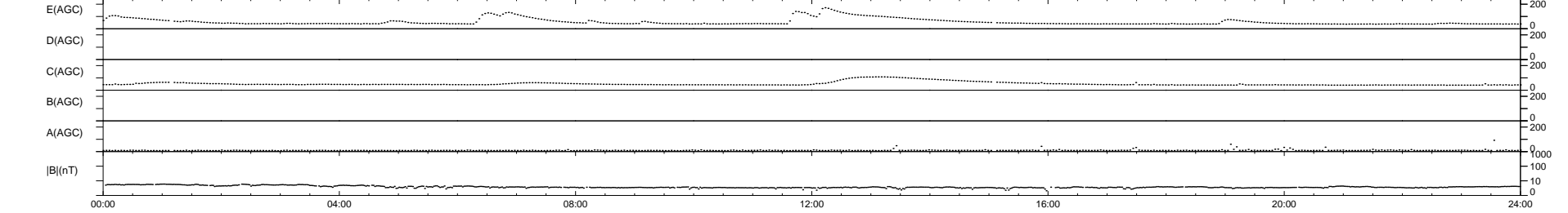
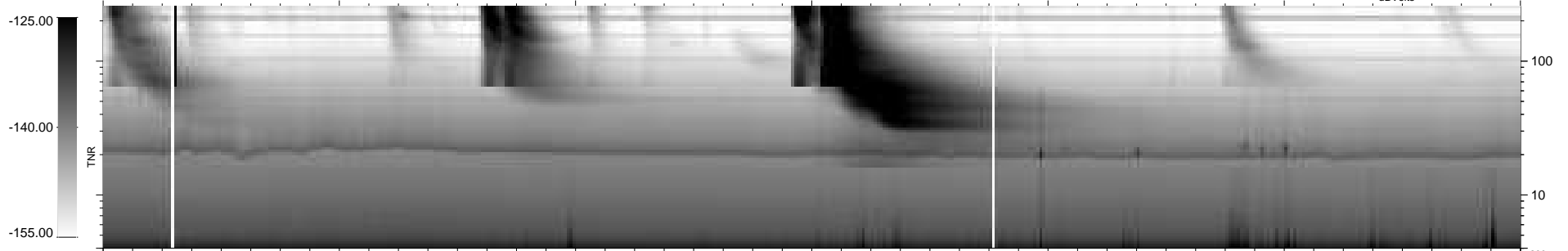
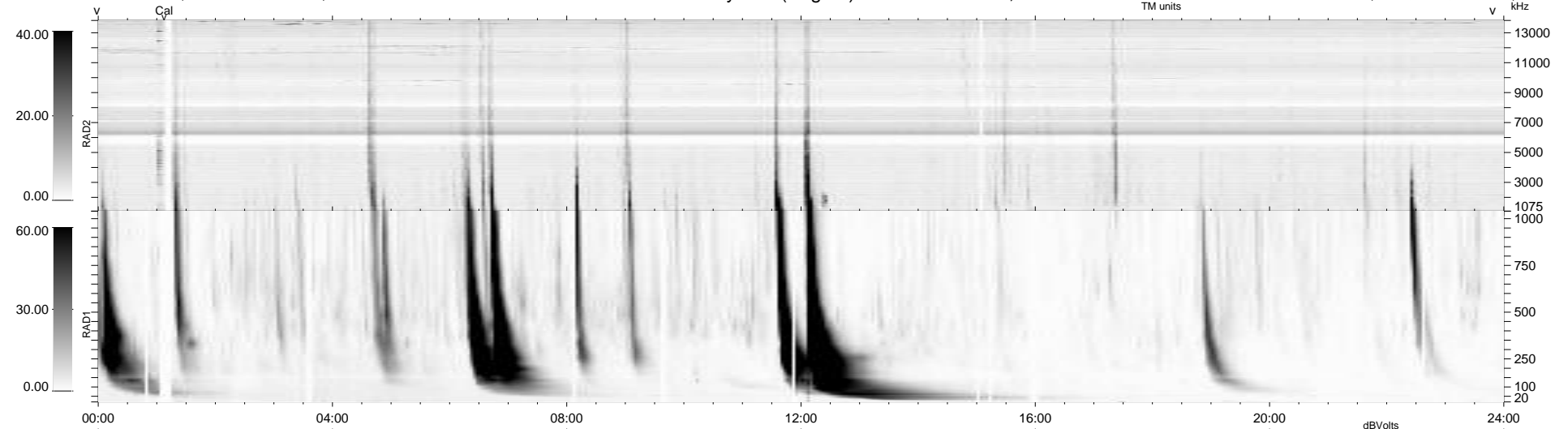
27 bad + 913 good MF/940MF projected (97%) - 0 missing MFs  
 Avg interval = 180 secs  
 Re = 263.62 (257.22, -53.34, 22.11 GSE)

windlib 2.0b

LZ version = v01

### WIND/WAVES Summary Plot (Page 1) for 19-MAY-2012, DOY = 140

DAILY 2012-06-06 12:32:33  
 Re = 263.47 (256.51, -56.03, 21.83 GSE)



RAD2  
 Antenna Ey  
 Mode LIN(1)  
 SUM/SEP SEP  
 Toggle OFF

RAD1  
 Antenna Ex  
 Mode LIS(2,4)  
 SUM/SEP SUM  
 Toggle OFF

TNR  
 Antenna ExEy  
 Mode A-32  
 Sweep ACE