

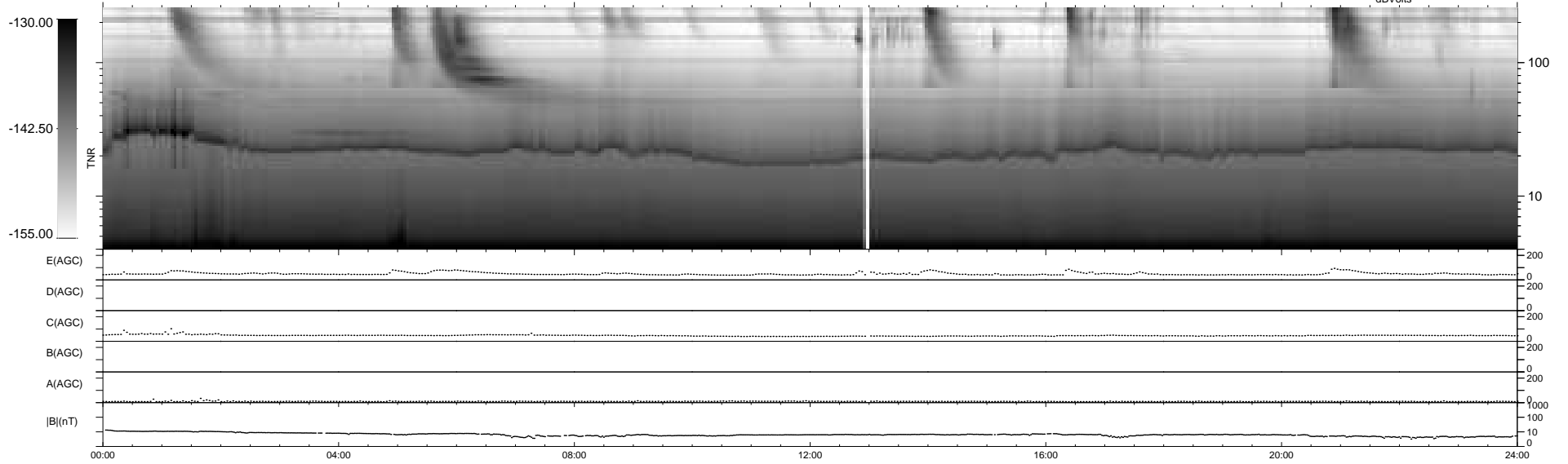
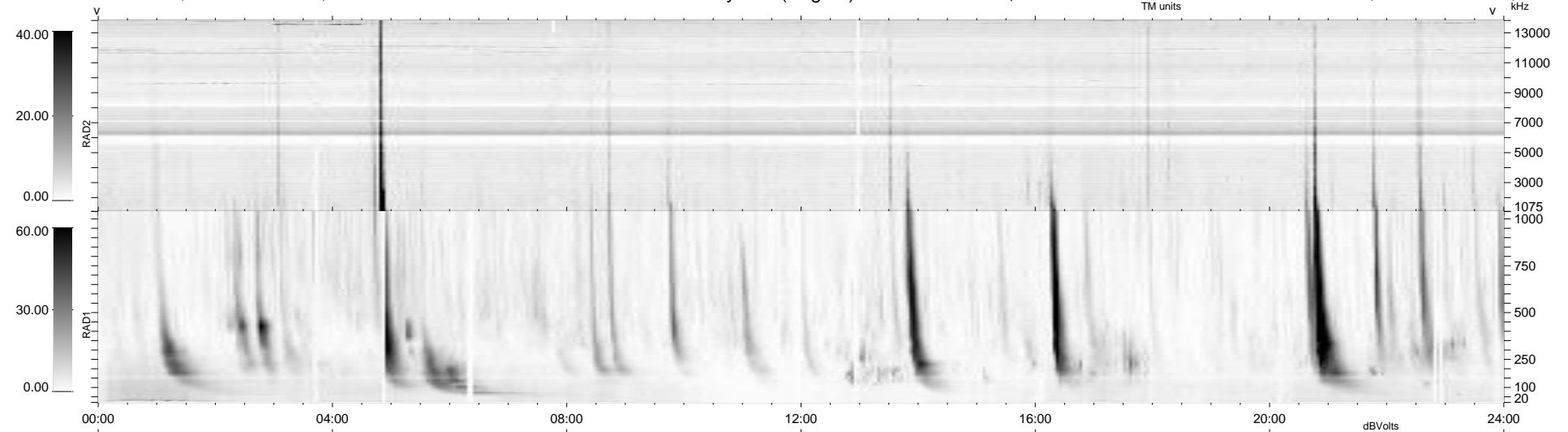
28 bad + 911 good MF/939MF projected (97%) - 0 missing MFs  
 Avg interval = 180 secs  
 Re = 263.72 (257.86, -50.55, 22.37 GSE)

windlib 2.0b

LZ version = v02

### WIND/WAVES Summary Plot (Page 1) for 18-MAY-2012, DOY = 139

DAILY 2012-06-06 12:31:36  
 Re = 263.62 (257.22, -53.32, 22.11 GSE)



RAD2  
 Antenna Ey .....  
 Mode LIN(1) .....  
 SUM/SEP SEP .....  
 Toggle OFF .....  
 RAD1  
 Antenna Ex .....  
 Mode LIS(2/4) .....  
 SUM/SEP SUM .....  
 Toggle OFF .....  
 TNR  
 Antenna ExEy .....  
 Mode A-32 .....  
 Sweep ACE .....