

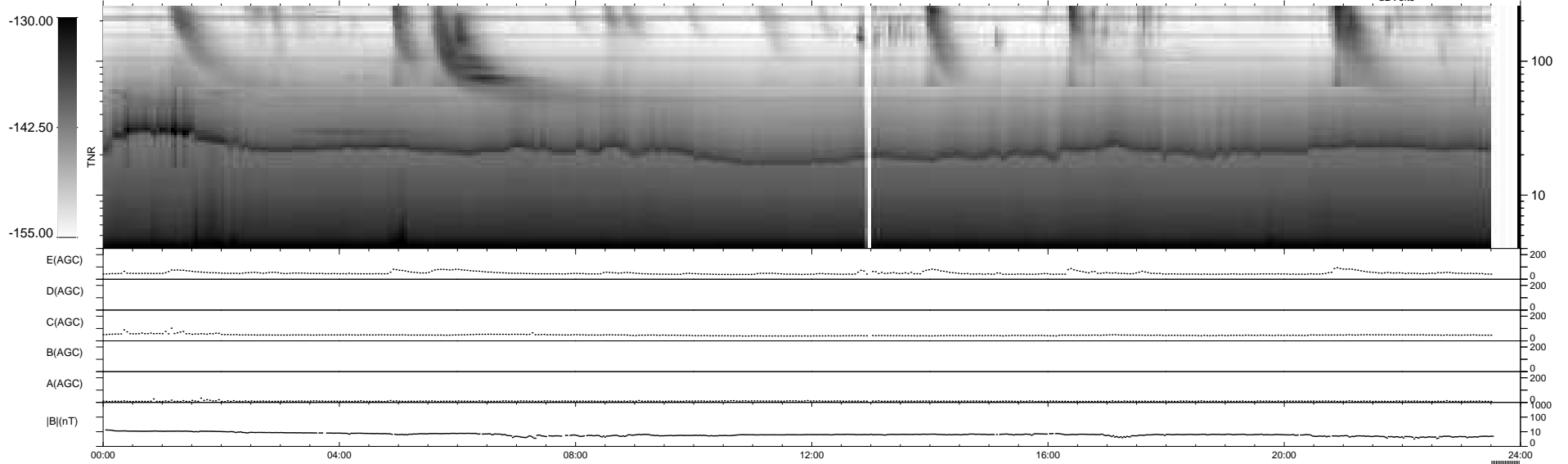
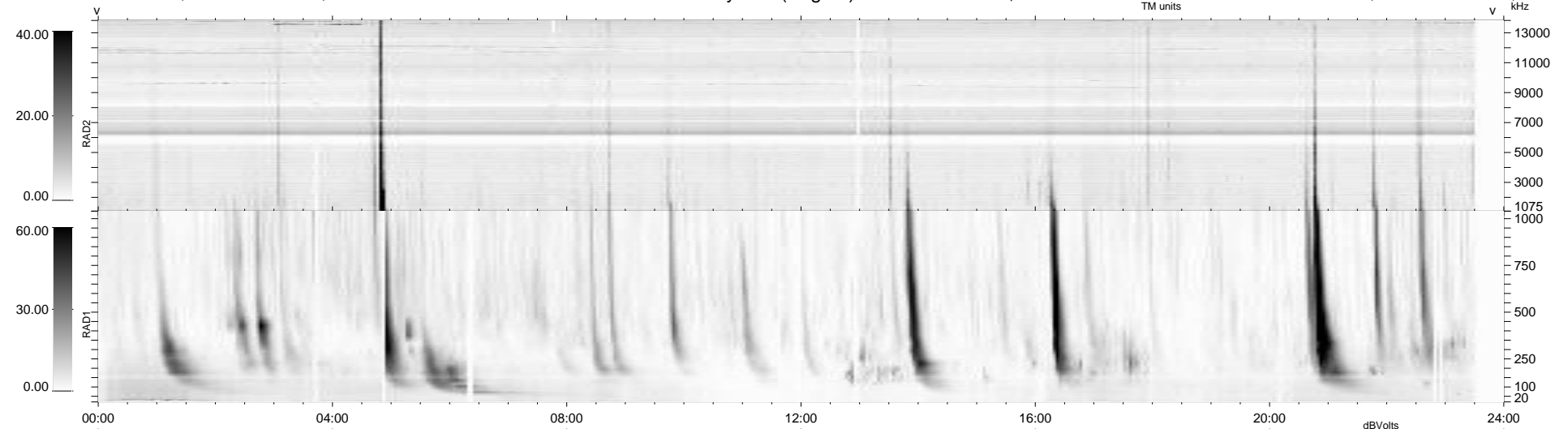
28 bad + 892 good MF/939MF projected (94%) - 19 missing MFs  
 Avg interval = 180 secs  
 Re = 263.72 (257.86, -50.55, 22.37 GSE)

windlib 2.0b

LZ version = v01

### WIND/WAVES Summary Plot (Page 1) for 18-MAY-2012, DOY = 139

DAILY 2012-05-20 02:16:08  
 Re = 263.62 (257.22, -53.32, 22.11 GSE)



```

RAD2
Antenna Ey .....
Mode LIN(1) .....
SUM/SEP SEP .....
Toggle OFF .....

RAD1
Antenna Ex .....
Mode LIS(2,4) .....
SUM/SEP SUM .....
Toggle OFF .....

TNR
Antenna ExEy .....
Mode A-32 .....
Sweep ACE .....
  
```