

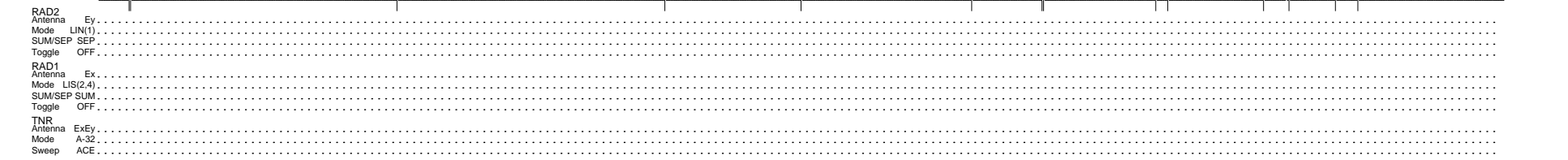
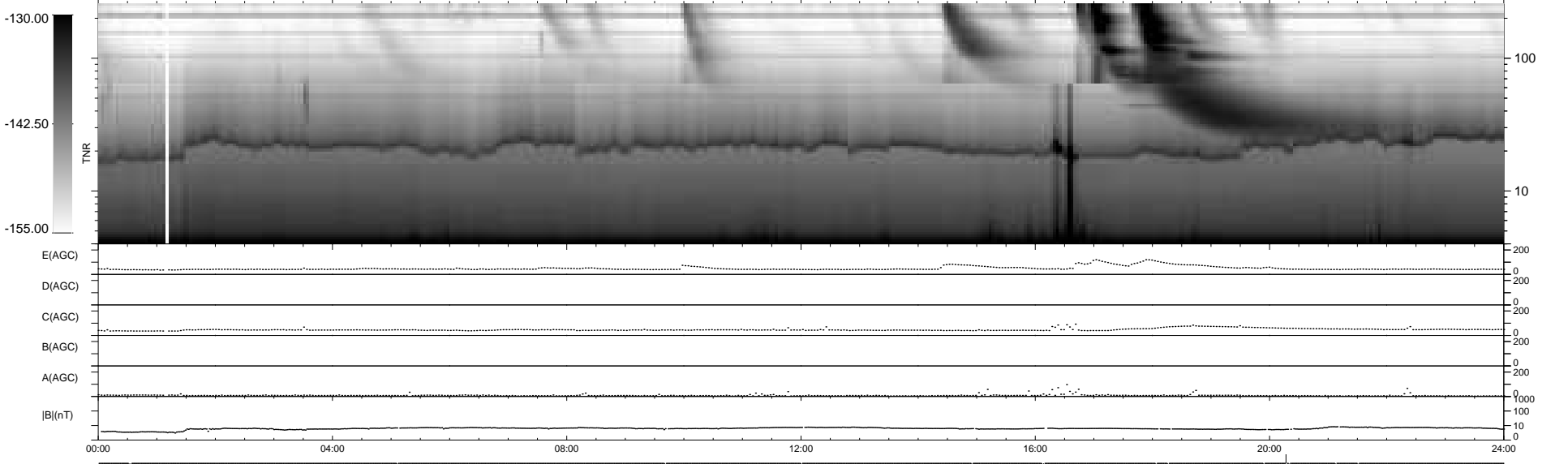
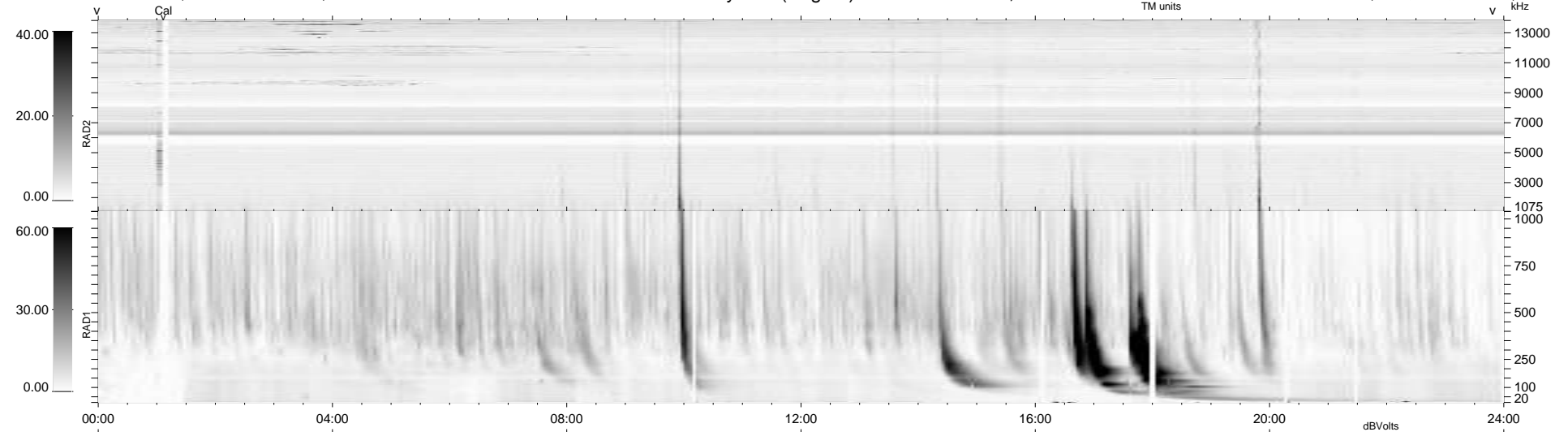
14 bad + 924 good MF/939MF projected (98%) - 1 missing MF
 Avg interval = 180 secs
 Re = 263.74 (259.40, -41.75, 23.01 GSE)

windlib 2.0b

LZ version = v01

WIND/WAVES Summary Plot (Page 1) for 15-MAY-2012, DOY = 136

DAILY 2012-06-06 12:28:47
 Re = 263.77 (258.95, -44.74, 22.82 GSE)



```

RAD2
Antenna Ey .....
Mode LIN(1) .....
SUM/SEP SEP .....
Toggle OFF .....

RAD1
Antenna Ex .....
Mode LIS(2,4) .....
SUM/SEP SUM .....
Toggle OFF .....

TNR
Antenna ExEy .....
Mode A-32 .....
Sweep ACE .....
  
```