

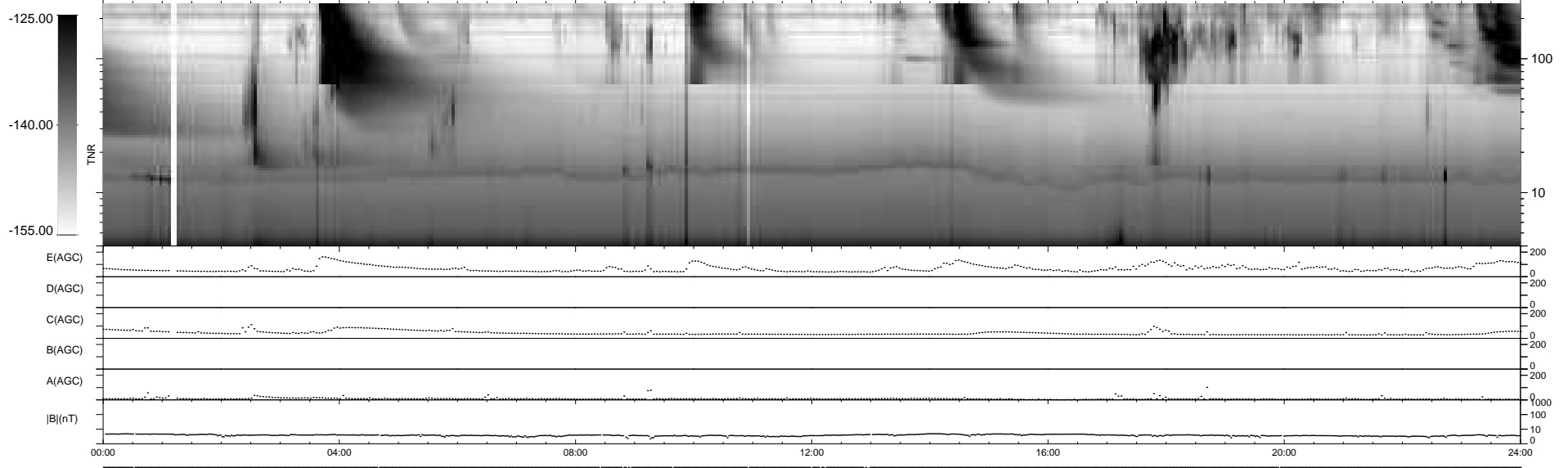
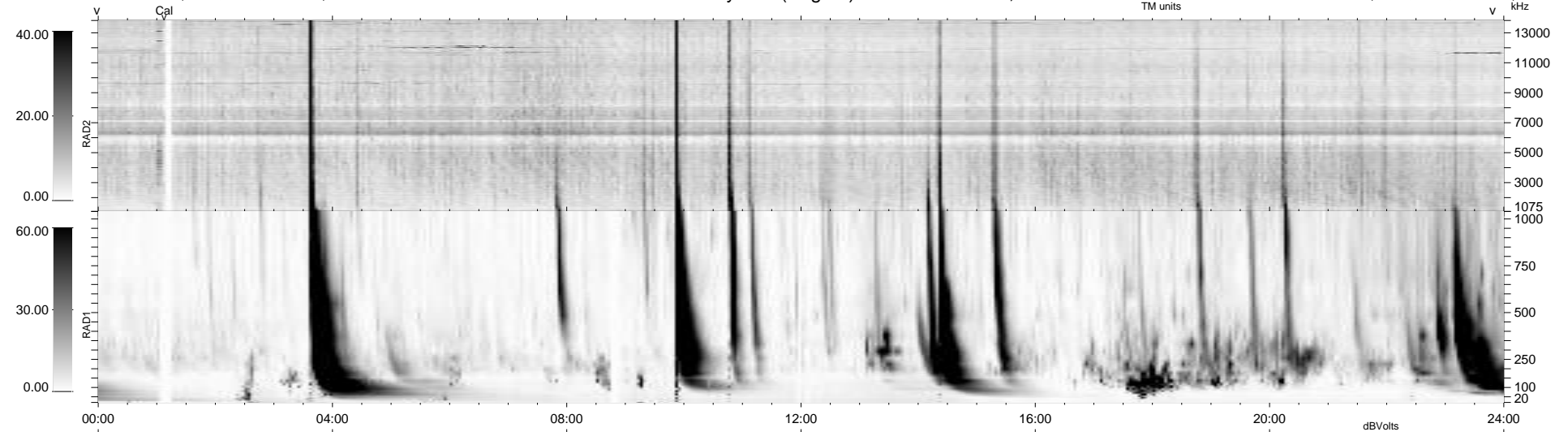
15 bad + 925 good MF/940MF projected (98%) - 0 missing MFs
 Avg interval = 180 secs
 Re = 263.33 (260.67, -28.99, 23.52 GSE)

windlib 2.0b

LZ version = v01

WIND/WAVES Summary Plot (Page 1) for 11-MAY-2012, DOY = 132

DAILY 2012-06-06 12:25:02
 Re = 263.46 (260.42, -32.26, 23.43 GSE)



RAD2
 Antenna Ey
 Mode LIN(1)
 SUM/SEP SEP
 Toggle OFF

RAD1
 Antenna Ex
 Mode LIS(2,4)
 SUM/SEP SUM
 Toggle OFF

TNR
 Antenna ExEy
 Mode A-32
 Sweep ACE