

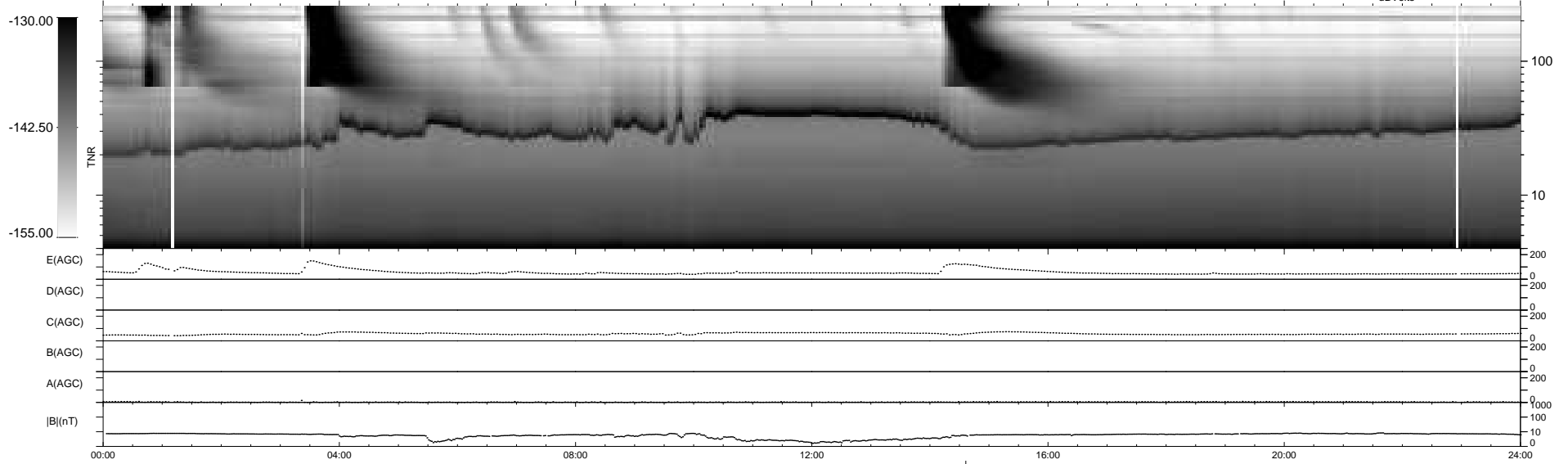
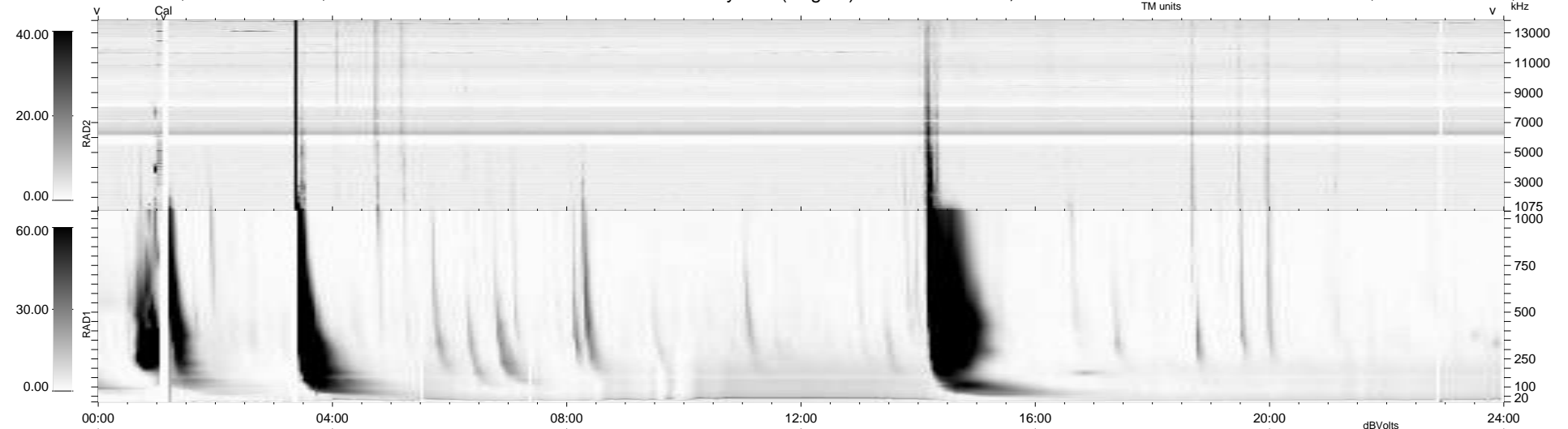
12 bad + 926 good MF/939MF projected (98%) - 1 missing MF  
 Avg interval = 180 secs  
 Re = 262.90 (261.39, -15.22, 23.63 GSE)

windlib 2.0b

LZ version = v01

### WIND/WAVES Summary Plot (Page 1) for 07-MAY-2012, DOY = 128

DAILY 2012-06-06 12:21:19  
 Re = 262.98 (261.24, -18.70, 23.64 GSE)



```

RAD2
Antenna Ey .....
Mode LIN(1) .....
SUM/SEP SEP .....
Toggle OFF .....

RAD1
Antenna Ex .....
Mode LIS(2,4) .....
SUM/SEP SUM .....
Toggle OFF .....

TNR
Antenna ExEy .....
Mode A-32 .....
Sweep ACE .....
  
```