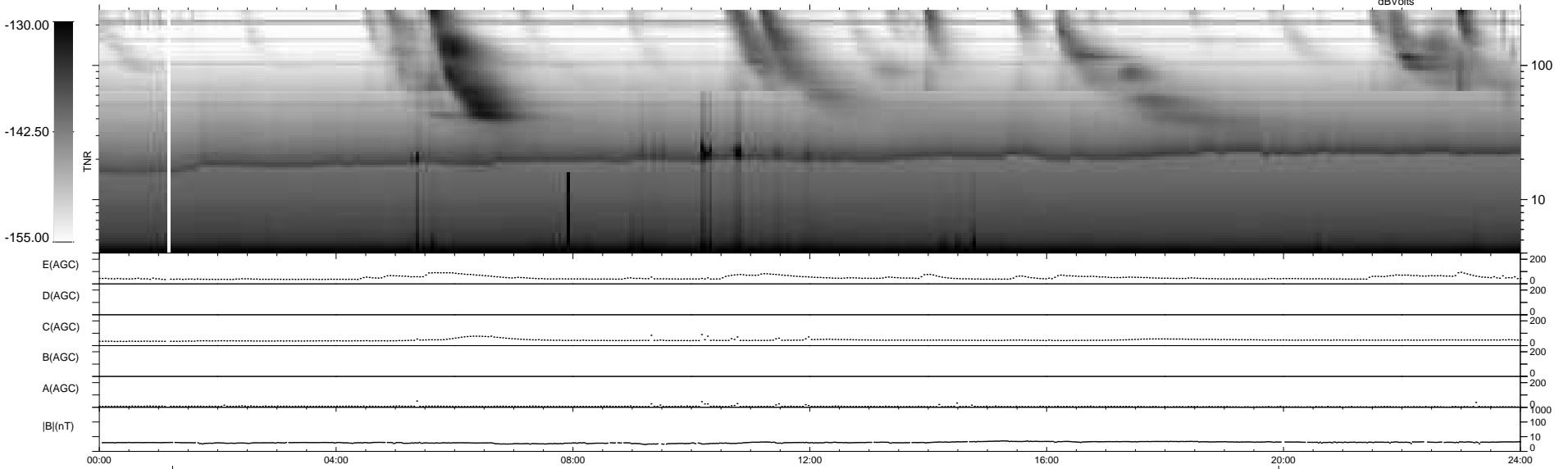
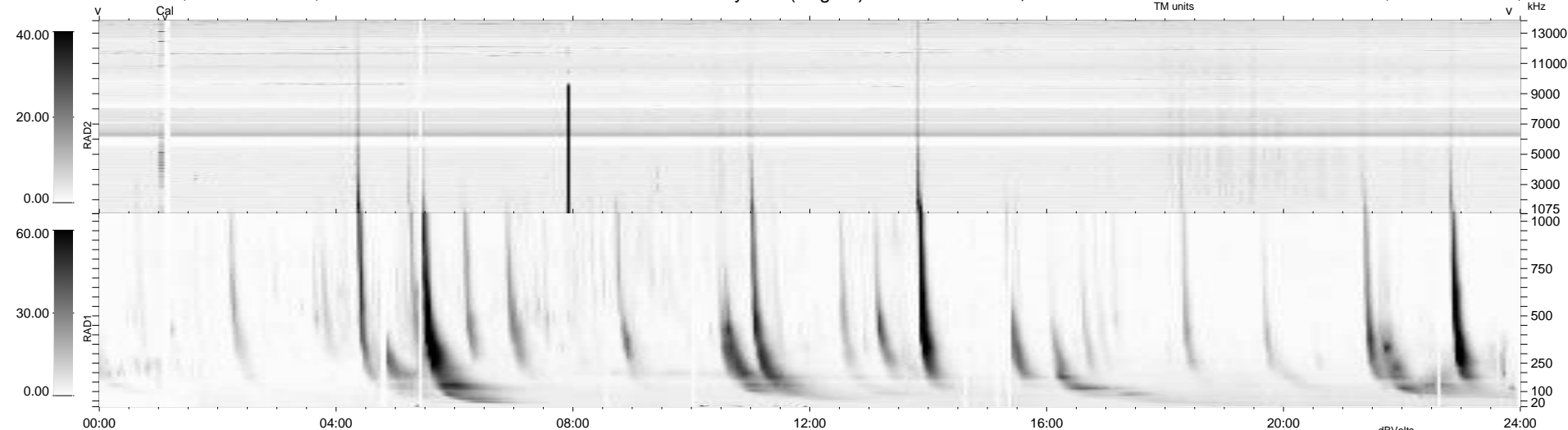


30 bad + 907 good MF/939MF projected (96%) - 2 missing MFs
 Avg interval = 180 secs
 Re = 263.01 (261.92, 5.94, 23.17 GSE)

windlib 2.0b LZ version = v01

WIND/WAVES Summary Plot (Page 1) for 01-MAY-2012, DOY = 122

DAILY 2012-05-02 17:16:07
 Re = 262.94 (261.89, 2.48, 23.30 GSE)



```

RAD2
Antenna Ey .....
Mode LIN(1) .....
SUM/SEP SEP .....
Toggle OFF .....

RAD1
Antenna Ex .....
Mode LIS(2,4) .....
SUM/SEP SUM .....
Toggle OFF .....

TNR
Antenna ExEy .....
Mode A-32 .....
Sweep ACE .....
  
```