

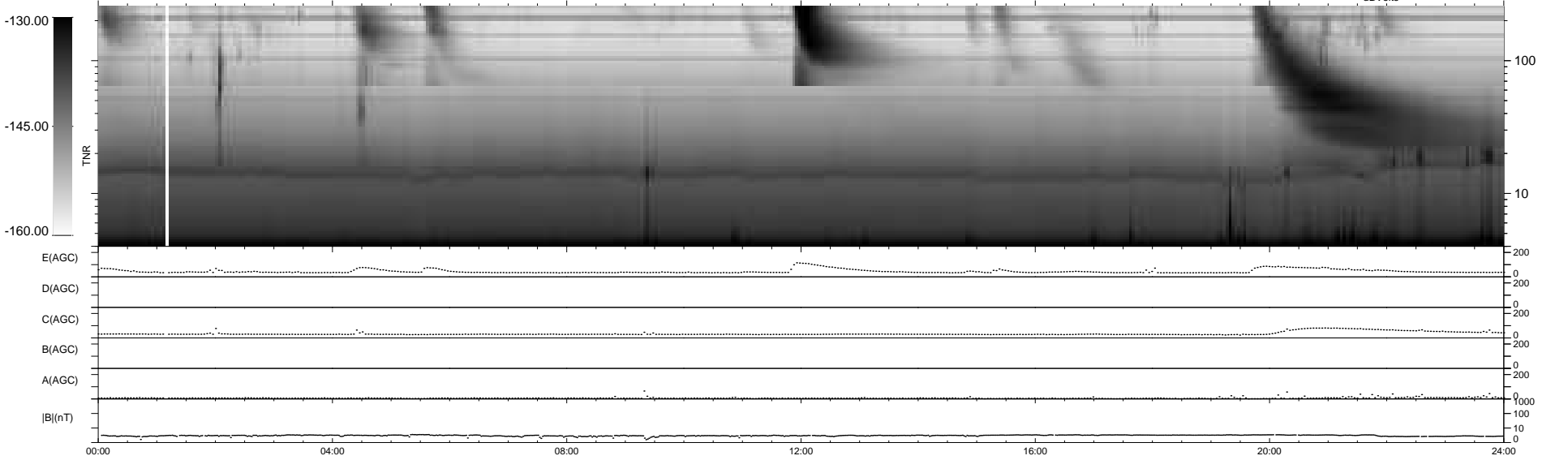
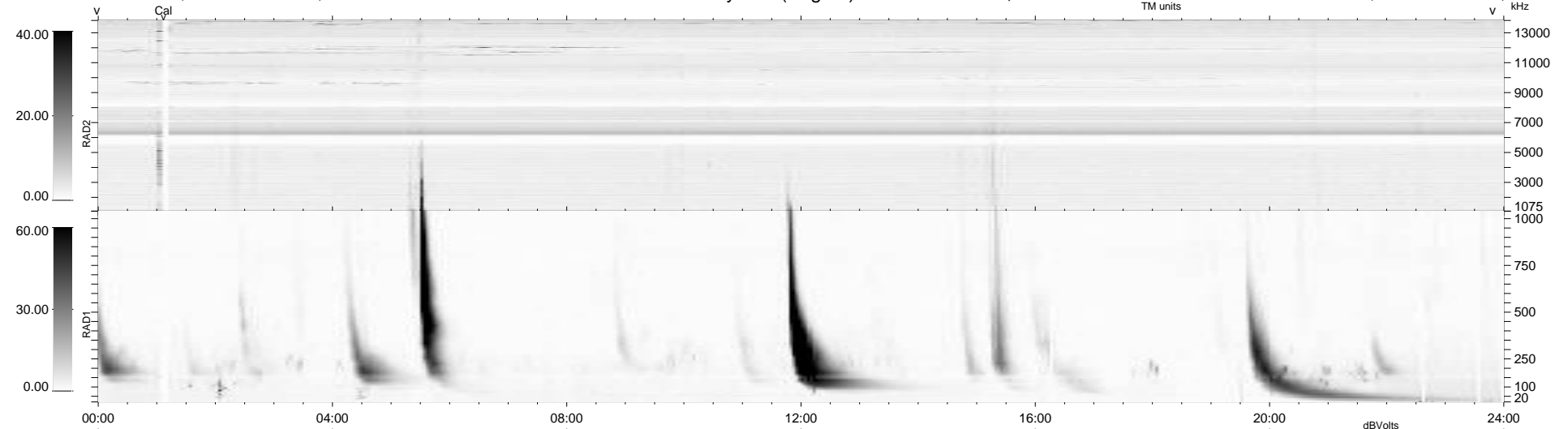
12 bad + 927 good MF/939MF projected (98%) - 0 missing MFs  
 Avg interval = 180 secs  
 Re = 263.14 (261.83, 12.77, 22.87 GSE)

windlib 2.0b

LZ version = v01

### WIND/WAVES Summary Plot (Page 1) for 29-APR-2012, DOY = 120

DAILY 2012-04-30 19:16:06  
 Re = 263.08 (261.90, 9.40, 23.03 GSE)



RAD2  
 Antenna Ey  
 Mode LIN(1)  
 SUM/SEP SEP  
 Toggle OFF

RAD1  
 Antenna Ex  
 Mode LIS(2,4)  
 SUM/SEP SUM  
 Toggle OFF

TNR  
 Antenna ExEy  
 Mode A-32  
 Sweep ACE