

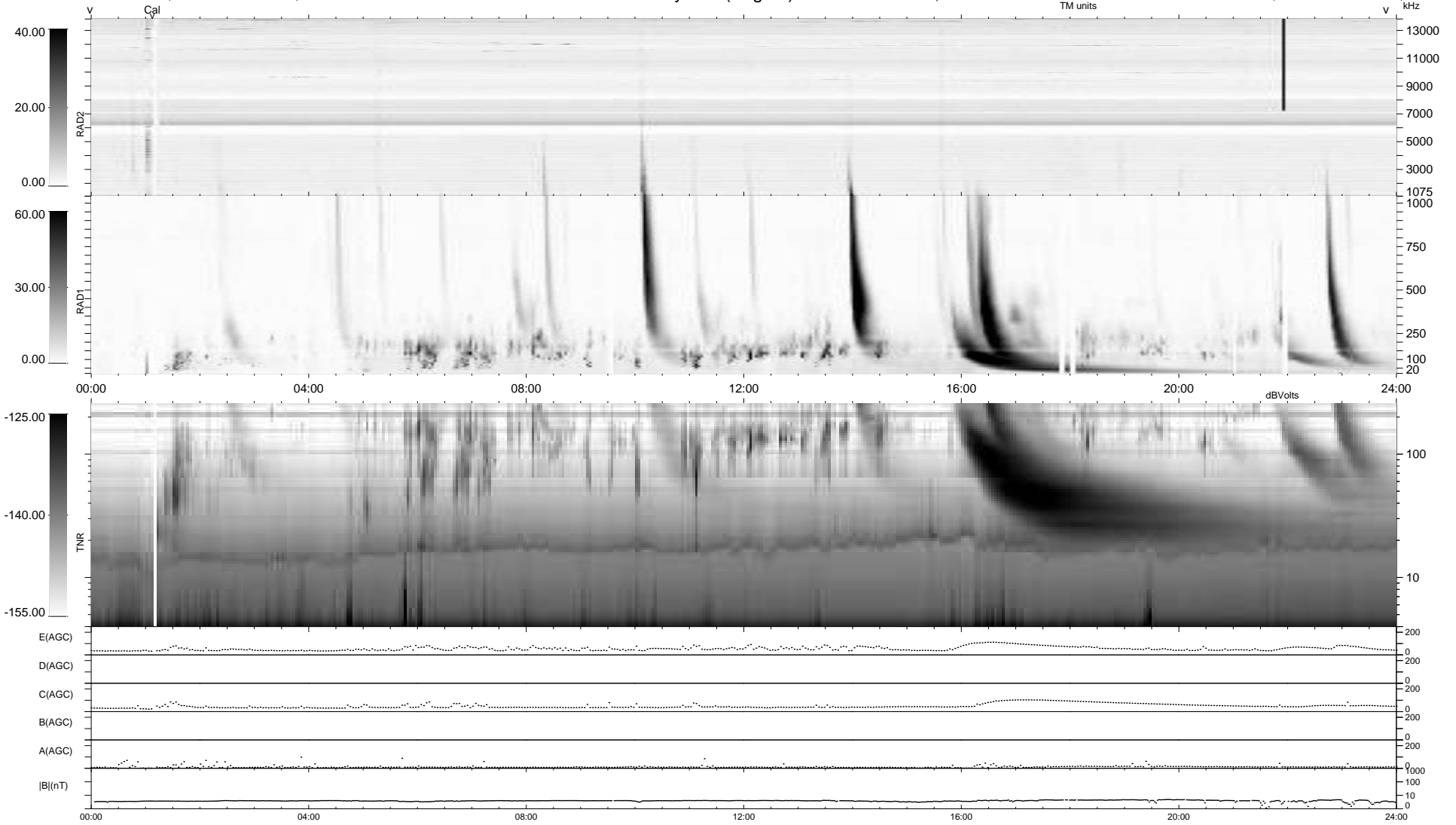
14 bad + 925 good MF/939MF projected (98%) - 0 missing MFs
 Avg interval = 180 secs
 Re = - 263.22 (261.53, 19.43, 22.50 GSE)

windlib 2.0b

LZ version = v01

WIND/WAVES Summary Plot (Page 1) for 27-APR-2012, DOY = 118

DAILY 2012-04-28 19:16:06
 Re = 263.19 (261.71, 16.15, 22.69 GSE)



RAD2 Antenna Ey
 Mode LIN(1)
 SUM/SEP SEP
 Toggle OFF
 RAD1 Antenna
 Mode
 SUM/SEP
 Toggle
 TNR Antenna ExEy
 Mode A-32
 Sweep ACE