

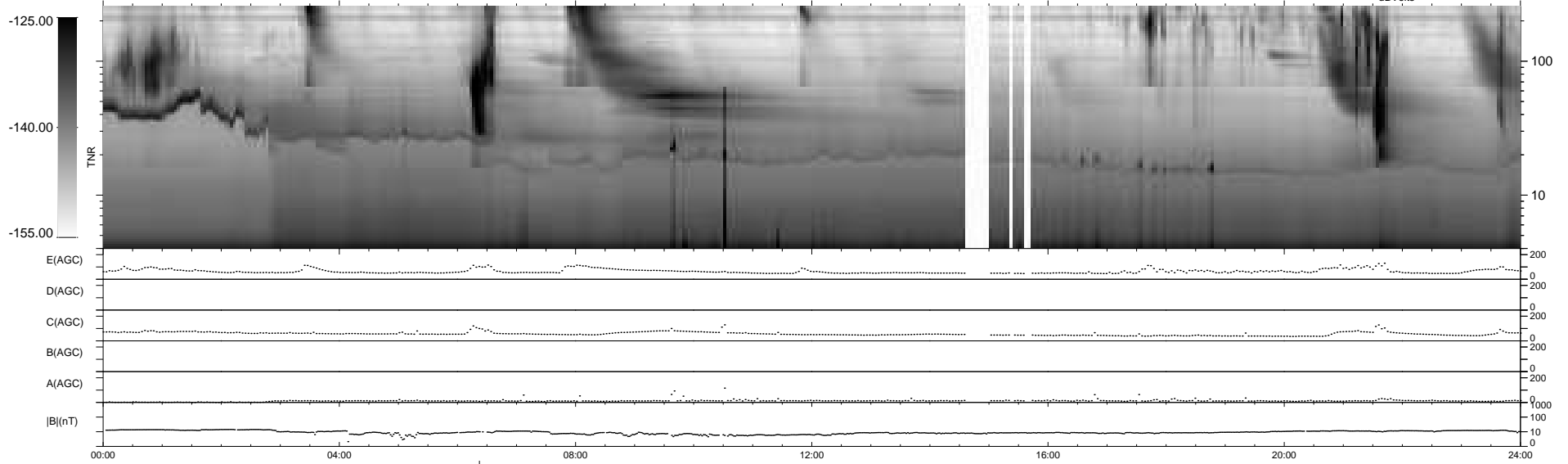
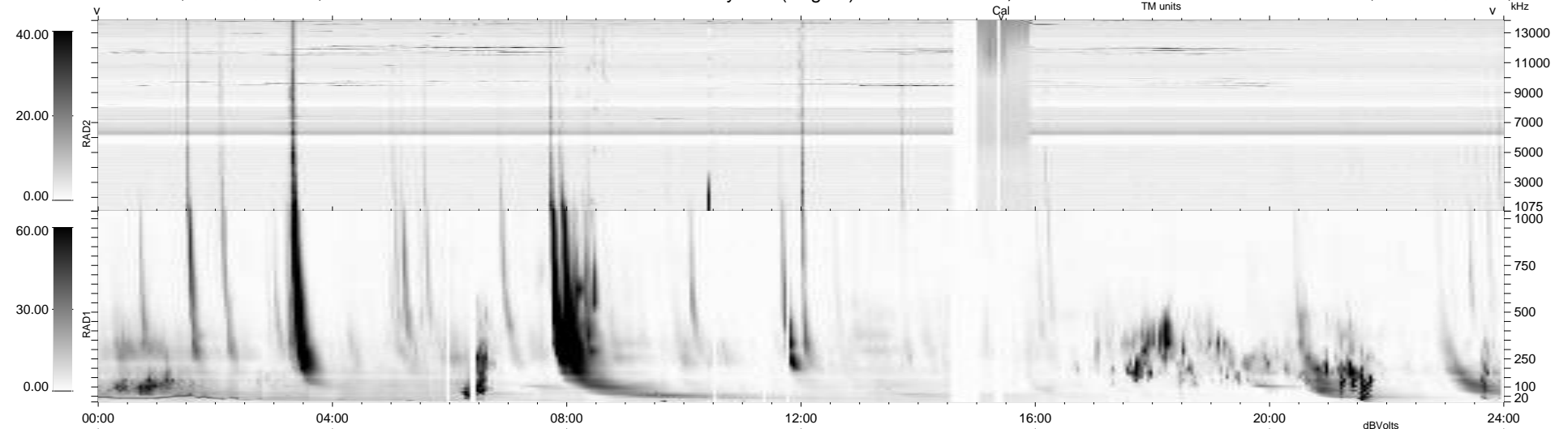
18 bad + 920 good MF/939MF projected (97%) - 1 missing MF  
 Avg interval = 180 secs  
 Re = - 263.10 (260.58, 29.05, 21.79 GSE)

windlib 2.0b

LZ version = v01

### WIND/WAVES Summary Plot (Page 1) for 24-APR-2012, DOY = 115

DAILY 2012-04-26 14:17:07  
 Re = 263.17 (260.96, 25.91, 22.04 GSE)



```

RAD2
Antenna  Ey .....
Mode     LIN(1) .....
SUM/SEP  SEP .....
Toggle   OFF .....

RAD1
Antenna  Ex .....
Mode     LIS(2,4) .....
SUM/SEP  SUM .....
Toggle   OFF .....

TNR
Antenna  ExEy .....
Mode     A-32 .....
Sweep    ACE .....
  
```