

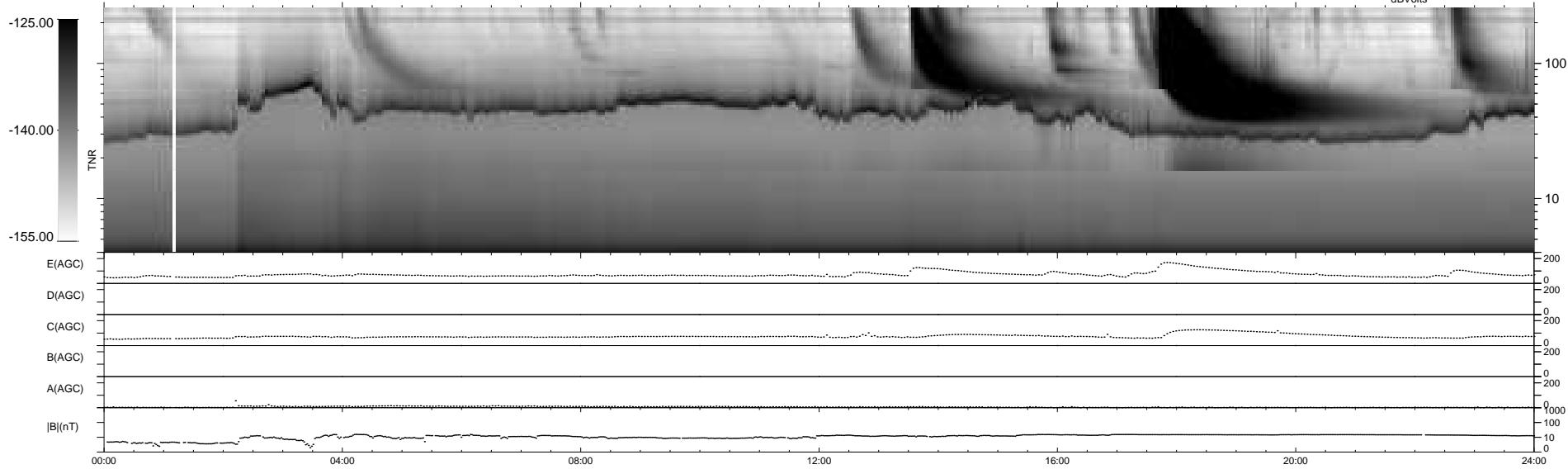
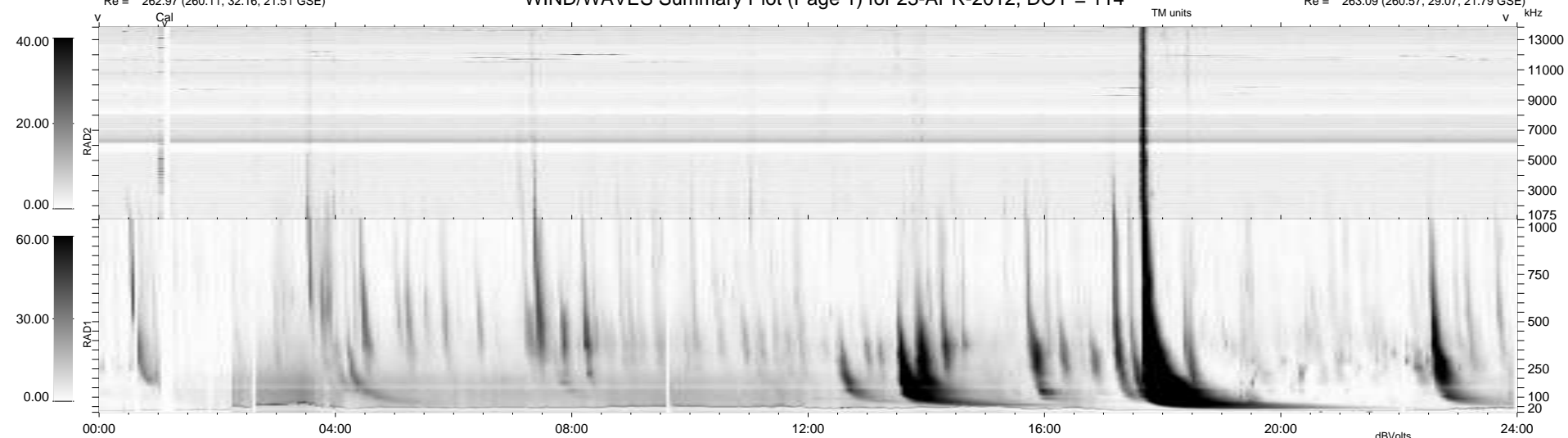
15 bad + 924 good MF/939MF projected (98%) - 0 missing MFs
 Avg interval = 180 secs
 Re = 262.97 (260.11, 32.16, 21.51 GSE)

windlib 2.0b

LZ version = v02

WIND/WAVES Summary Plot (Page 1) for 23-APR-2012, DOY = 114

DAILY 2012-04-26 14:16:11
 Re = 263.09 (260.57, 29.07, 21.79 GSE)



RAD2
 Antenna Ey
 Mode LIN(1)
 SUM/SEP SEP
 Toggle OFF
 RAD1
 Antenna Ex
 Mode LIS(2,4)
 SUM/SEP SUM
 Toggle OFF
 TNR
 Antenna ExEy
 Mode A-32
 Sweep ACE