

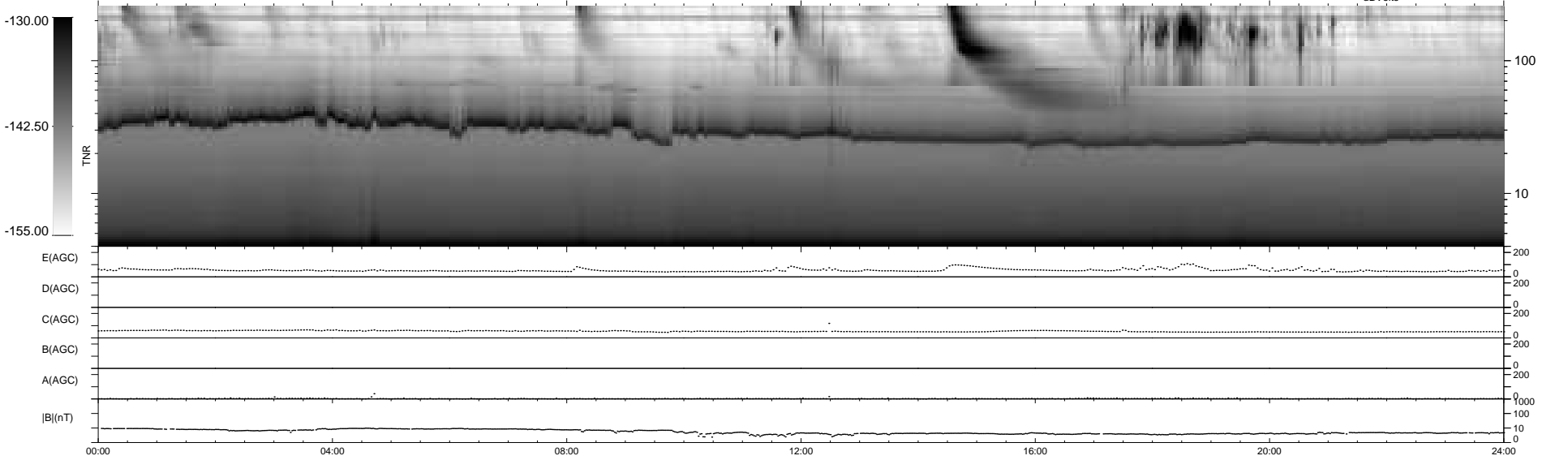
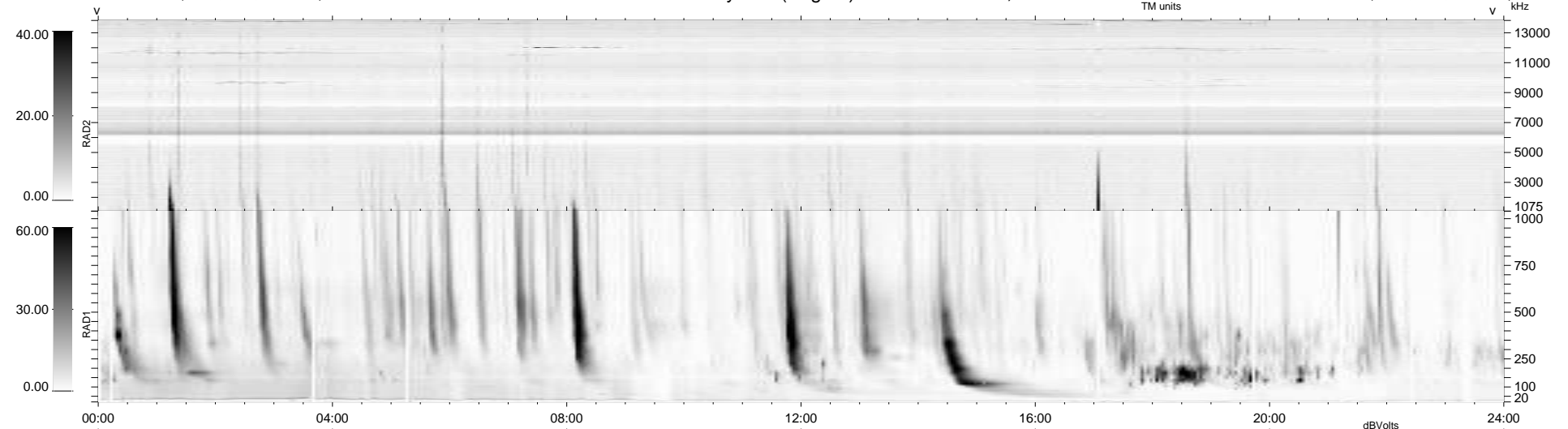
16 bad + 923 good MF/939MF projected (98%) - 0 missing MFs
 Avg interval = 180 secs
 Re = 262.81 (259.57, 35.22, 21.21 GSE)

windlib 2.0b

LZ version = v01

WIND/WAVES Summary Plot (Page 1) for 22-APR-2012, DOY = 113

DAILY 2012-04-23 20:56:06
 Re = 262.97 (260.11, 32.18, 21.51 GSE)



RAD2 Antenna Ey
 Mode LIN(1)
 SUM/SEP SEP
 Toggle OFF
 RAD1 Antenna
 Mode
 SUM/SEP
 Toggle
 TNR Antenna ExEy
 Mode A-32
 Sweep ACE