

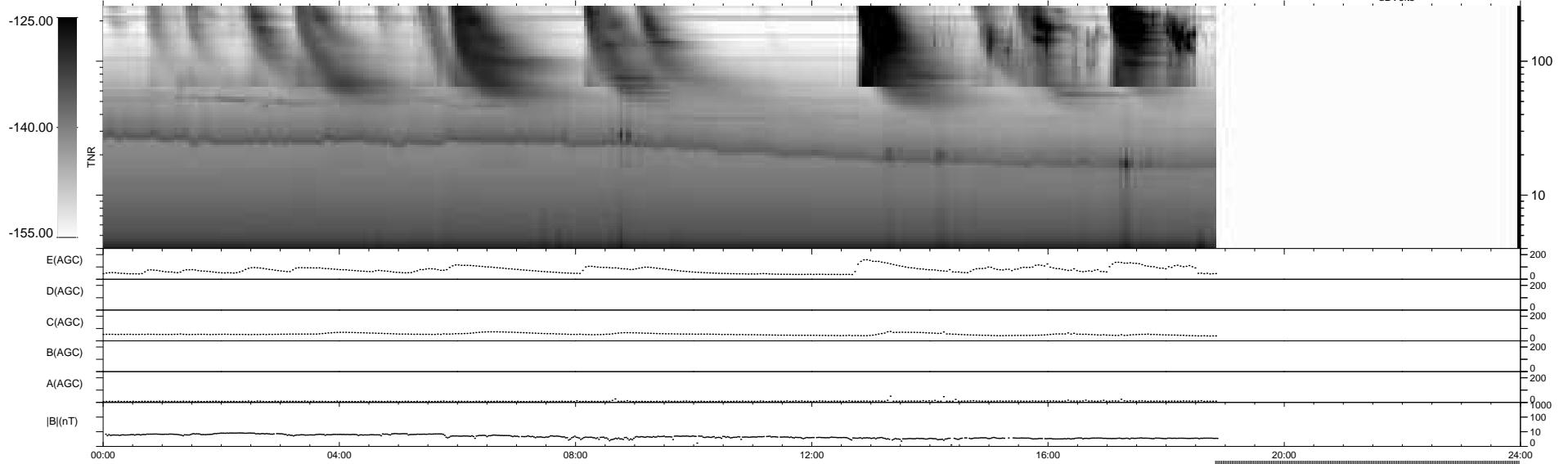
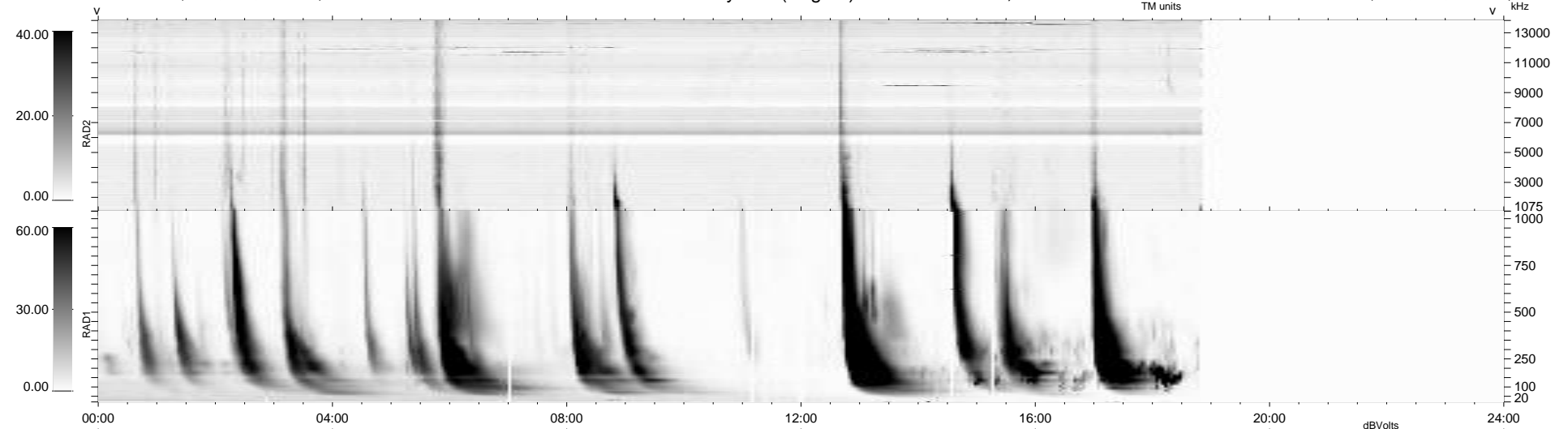
17 bad + 720 good MF/939MF projected (76%) - 202 missing MFs
 Avg interval = 180 secs
 Re = -261.68 (256.65, 47.05, 19.80 GSE)

windlib 2.0b

LZ version = v01

WIND/WAVES Summary Plot (Page 1) for 18-APR-2012, DOY = 109

DAILY 2012-04-19 20:56:08
 Re = 262.02 (257.48, 44.17, 20.19 GSE)



```

RAD2
Antenna Ey .....
Mode LIN(1) .....
SUM/SEP SEP .....
Toggle OFF .....

RAD1
Antenna Ex .....
Mode LIS(2,4) .....
SUM/SEP SUM .....
Toggle OFF .....

TNR
Antenna ExEy .....
Mode A-32 .....
Sweep ACE .....
  
```