

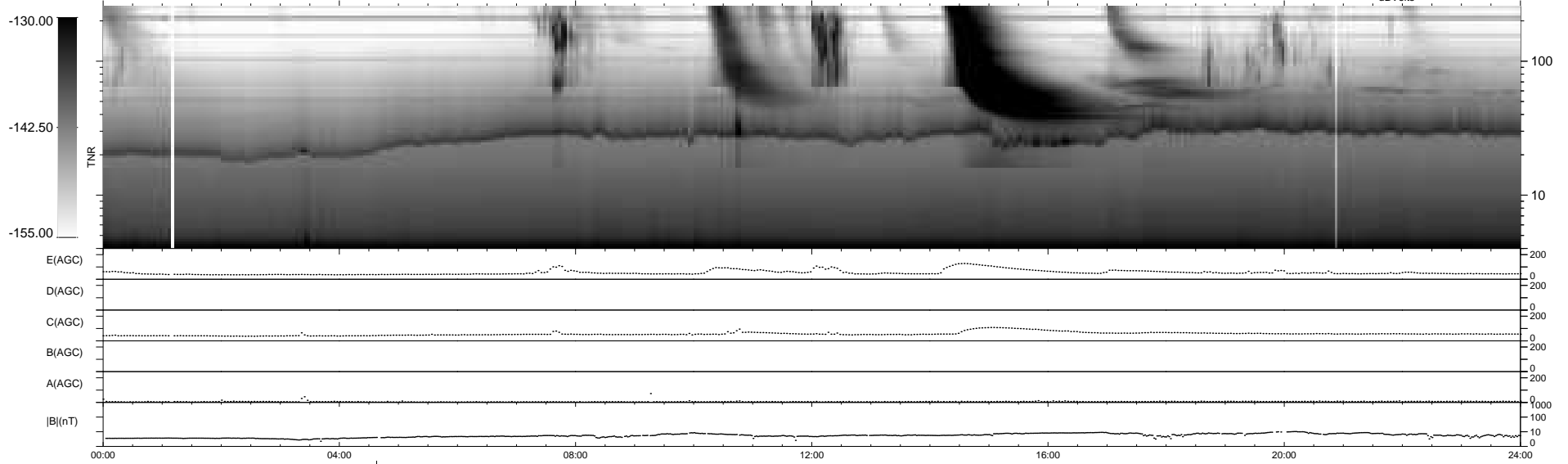
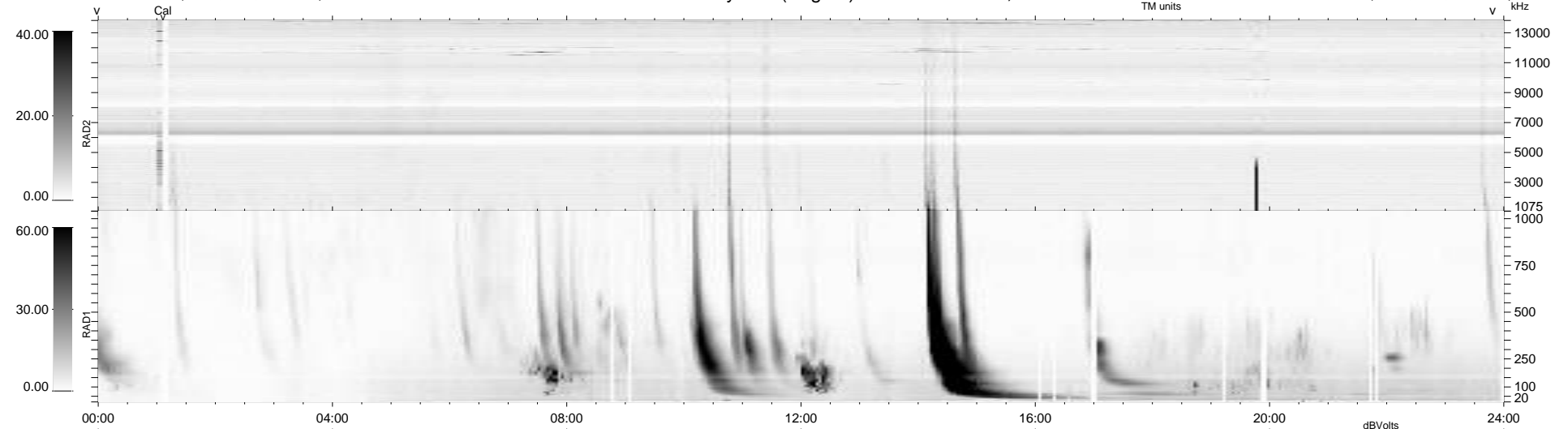
32 bad + 906 good MF/939MF projected (96%) - 1 missing MF
 Avg interval = 180 secs
 Re = 261.29 (255.74, 49.90, 19.40 GSE)

windlib 2.0b

LZ version = v01

WIND/WAVES Summary Plot (Page 1) for 17-APR-2012, DOY = 108

DAILY 2012-04-18 20:56:10
 Re = 261.67 (256.64, 47.07, 19.80 GSE)



RAD2
 Antenna Ey
 Mode LIN(1)
 SUM/SEP SEP
 Toggle OFF
 RAD1
 Antenna Ex
 Mode LIS(2,4)
 SUM/SEP SUM
 Toggle OFF
 TNR
 Antenna ExEy
 Mode A-32
 Sweep ACE