

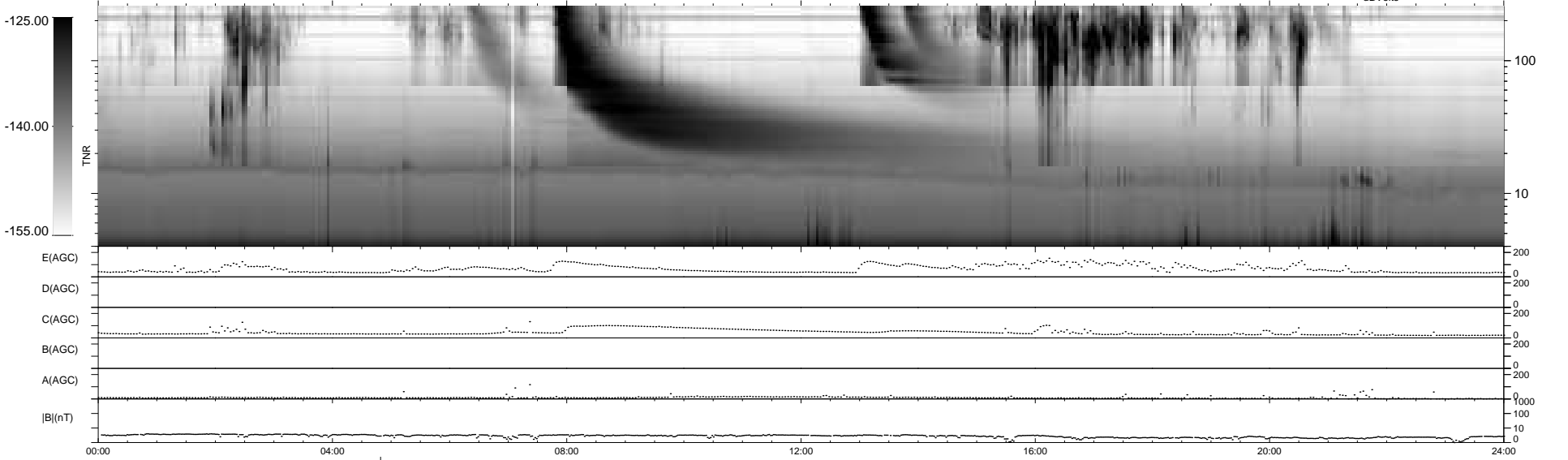
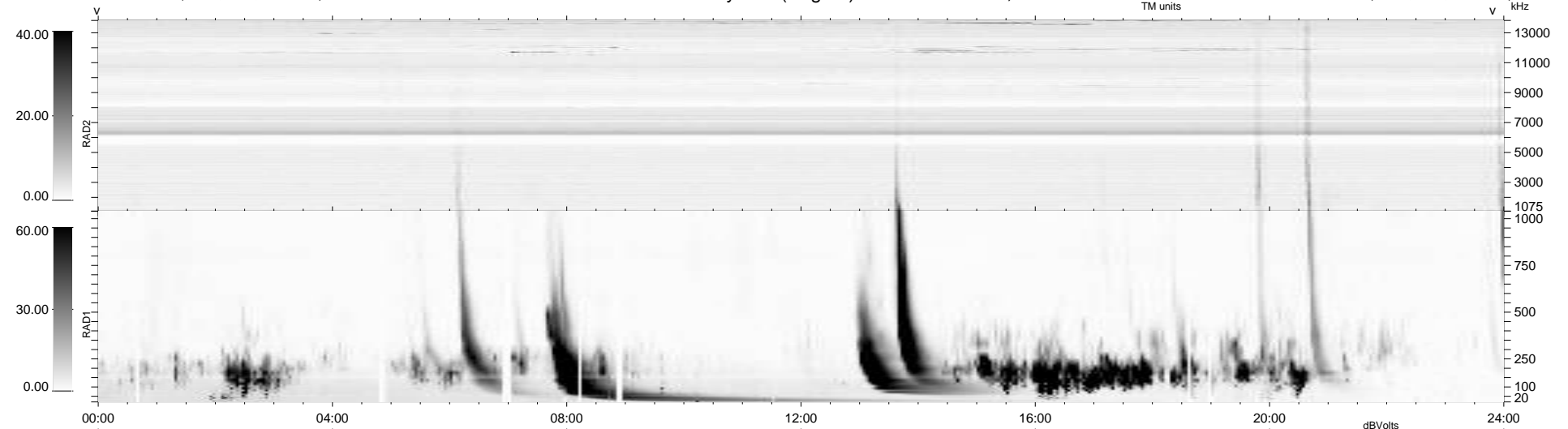
24 bad + 914 good MF/939MF projected (97%) - 1 missing MF
 Avg interval = 180 secs
 Re = -259.93 (252.68, 58.25, 18.05 GSE)

windlib 2.0b

LZ version = v01

WIND/WAVES Summary Plot (Page 1) for 14-APR-2012, DOY = 105

DAILY 2012-04-15 18:25:07
 Re = 260.41 (253.74, 55.52, 18.51 GSE)



E(AGC)
 D(AGC)
 C(AGC)
 B(AGC)
 A(AGC)
 |B|(nT)
 00:00 04:00 08:00 12:00 16:00 20:00 24:00

RAD2
 Antenna Ey
 Mode LIN(1)
 SUM/SEP SEP
 Toggle OFF
RAD1
 Antenna Ex
 Mode LIS(2,4)
 SUM/SEP SUM
 Toggle OFF
TNR
 Antenna ExEy
 Mode A-32
 Sweep ACE