

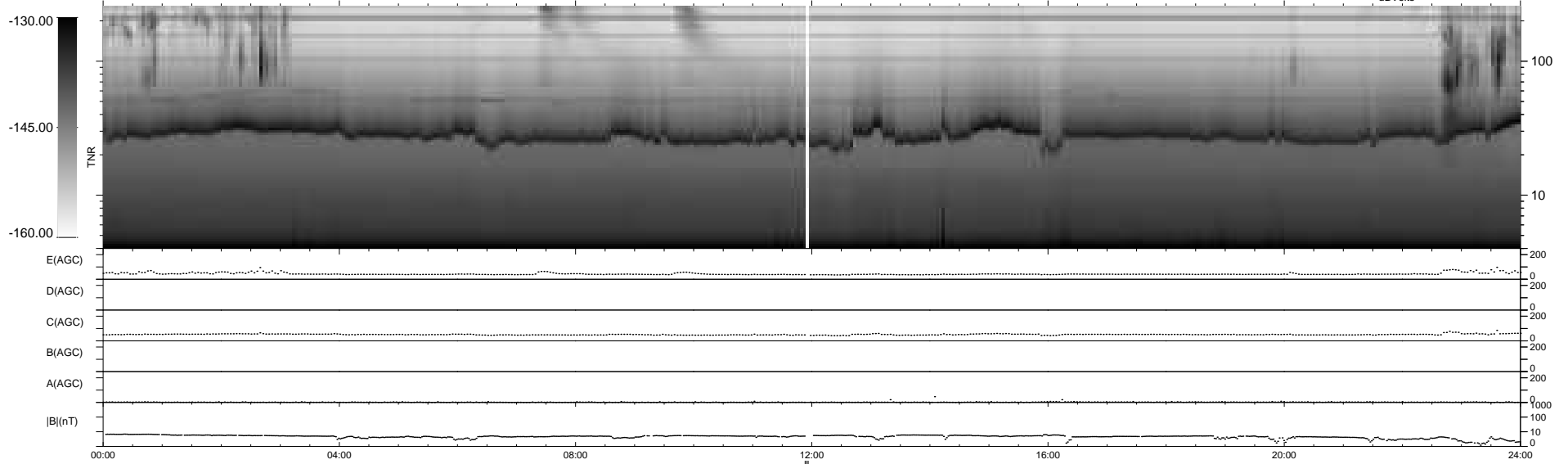
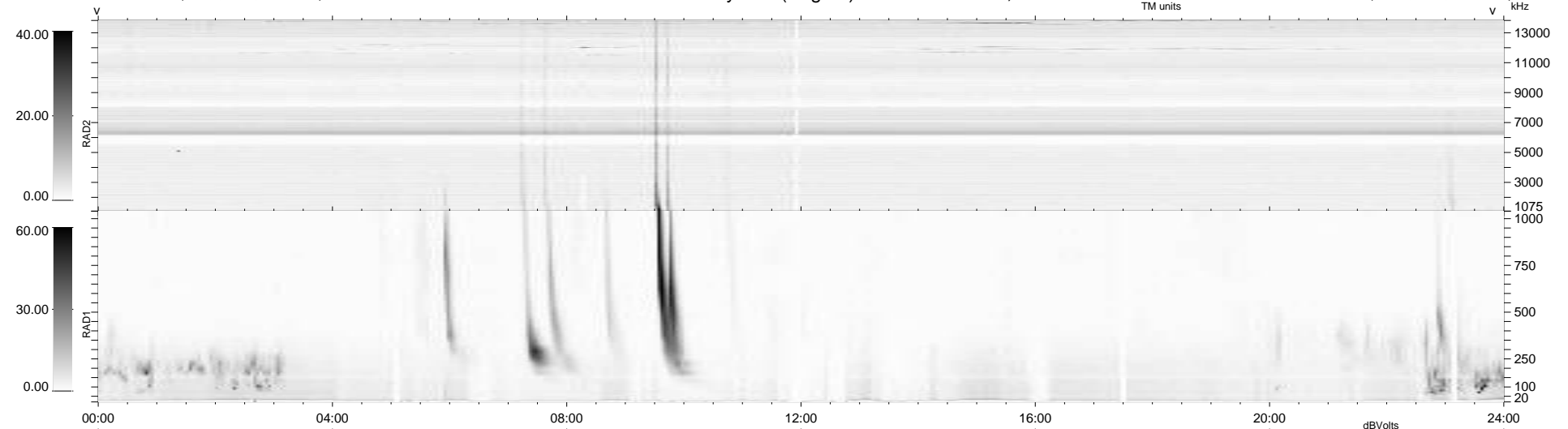
28 bad + 908 good MF/939MF projected (96%) - 3 missing MFs
 Avg interval = 180 secs
 Re = 257.94 (248.07, 68.86, 15.97 GSE)

windlib 2.0b

LZ version = v01

WIND/WAVES Summary Plot (Page 1) for 10-APR-2012, DOY = 101

DAILY 2012-04-11 19:43:07
 Re = 258.43 (249.24, 66.29, 16.51 GSE)



RAD2
 Antenna Ey
 Mode LIN(1)
 SUM/SEP SEP
 Toggle OFF

RAD1
 Antenna Ex
 Mode LIS(2,4)
 SUM/SEP SUM
 Toggle OFF

TNR
 Antenna ExEy
 Mode A-32
 Sweep ACE