

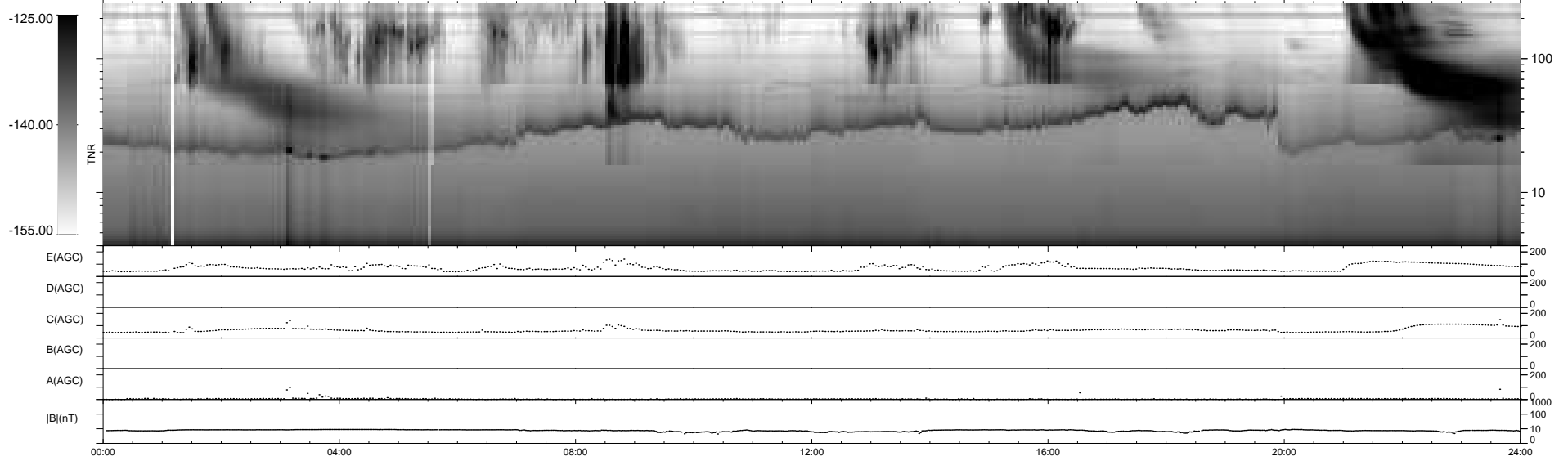
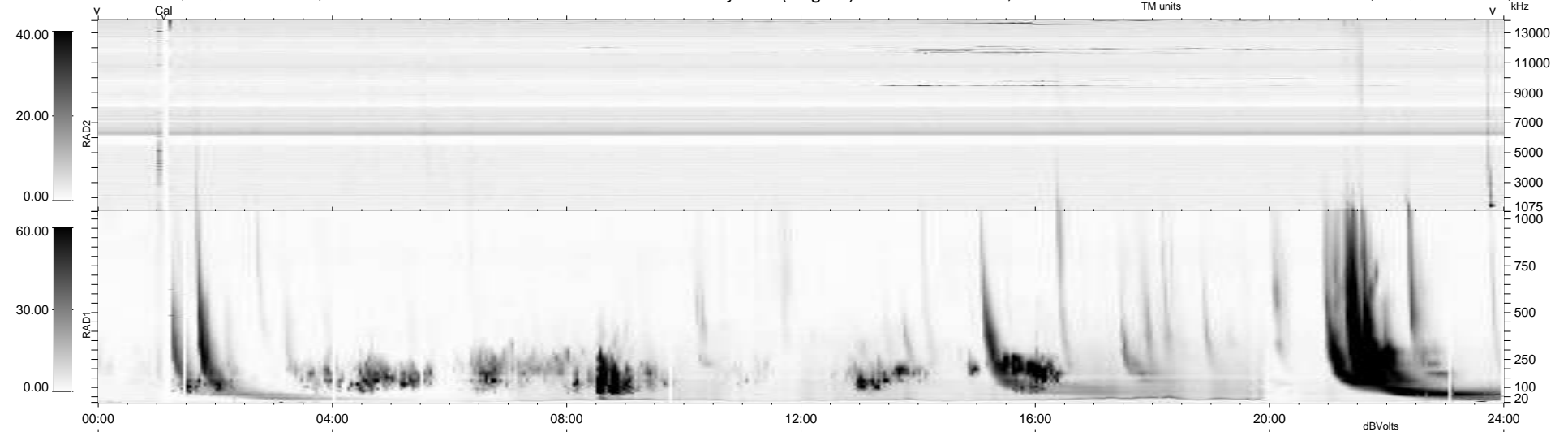
14 bad + 925 good MF/939MF projected (98%) - 0 missing MFs  
 Avg interval = 180 secs  
 Re = 255.67 (242.24, 80.74, 13.04 GSE)

windlib 2.0b

LZ version = v02

### WIND/WAVES Summary Plot (Page 1) for 05-APR-2012, DOY = 96

DAILY 2012-04-09 15:43:07  
 Re = 256.10 (243.37, 78.56, 13.64 GSE)



RAD2  
 Antenna Ey .....  
 Mode LIN(1) .....  
 SUM/SEP SEP .....  
 Toggle OFF .....  
 RAD1  
 Antenna Ex .....  
 Mode LIS(2,4) .....  
 SUM/SEP SUM .....  
 Toggle OFF .....  
 TNR  
 Antenna ExEy .....  
 Mode A-32 .....  
 Sweep ACE .....