

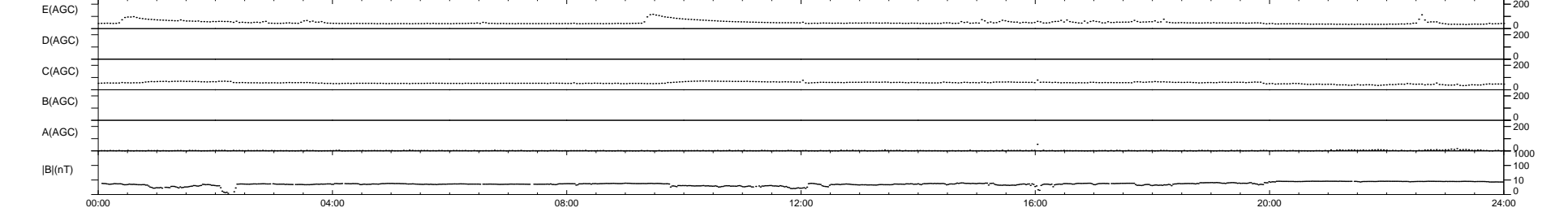
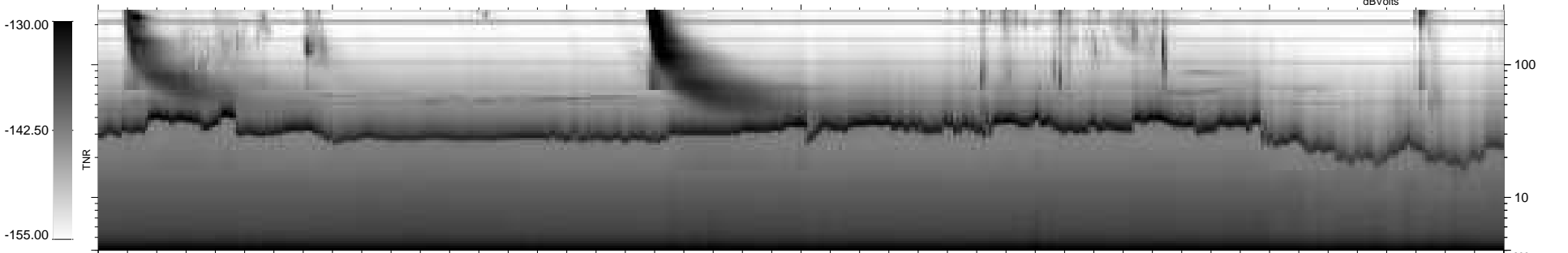
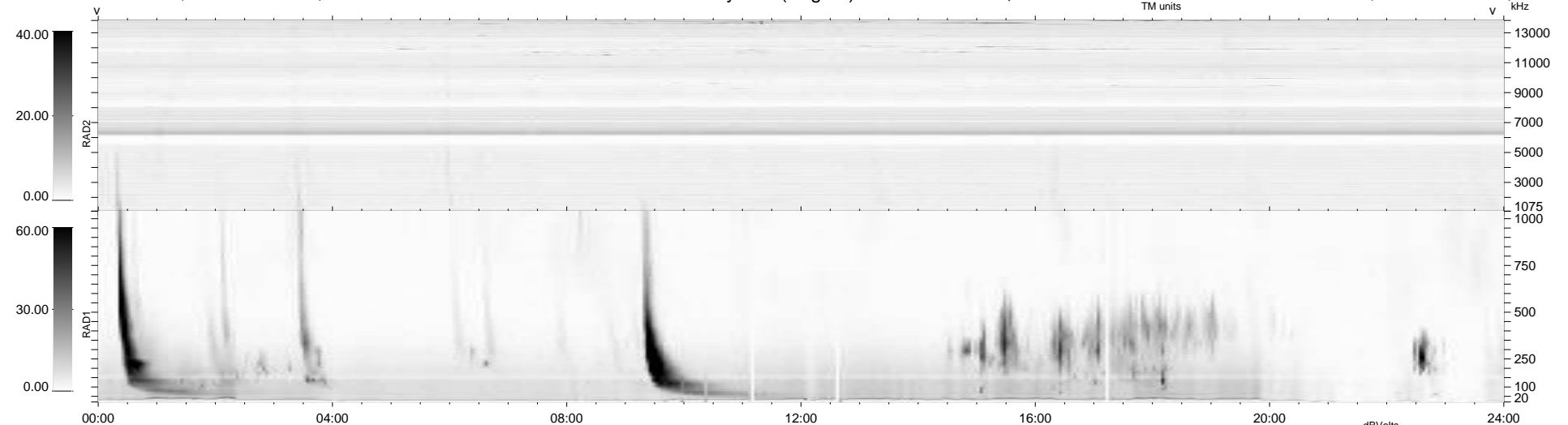
22 bad + 917 good MF/939MF projected (97%) - 0 missing MFs  
 Avg interval = 180 secs  
 Re = 255.24 (241.11, 82.83, 12.42 GSE)

windlib 2.0b

LZ version = v01

### WIND/WAVES Summary Plot (Page 1) for 04-APR-2012, DOY = 95

DAILY 2012-04-06 14:43:08  
 Re = 255.67 (242.23, 80.76, 13.03 GSE)



RAD2  
 Antenna Ey  
 Mode LIN(1)  
 SUM/SEP SEP  
 Toggle OFF

RAD1  
 Antenna Ex  
 Mode LIS(2,4)  
 SUM/SEP SUM  
 Toggle OFF

TNR  
 Antenna ExEy  
 Mode A-32  
 Sweep ACE