

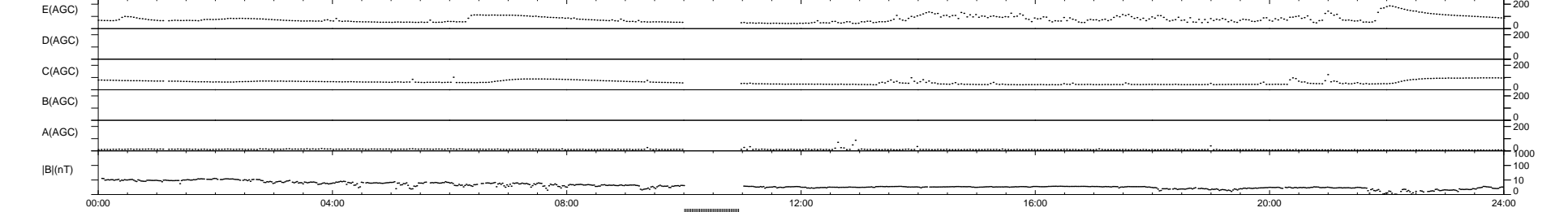
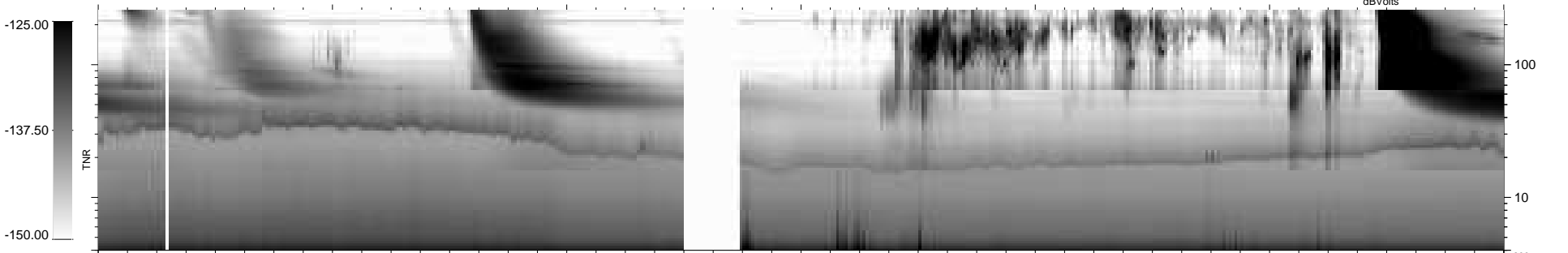
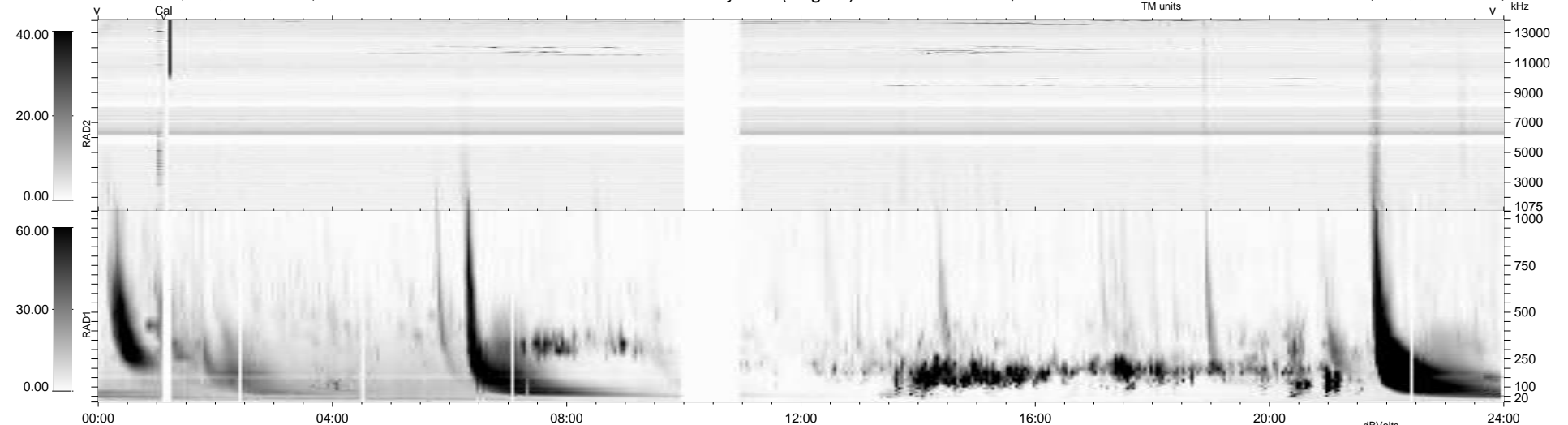
22 bad + 880 good MF/939MF projected (93%) - 37 missing MFs  
 Avg interval = 180 secs  
 Re = 251.53 (233.24, 93.83, 7.85 GSE)

windlib 2.0b

LZ version = v01

### WIND/WAVES Summary Plot (Page 1) for 28-MAR-2012, DOY = 88

DAILY 2012-03-29 12:43:07  
 Re = 252.18 (234.38, 92.67, 8.52 GSE)



RAD2  
 Antenna Ey .....  
 Mode LIN(1) .....  
 SUM/SEP SEP .....  
 Toggle OFF .....  
 RAD1  
 Antenna Ex .....  
 Mode LIS(2/4) .....  
 SUM/SEP SUM .....  
 Toggle OFF .....  
 TNR  
 Antenna ExEy .....  
 Mode A-32 .....  
 Sweep ACE .....