

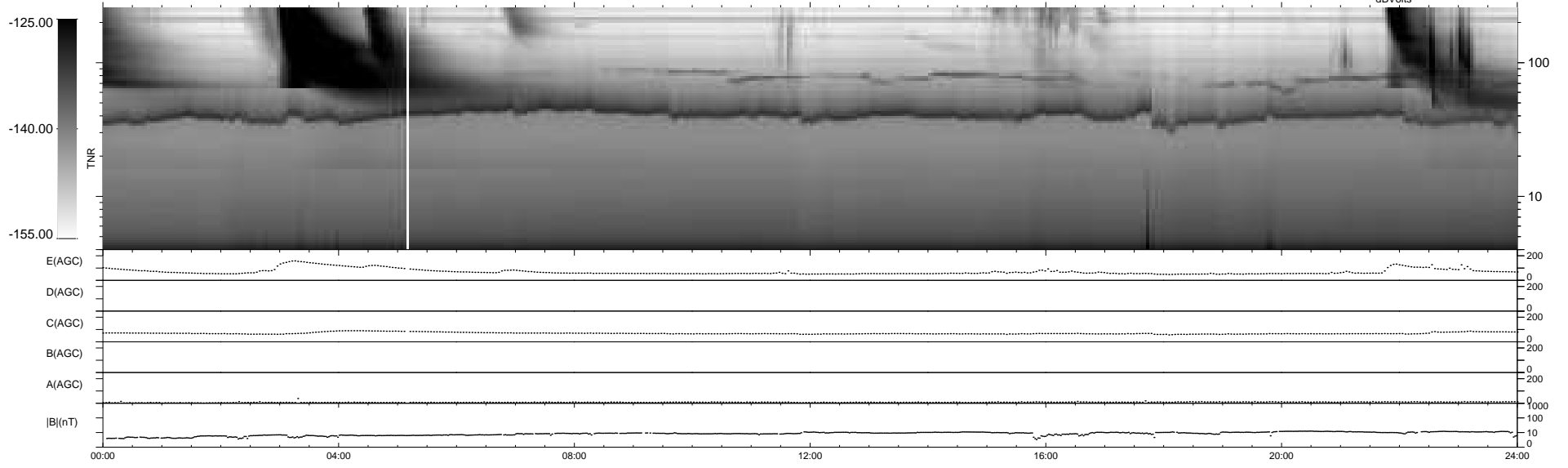
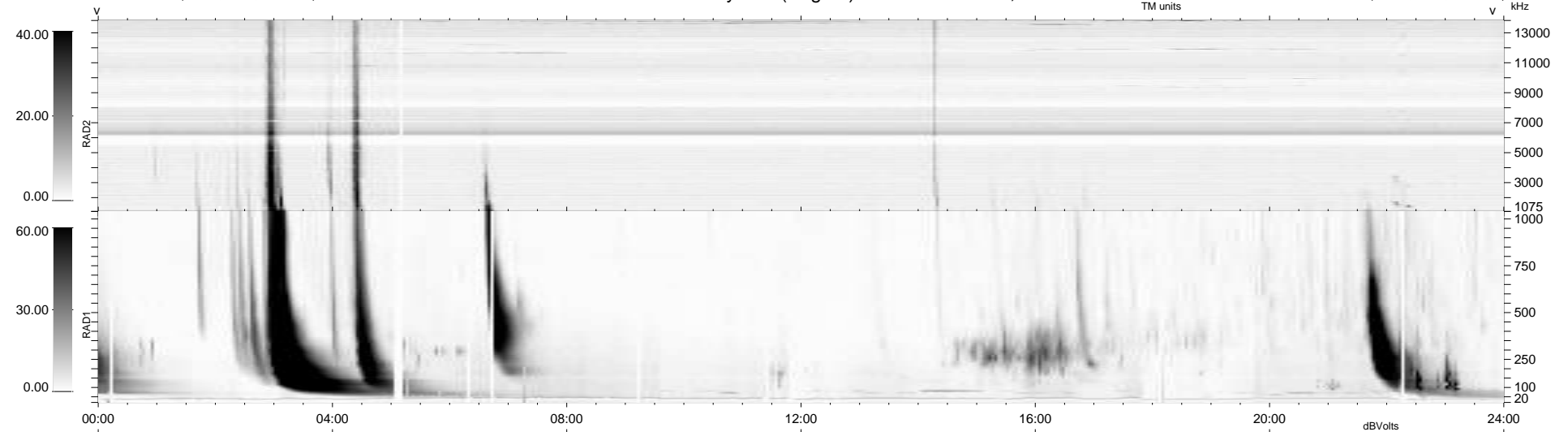
30 bad + 909 good MF/939MF projected (96%) - 0 missing MFs
 Avg interval = 180 secs
 Re = 250.81 (232.07, 94.85, 7.16 GSE)

windlib 2.0b

LZ version = v01

WIND/WAVES Summary Plot (Page 1) for 27-MAR-2012, DOY = 87

DAILY 2012-03-28 12:43:07
 Re = 251.52 (233.23, 93.83, 7.84 GSE)



RAD2
 Antenna Ey
 Mode LIN(1)
 SUM/SEP SEP
 Toggle OFF
 RAD1
 Antenna Ex
 Mode LIS(2,4)
 SUM/SEP SUM
 Toggle OFF
 TNR
 Antenna ExEy
 Mode A-32
 Sweep ACE