

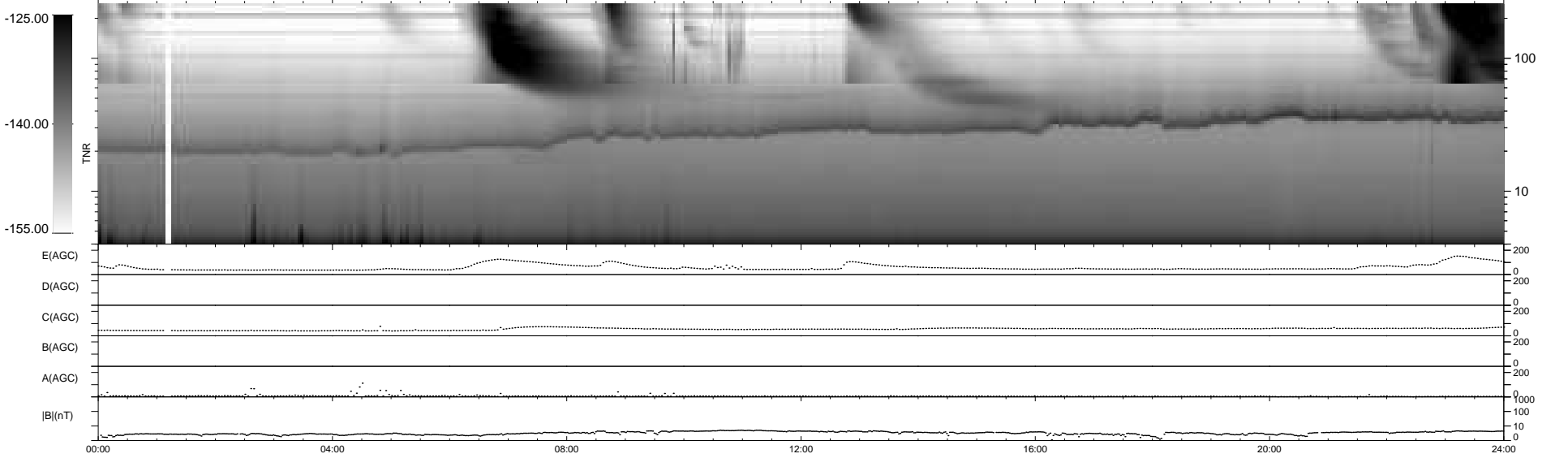
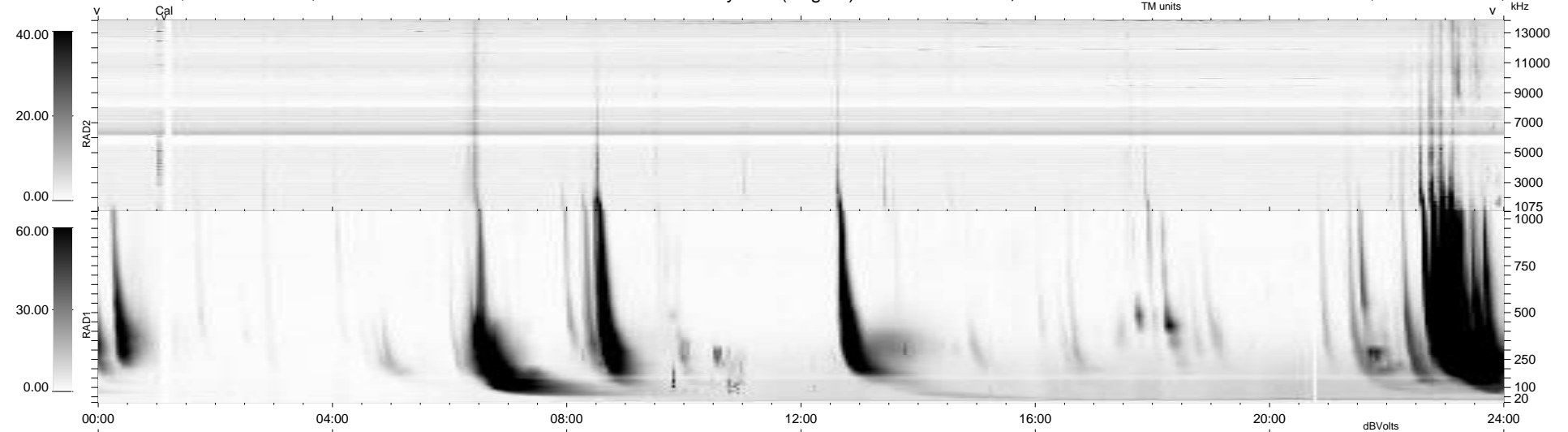
6 bad + 934 good MF/940MF projected (99%) - 0 missing MFs
 Avg interval = 180 secs
 Re = 250.03 (230.88, 95.74, 6.47 GSE)

windlib 2.0b

LZ version = v01

WIND/WAVES Summary Plot (Page 1) for 26-MAR-2012, DOY = 86

DAILY 2012-03-27 16:43:08
 Re = 250.80 (232.06, 94.86, 7.16 GSE)



RAD2
 Antenna Ey
 Mode LIN(1)
 SUM/SEP SEP
 Toggle OFF
 RAD1
 Antenna Ex
 Mode LIS(2,4)
 SUM/SEP SUM
 Toggle OFF
 TNR
 Antenna ExEy
 Mode A-32
 Sweep ACE