

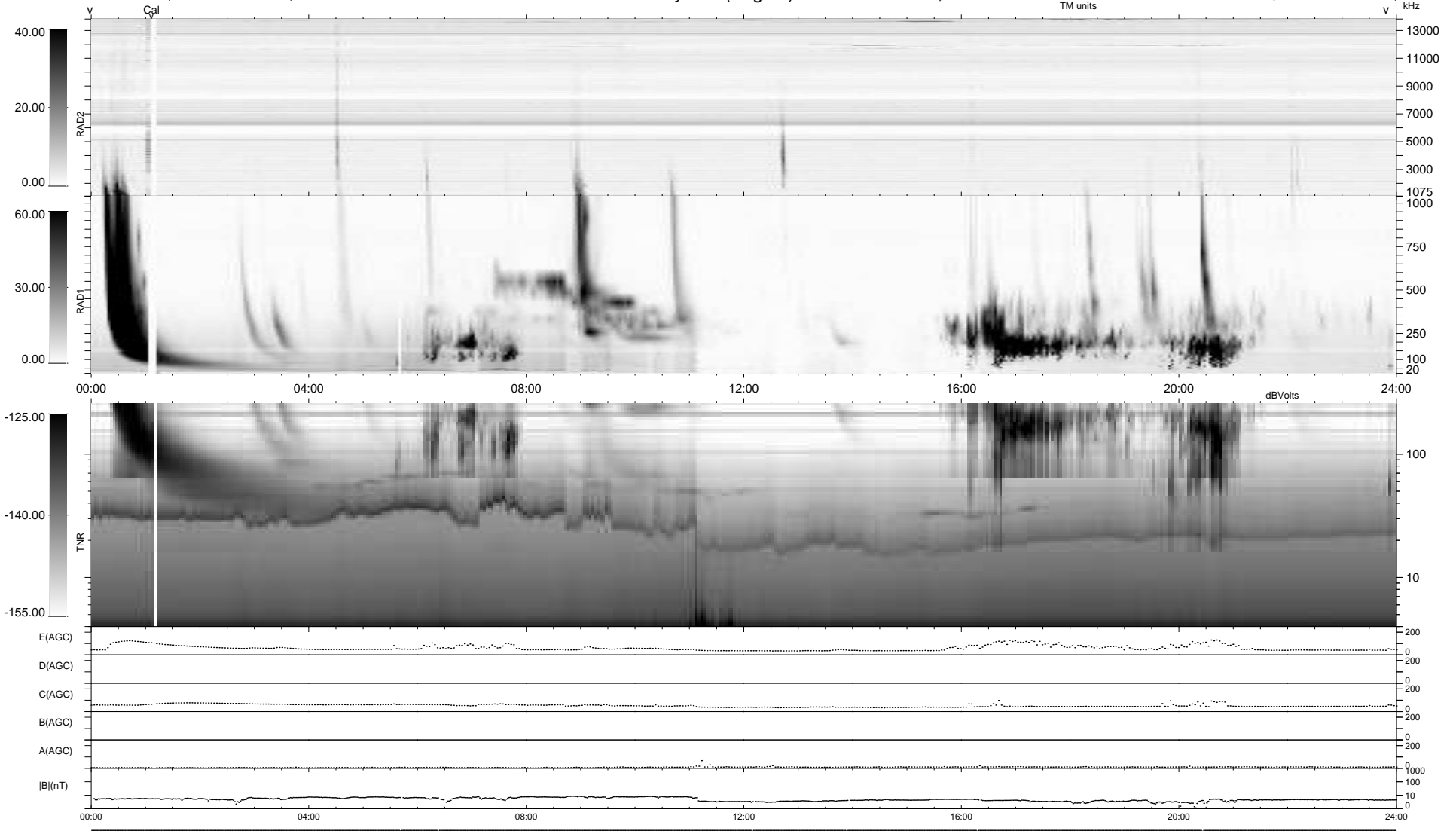
6 bad + 933 good MF/939MF projected (99%) - 0 missing MFs  
 Avg interval = 180 secs  
 Re = 248.28 (228.44, 97.13, 5.06 GSE)

windlib 2.0b

LZ version = v02

### WIND/WAVES Summary Plot (Page 1) for 24-MAR-2012, DOY = 84

DAILY 2012-03-26 11:44:04  
 Re = 249.18 (229.66, 96.50, 5.76 GSE)



RAD2  
 Antenna Ey .....  
 Mode LIN(1) .....  
 SUM/SEP SEP .....  
 Toggle OFF .....  
 RAD1  
 Antenna Ex .....  
 Mode LIS(2,4) .....  
 SUM/SEP SUM .....  
 Toggle OFF .....  
 TNR  
 Antenna ExEy .....  
 Mode A-32 .....  
 Sweep ACE .....