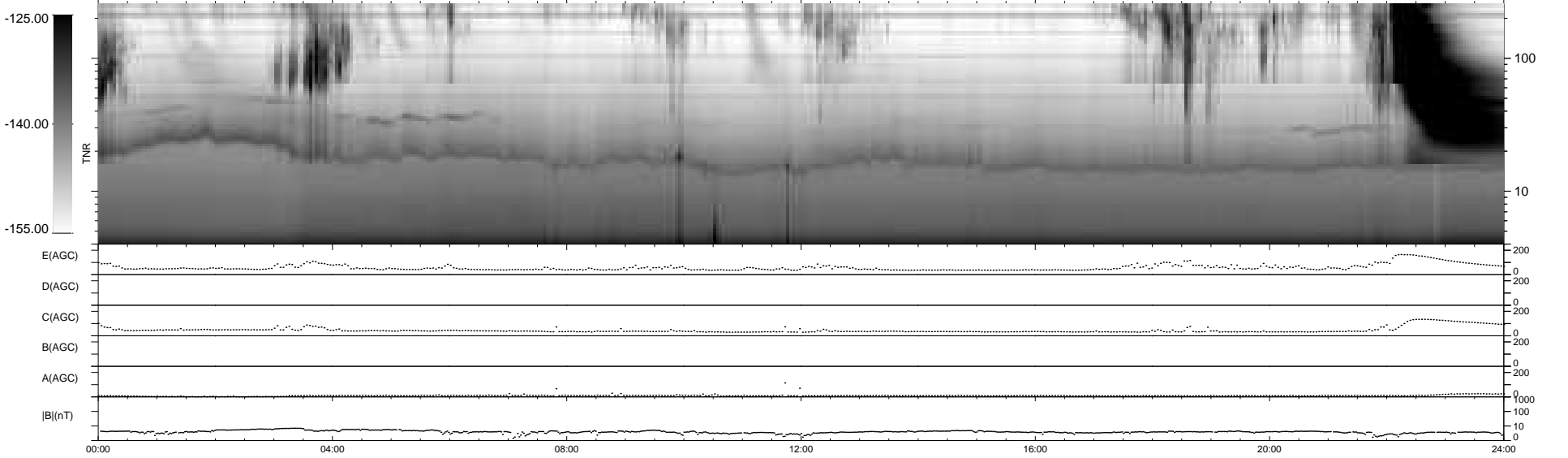
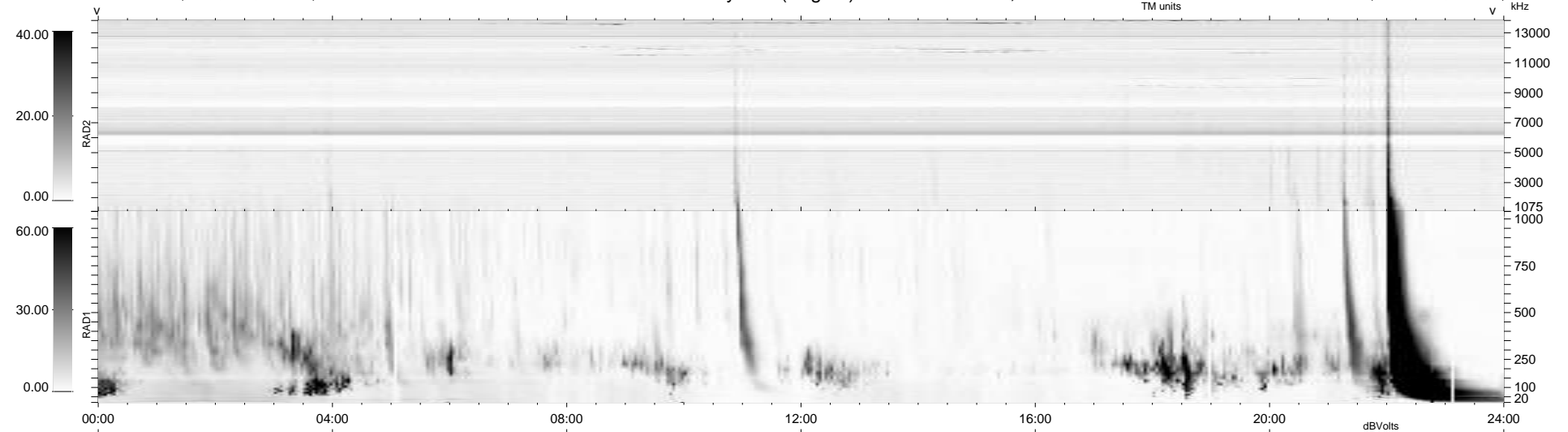


8 bad + 932 good MF/940MF projected (99%) - 0 missing MFs  
 Avg interval = 180 secs  
 Re = -242.84 (221.96, 98.49, 1.42 GSE)

windlib 2.0b LZ version = v01  
 DAILY 2012-03-20 21:43:09  
 Re = 244.03 (223.28, 98.44, 2.23 GSE)

### WIND/WAVES Summary Plot (Page 1) for 19-MAR-2012, DOY = 79



RAD2  
 Antenna Ey  
 Mode LIN(1)  
 SUM/SEP SEP  
 Toggle OFF

RAD1  
 Antenna Ex  
 Mode LIS(2,4)  
 SUM/SEP SUM  
 Toggle OFF

TNR  
 Antenna ExEy  
 Mode A-32  
 Sweep ACE