

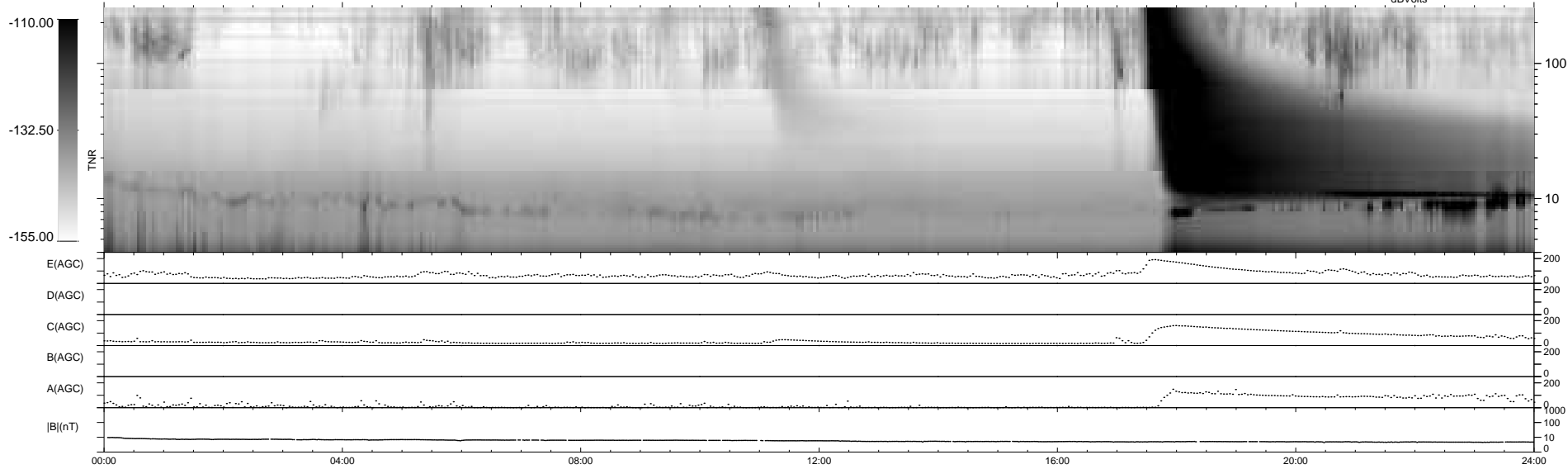
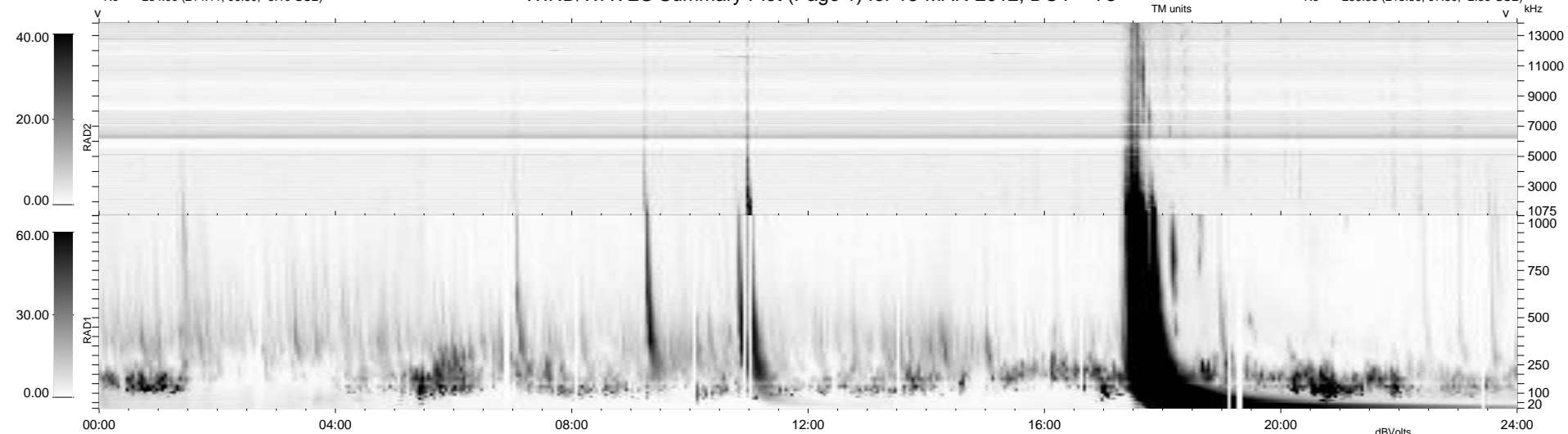
22 bad + 917 good MF/939MF projected (97%) - 0 missing MFs
 Avg interval = 180 secs
 Re = -234.99 (214.11, 96.80, -3.10 GSE)

windlib 2.0b

LZ version = v01

WIND/WAVES Summary Plot (Page 1) for 13-MAR-2012, DOY = 73

DAILY 2012-03-14 10:43:06
 Re = 236.33 (215.36, 97.30, -2.36 GSE)



RAD2
 Antenna Ey
 Mode LIN(1)
 SUM/SEP SEP
 Toggle OFF

RAD1
 Antenna Ex
 Mode LIS(2,4)
 SUM/SEP SUM
 Toggle OFF

TNR
 Antenna ExEy
 Mode A-32
 Sweep ACE