

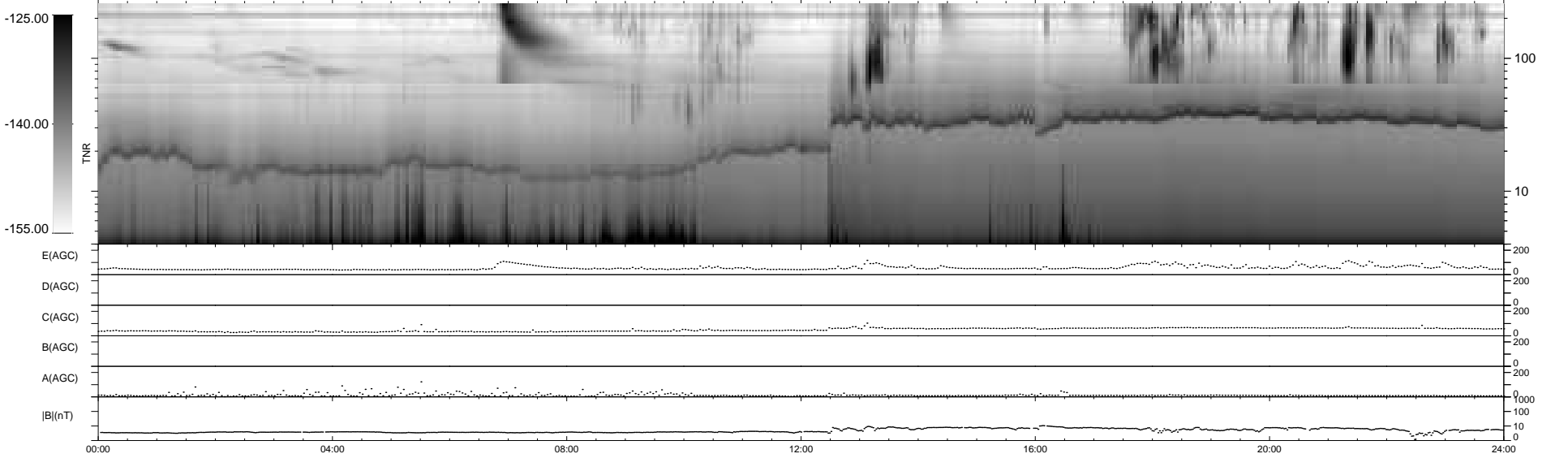
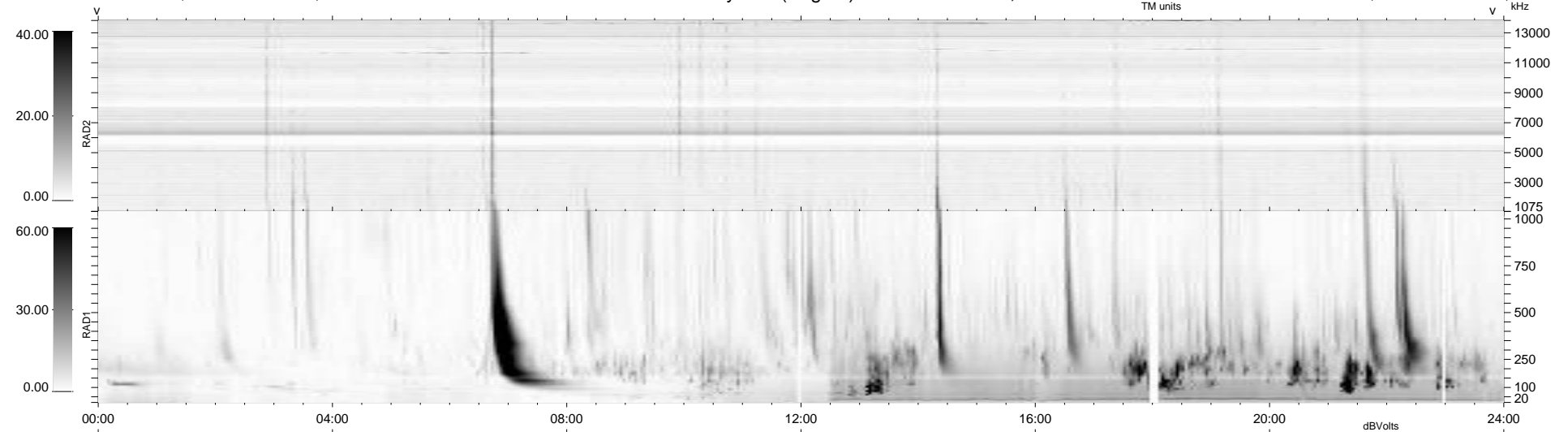
16 bad + 924 good MF/940MF projected (98%) - 0 missing MFs
 Avg interval = 180 secs
 Re = -232.32 (211.73, 95.52, -4.59 GSE)

windlib 2.0b

LZ version = v01

WIND/WAVES Summary Plot (Page 1) for 11-MAR-2012, DOY = 71

DAILY 2012-03-12 21:43:08
 Re = 233.64 (212.89, 96.20, -3.85 GSE)



RAD2
 Antenna Ey
 Mode LIN(1)
 SUM/SEP SEP
 Toggle OFF
 RAD1
 Antenna Ex
 Mode LIS(2,4)
 SUM/SEP SUM
 Toggle OFF
 TNR
 Antenna ExEy
 Mode A-32
 Sweep ACE