

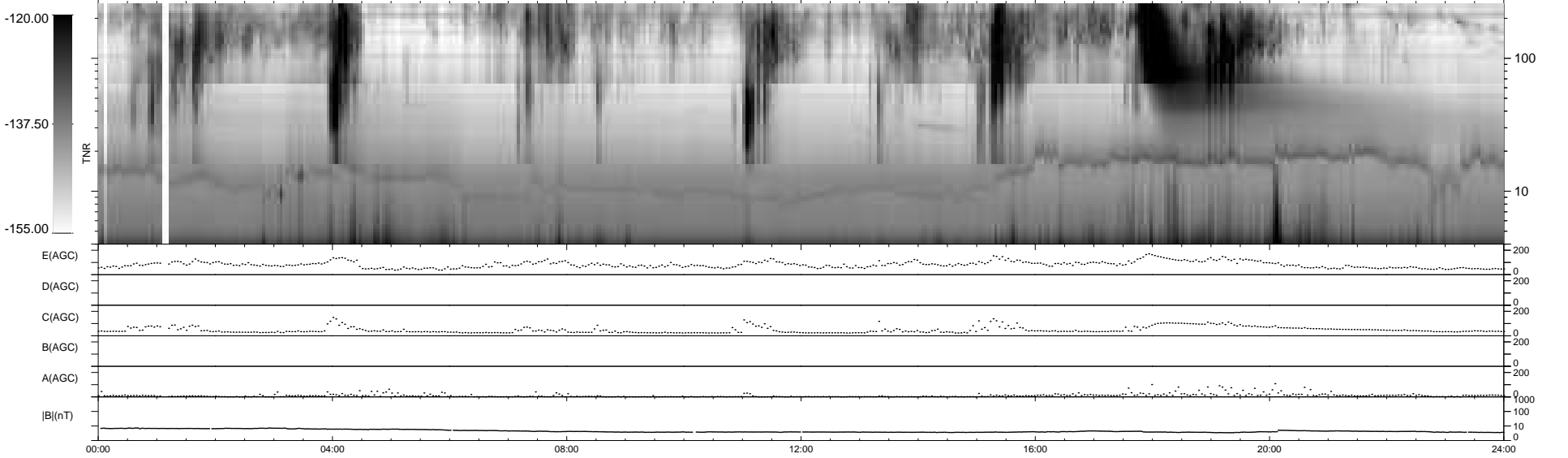
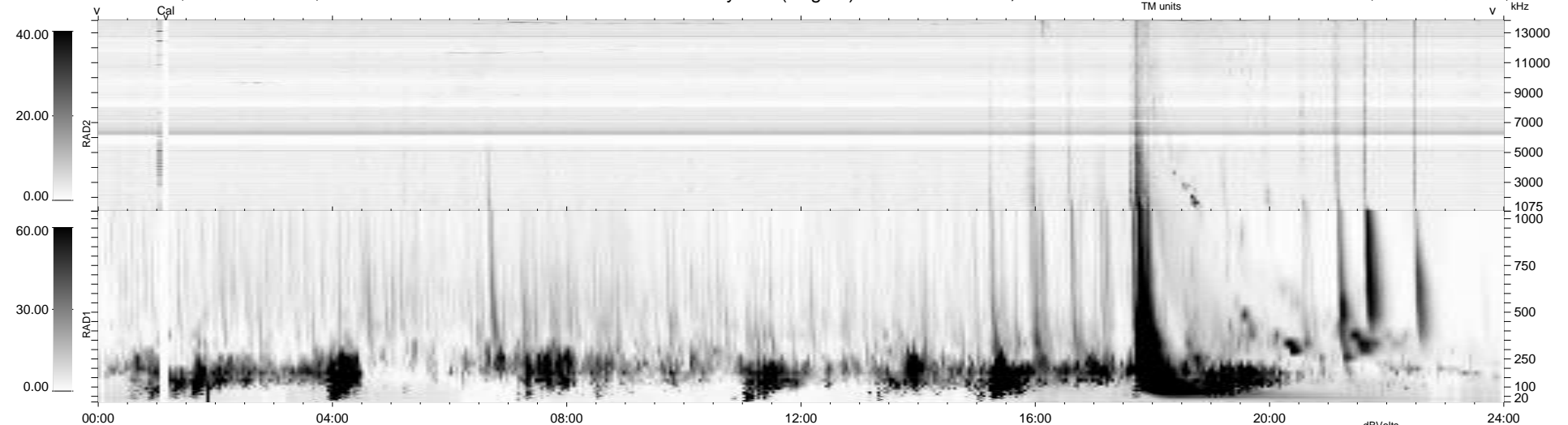
13 bad + 926 good MF/939MF projected (98%) - 0 missing MFs  
 Avg interval = 180 secs  
 Re = -231.01 (210.63, 94.72, -5.32 GSE)

windlib 2.0b

LZ version = v01

### WIND/WAVES Summary Plot (Page 1) for 10-MAR-2012, DOY = 70

DAILY 2012-03-11 10:43:07  
 Re = 232.31 (211.72, 95.51, -4.59 GSE)



E(AGC) ..... 200  
 D(AGC) ..... 200  
 C(AGC) ..... 200  
 B(AGC) ..... 200  
 A(AGC) ..... 200  
 |B|(nT) ..... 1000  
 ..... 100  
 ..... 10  
 ..... 0

RAD2  
 Antenna Ey .....  
 Mode LIN(1) .....  
 SUM/SEP SEP .....  
 Toggle OFF .....  
 RAD1  
 Antenna Ex .....  
 Mode LIS(2,4) .....  
 SUM/SEP SUM .....  
 Toggle OFF .....  
 TNR  
 Antenna ExEy .....  
 Mode A-32 .....  
 Sweep ACE .....