

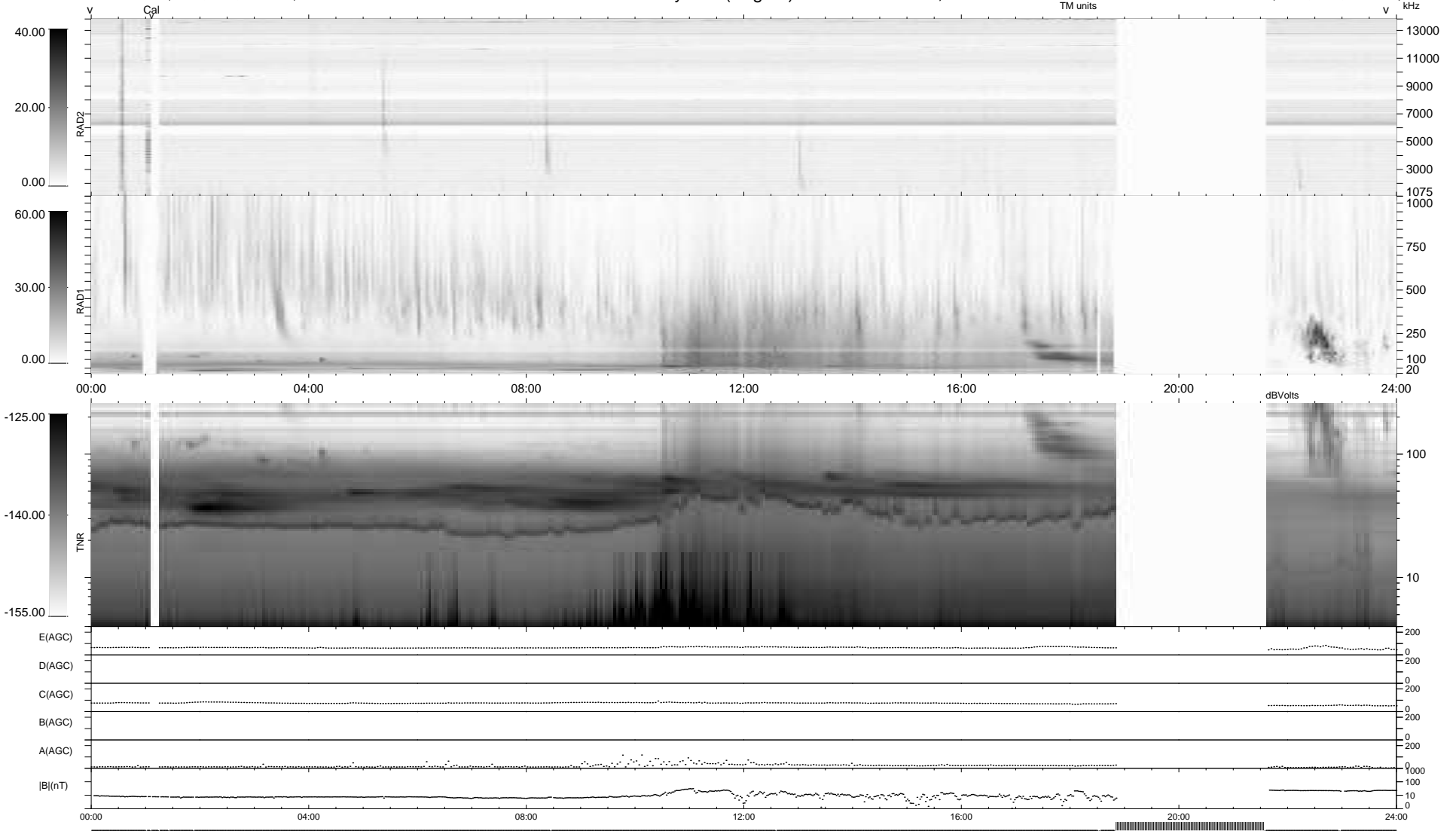
13 bad + 819 good MF/939MF projected (87%) - 107 missing MFs  
 Avg interval = 180 secs  
 Re = 228.42 (208.61, 92.81, -6.75 GSE)

windlib 2.0b

LZ version = v01

### WIND/WAVES Summary Plot (Page 1) for 08-MAR-2012, DOY = 68

DAILY 2012-03-10 04:43:08  
 Re = 229.70 (209.58, 93.82, -6.05 GSE)



RAD2  
 Antenna Ey .....  
 Mode LIN(1) .....  
 SUM/SEP SEP .....  
 Toggle OFF .....  
 RAD1  
 Antenna Ex .....  
 Mode LIS(2,4) .....  
 SUM/SEP SUM .....  
 Toggle OFF .....  
 TNR  
 Antenna ExEy .....  
 Mode A-32 .....  
 Sweep ACE .....