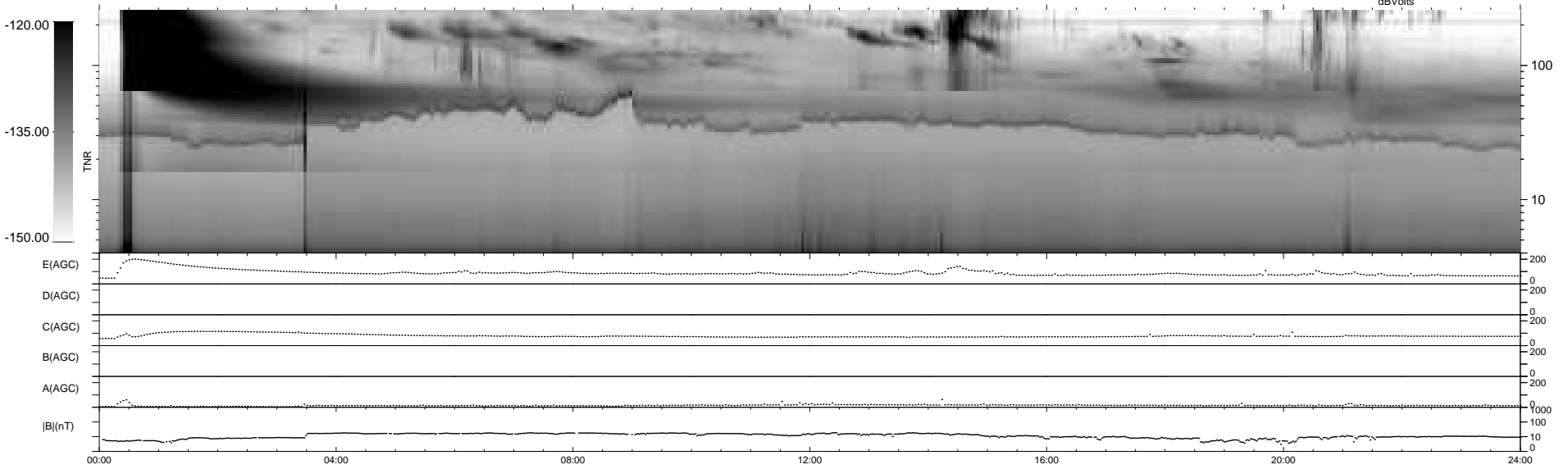
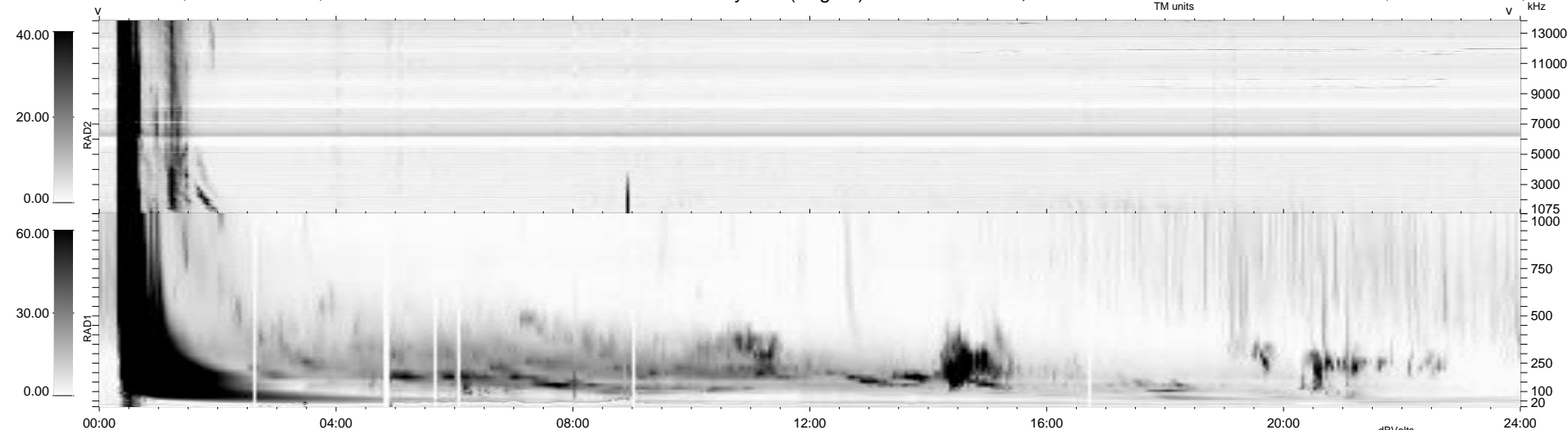


17 bad + 922 good MF/939MF projected (98%) - 0 missing MFs
 Avg interval = 180 secs
 Re = -227.16 (207.71, 91.66, -7.45 GSE)

windlib 2.0b LZ version = v01
 DAILY 2012-03-08 05:43:08
 Re = 228.42 (208.61, 92.80, -6.76 GSE)

WIND/WAVES Summary Plot (Page 1) for 07-MAR-2012, DOY = 67



RAD2
 Antenna Ey
 Mode LIN(1)
 SUM/SEP SEP
 Toggle OFF

RAD1
 Antenna Ex
 Mode LIS(2,4)
 SUM/SEP SUM
 Toggle OFF

TNR
 Antenna ExEy
 Mode A-32
 Sweep ACE