

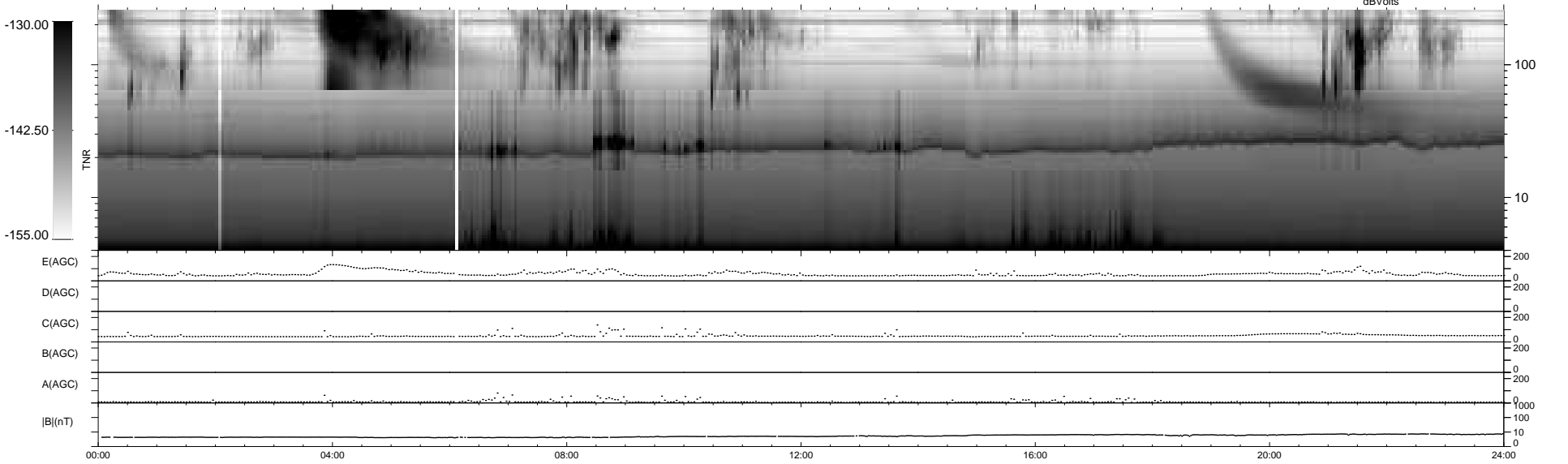
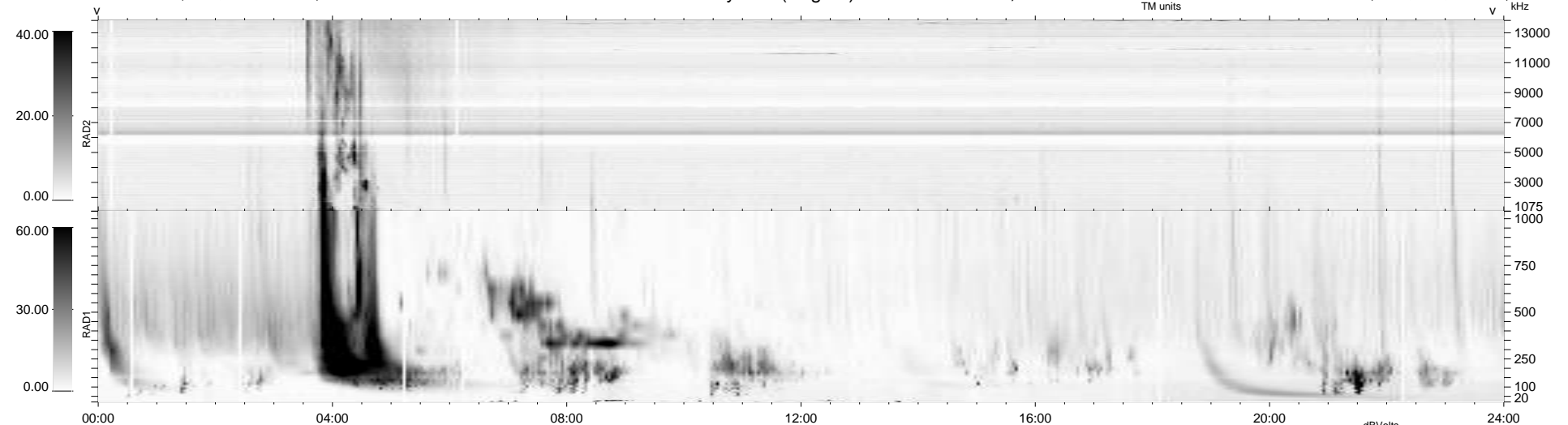
25 bad + 914 good MF/939MF projected (97%) - 0 missing MFs
 Avg interval = 180 secs
 Re = 224.65 (206.09, 88.98, -8.80 GSE)

windlib 2.0b

LZ version = v01

WIND/WAVES Summary Plot (Page 1) for 05-MAR-2012, DOY = 65

DAILY 2012-03-06 17:43:08
 Re = 225.89 (206.86, 90.38, -8.14 GSE)



RAD2
 Antenna Ey
 Mode LIN(1)
 SUM/SEP SEP
 Toggle OFF
 RAD1
 Antenna Ex
 Mode LIS(2,4)
 SUM/SEP SUM
 Toggle OFF
 TNR
 Antenna ExEy
 Mode A-32
 Sweep ACE