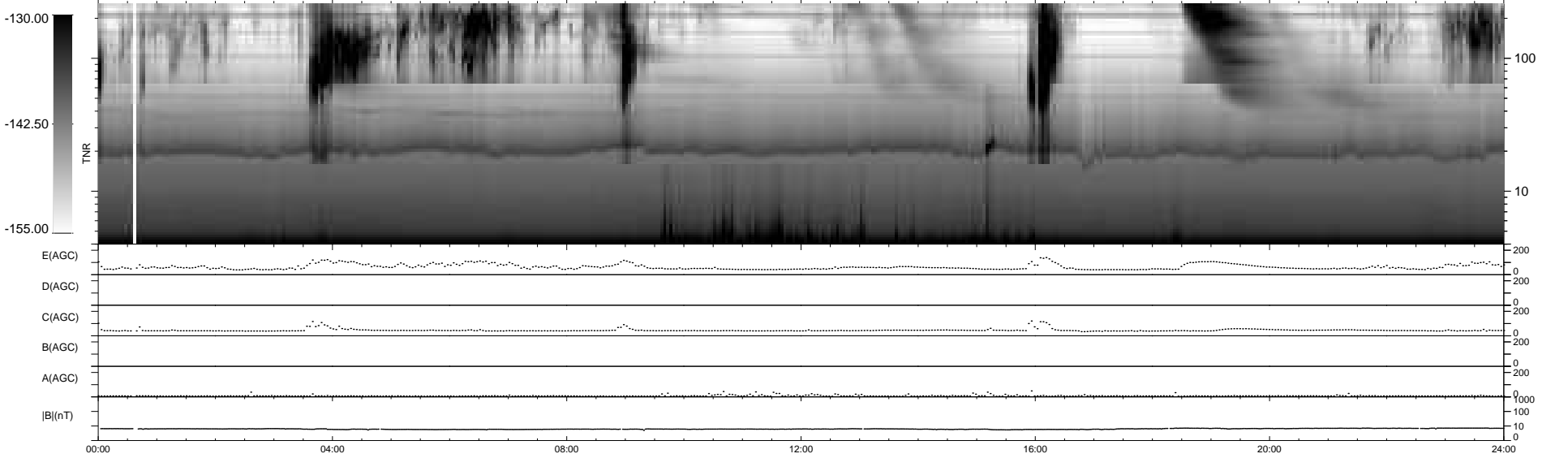
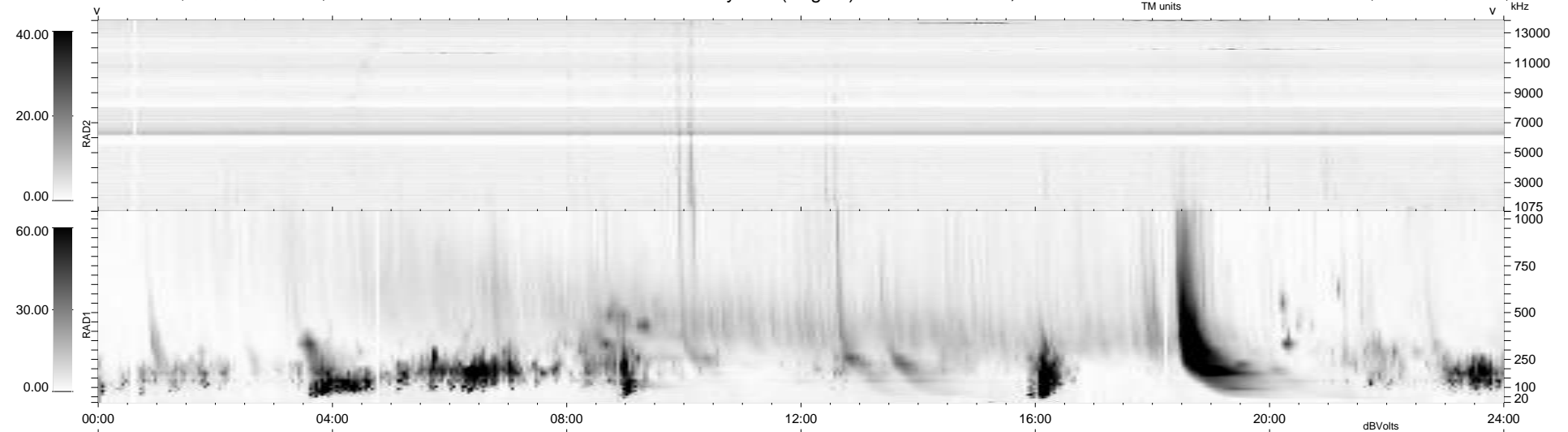


9 bad + 931 good MF/940MF projected (99%) - 0 missing MFs
 Avg interval = 180 secs
 Re = 222.15 (204.70, 85.72, -10.10 GSE)

windlib 2.0b LZ version = v01
 DAILY 2012-03-04 15:11:08
 Re = 223.39 (205.36, 87.41, -9.47 GSE)

WIND/WAVES Summary Plot (Page 1) for 03-MAR-2012, DOY = 63



RAD2
 Antenna Ey
 Mode LIN(1)
 SUM/SEP SEP
 Toggle OFF

RAD1
 Antenna Ex
 Mode LIS(2,4)
 SUM/SEP SUM
 Toggle OFF

TNR
 Antenna ExEy
 Mode A-32
 Sweep ACE