

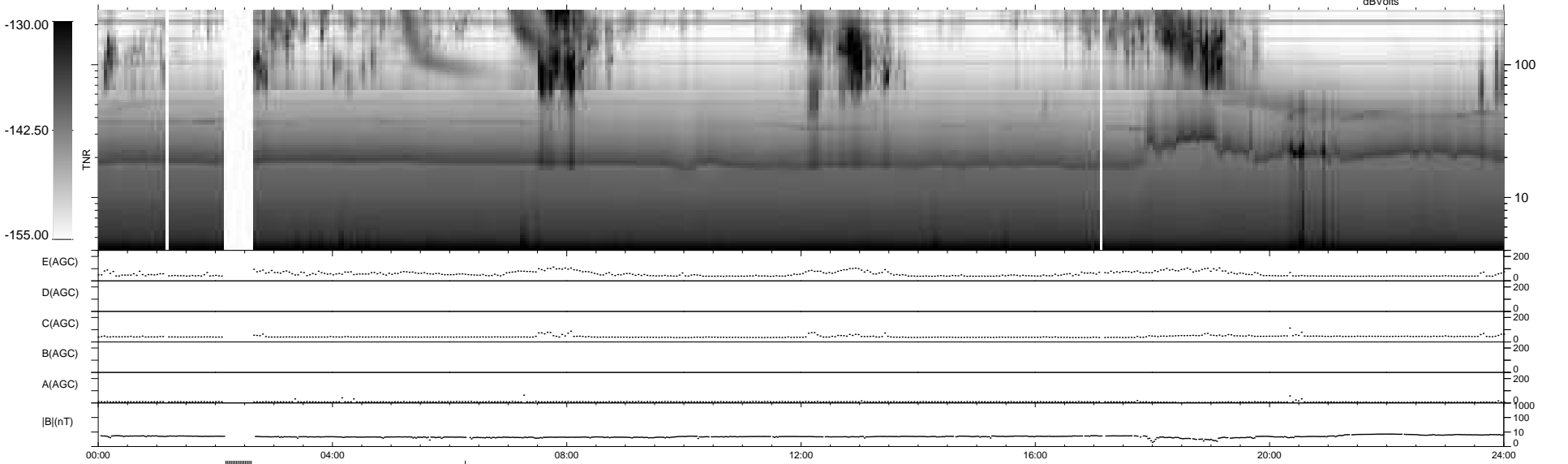
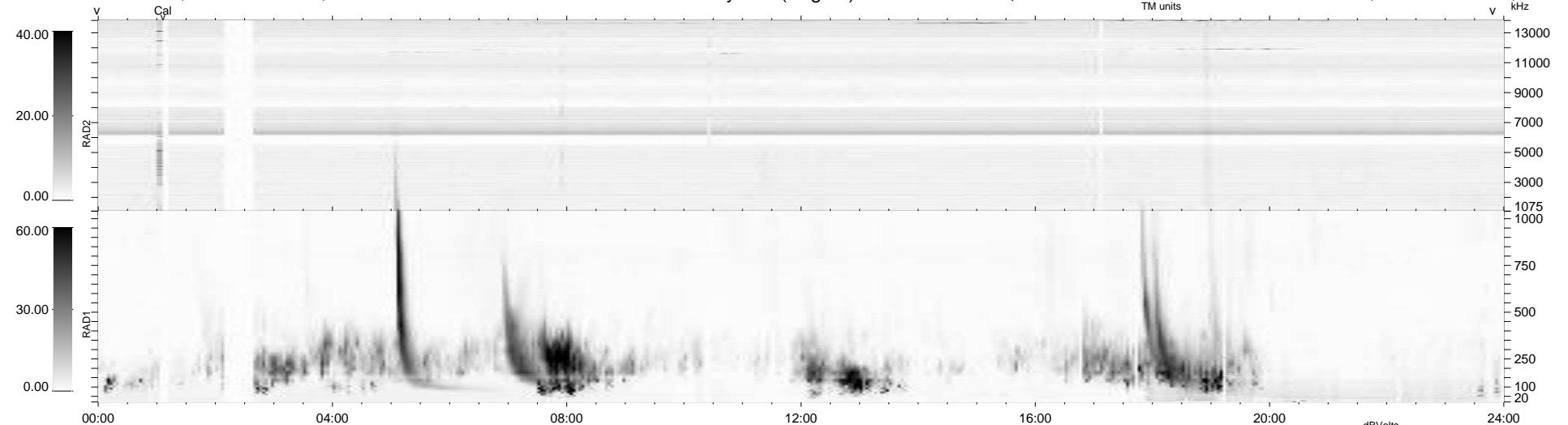
23 bad + 897 good MF/939MF projected (95%) - 19 missing MFs
 Avg interval = 180 secs
 Re = 220.91 (204.08, 83.87, -10.73 GSE)

windlib 2.0b

LZ version = v01

WIND/WAVES Summary Plot (Page 1) for 02-MAR-2012, DOY = 62

DAILY 2012-03-03 20:11:07
 Re = 222.15 (204.70, 85.71, -10.11 GSE)



```

RAD2
Antenna Ey .....
Mode LIN(1) .....
SUM/SEP SEP .....
Toggle OFF .....

RAD1
Antenna Ex .....
Mode LIS(2,4) .....
SUM/SEP SUM .....
Toggle OFF .....

TNR
Antenna ExEy .....
Mode A-32 .....
Sweep ACE .....
  
```