

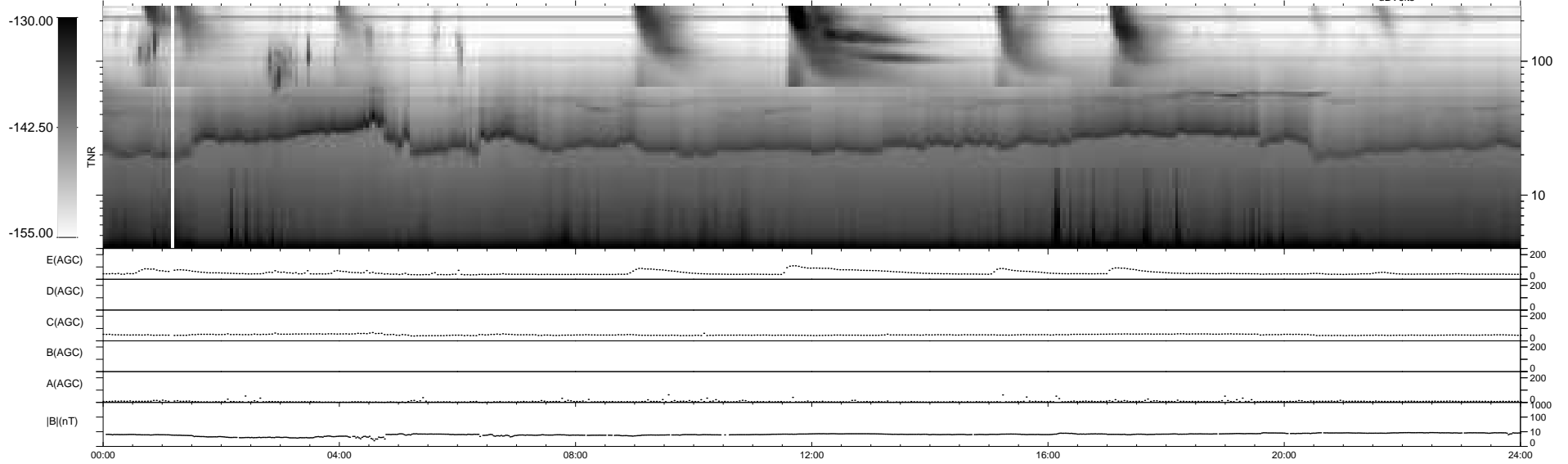
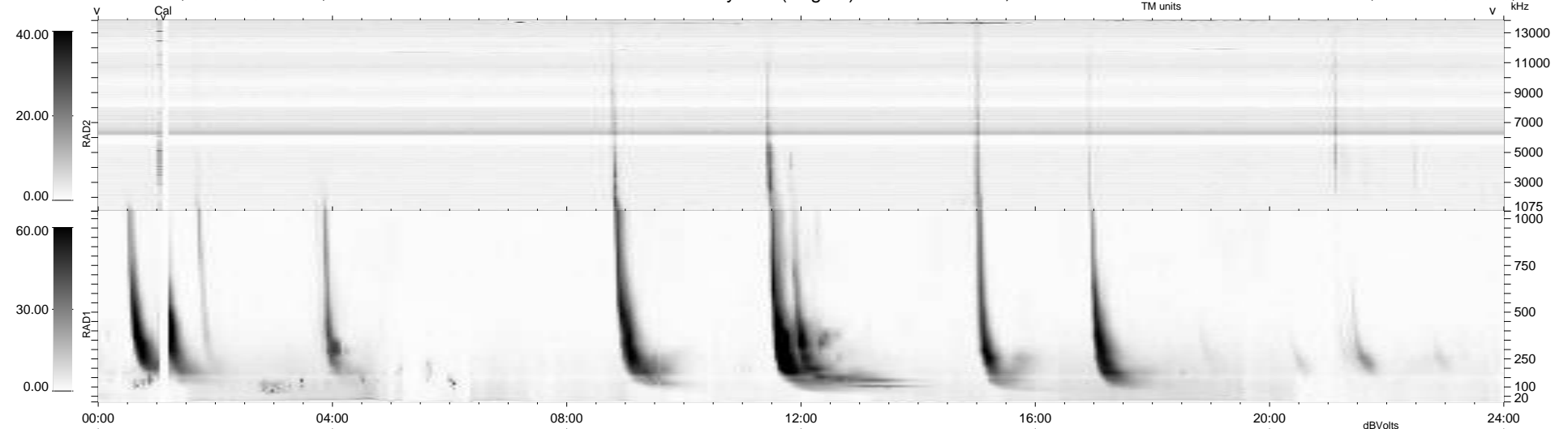
17 bad + 922 good MF/939MF projected (98%) - 0 missing MFs  
 Avg interval = 180 secs  
 Re = 218.39 (202.96, 79.75, -11.94 GSE)

windlib 2.0b

LZ version = v01

### WIND/WAVES Summary Plot (Page 1) for 29-FEB-2012, DOY = 60

DAILY 2012-03-02 03:11:07  
 Re = 219.64 (203.50, 81.87, -11.34 GSE)



```

RAD2
Antenna Ey .....
Mode LIN(1) .....
SUM/SEP SEP .....
Toggle OFF .....

RAD1
Antenna Ex .....
Mode LIS(2,4) .....
SUM/SEP SUM .....
Toggle OFF .....

TNR
Antenna ExEy .....
Mode A-32 .....
Sweep ACE .....
  
```