

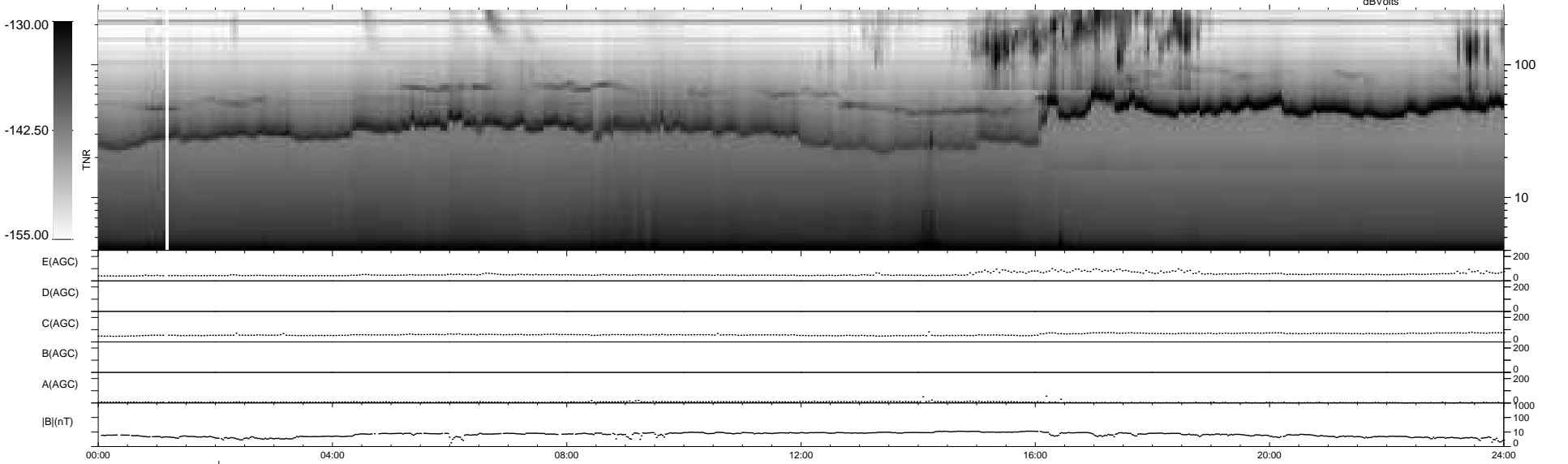
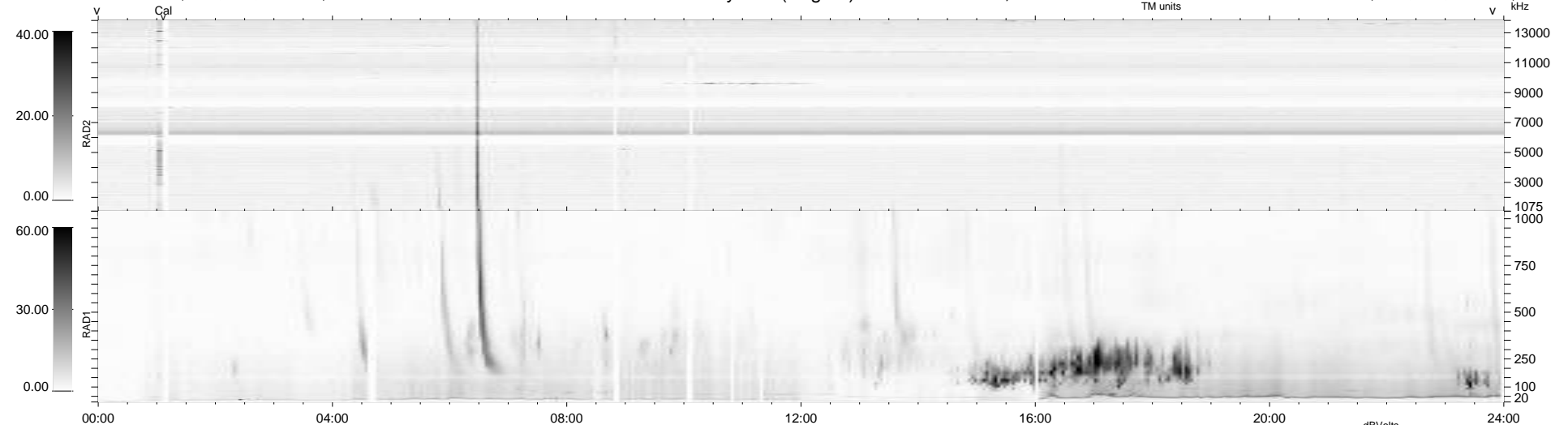
27 bad + 911 good MF/939MF projected (97%) - 1 missing MF
 Avg interval = 180 secs
 Re = 199.26 (195.91, 31.23, -18.64 GSE)

windlib 2.0b

LZ version = v01

WIND/WAVES Summary Plot (Page 1) for 13-FEB-2012, DOY = 44

DAILY 2012-02-14 22:24:06
 Re = 200.15 (196.26, 34.69, -18.42 GSE)



```

RAD2
Antenna Ey .....
Mode LIN(1) .....
SUM/SEP SEP .....
Toggle OFF .....

RAD1
Antenna Ex .....
Mode LIS(2,4) .....
SUM/SEP SUM .....
Toggle OFF .....

TNR
Antenna ExEy .....
Mode A-32 .....
Sweep ACE .....
  
```