

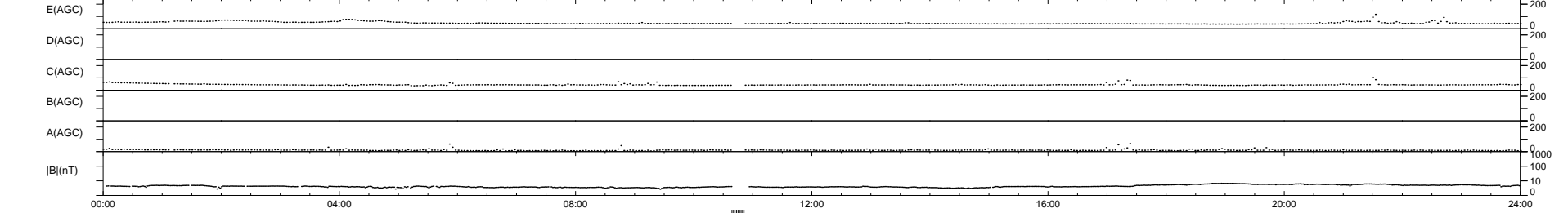
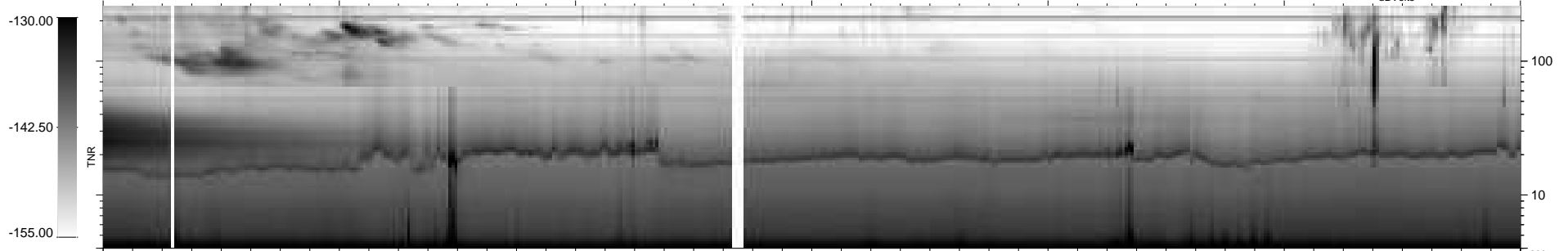
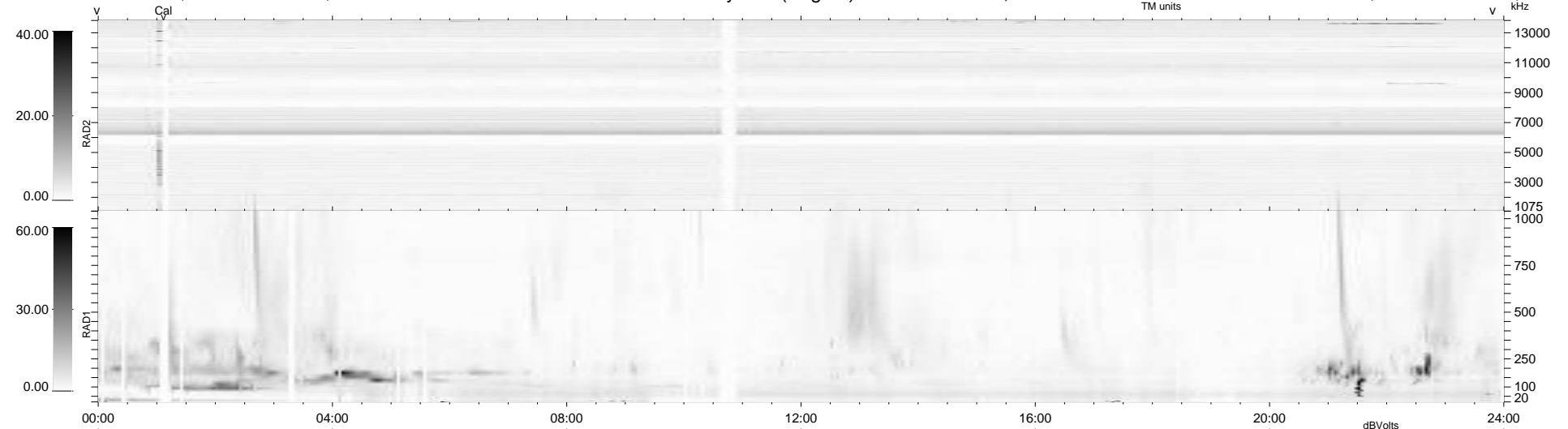
22 bad + 908 good MF/939MF projected (96%) - 9 missing MFs
 Avg interval = 180 secs
 Re = 198.55 (195.95, -27.03, -17.11 GSE)

windlib 2.0b

LZ version = v01

WIND/WAVES Summary Plot (Page 1) for 28-JAN-2012, DOY = 28

DAILY 2012-01-29 20:04:06
 Re = 197.89 (195.73, -23.34, -17.46 GSE)



```

RAD2
Antenna Ey .....
Mode LIN(1) .....
SUM/SEP SEP .....
Toggle OFF .....

RAD1
Antenna Ex .....
Mode LIS(2,4) .....
SUM/SEP SUM .....
Toggle OFF .....

TNR
Antenna ExEy .....
Mode A-32 .....
Sweep ACE .....
  
```