

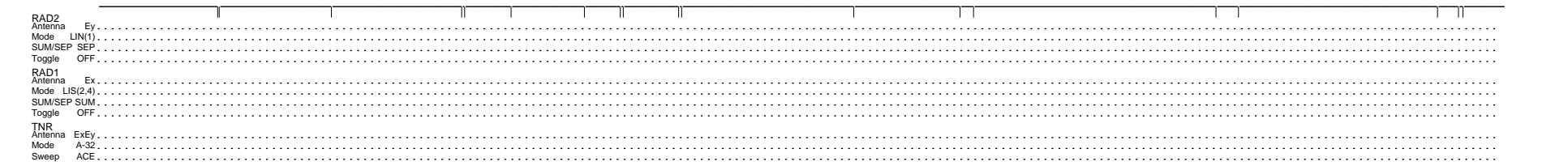
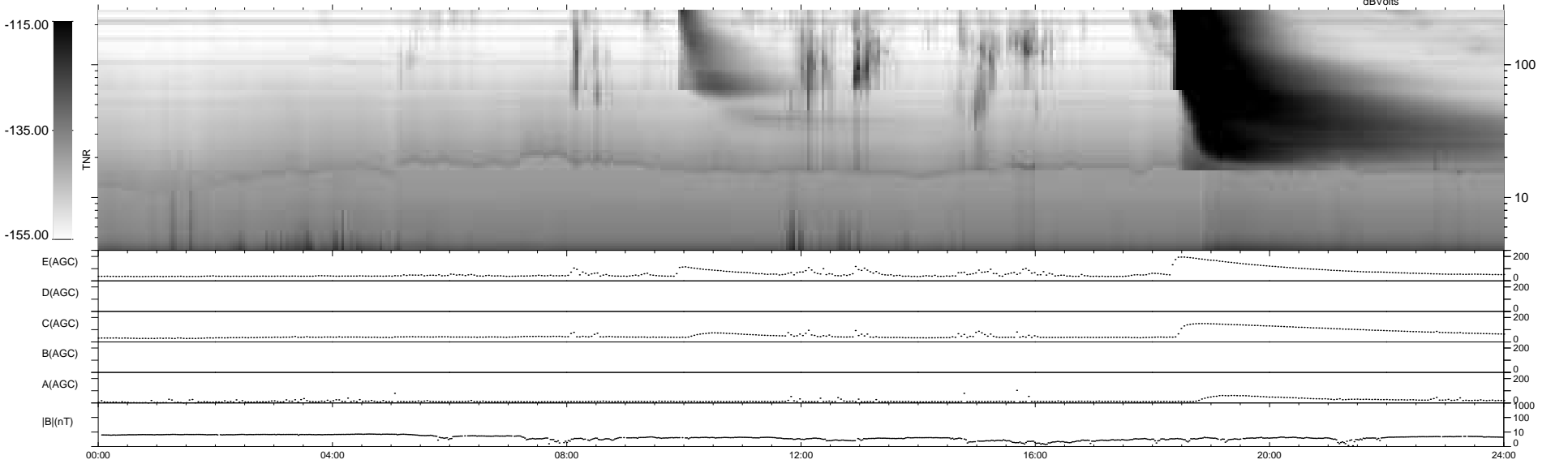
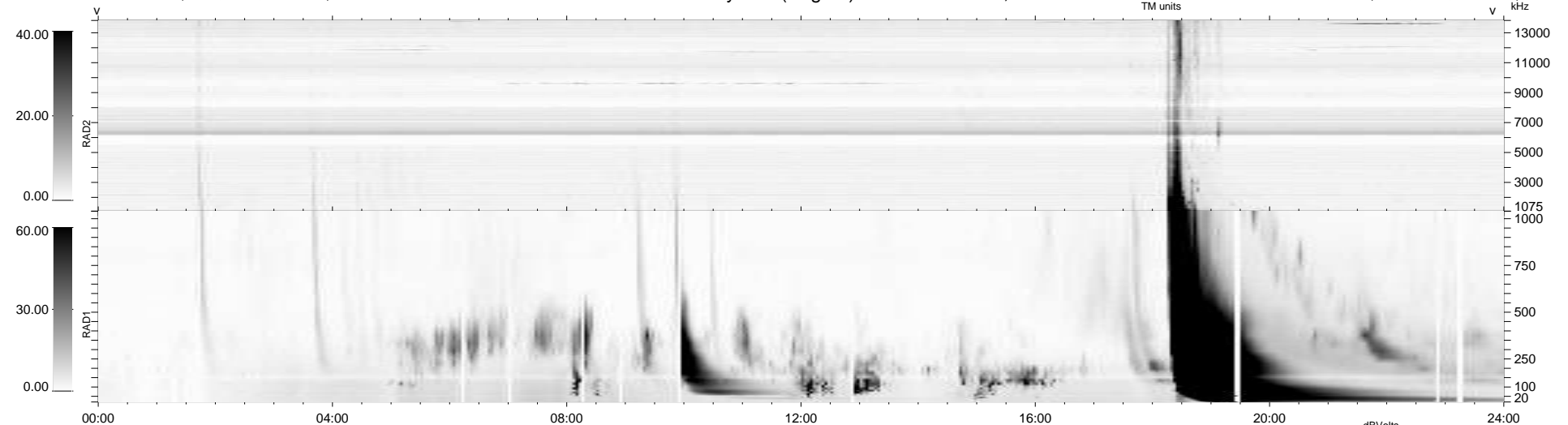
19 bad + 920 good MF/939MF projected (97%) - 0 missing MFs
 Avg interval = 180 secs
 Re = - 199.28 (196.18, -30.72, -16.74 GSE)

windlib 2.0b

LZ version = v03

WIND/WAVES Summary Plot (Page 1) for 27-JAN-2012, DOY = 27

DAILY 2012-02-02 14:04:09
 Re = 198.55 (195.95, -27.05, -17.11 GSE)



RAD2
 Antenna Ey
 Mode LIN(1)
 SUM/SEP SEP
 Toggle OFF

RAD1
 Antenna Ex
 Mode LIS(2,4)
 SUM/SEP SUM
 Toggle OFF

TNR
 Antenna ExEy
 Mode A-32
 Sweep ACE