

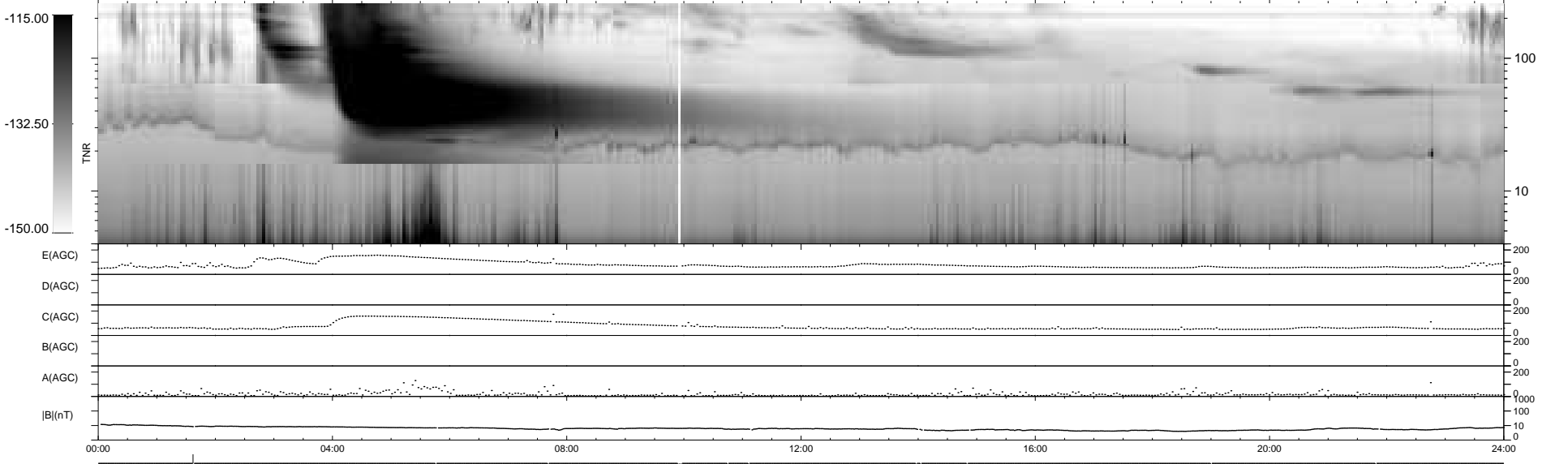
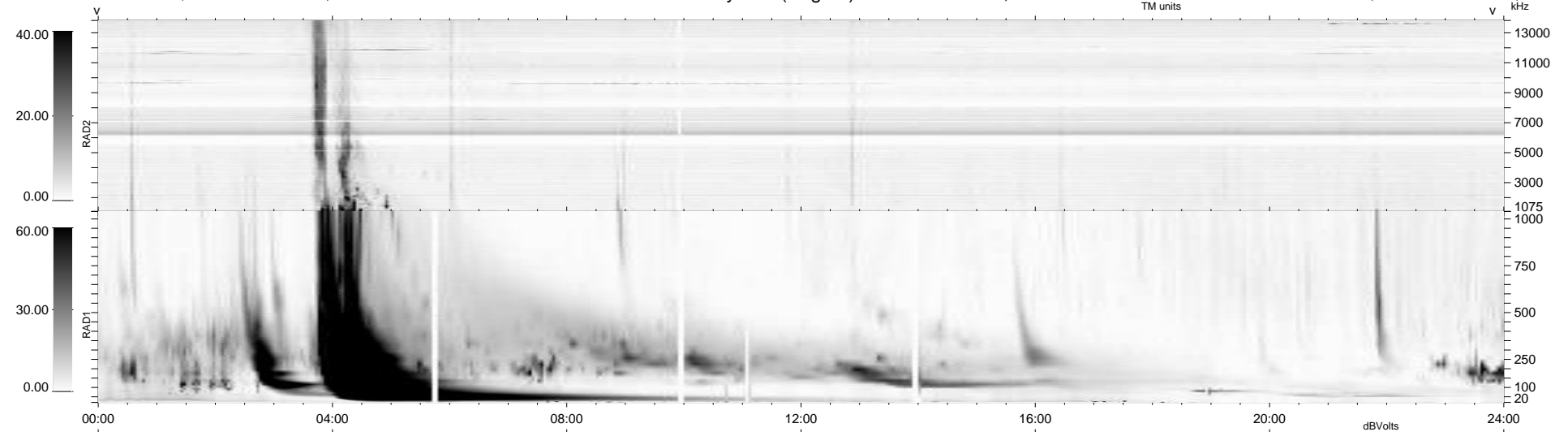
12 bad + 926 good MF/939MF projected (98%) - 1 missing MF  
 Avg interval = 180 secs  
 Re = -202.72 (197.07, -45.08, -14.97 GSE)

windlib 2.0b

LZ version = v01

### WIND/WAVES Summary Plot (Page 1) for 23-JAN-2012, DOY = 23

DAILY 2012-01-24 16:04:06  
 Re = 201.80 (196.86, -41.60, -15.44 GSE)



RAD2  
 Antenna Ey .....  
 Mode LIN(1) .....  
 SUM/SEP SEP .....  
 Toggle OFF .....  
 RAD1  
 Antenna Ex .....  
 Mode LIS(2,4) .....  
 SUM/SEP SUM .....  
 Toggle OFF .....  
 TNR  
 Antenna ExEy .....  
 Mode A-32 .....  
 Sweep ACE .....