

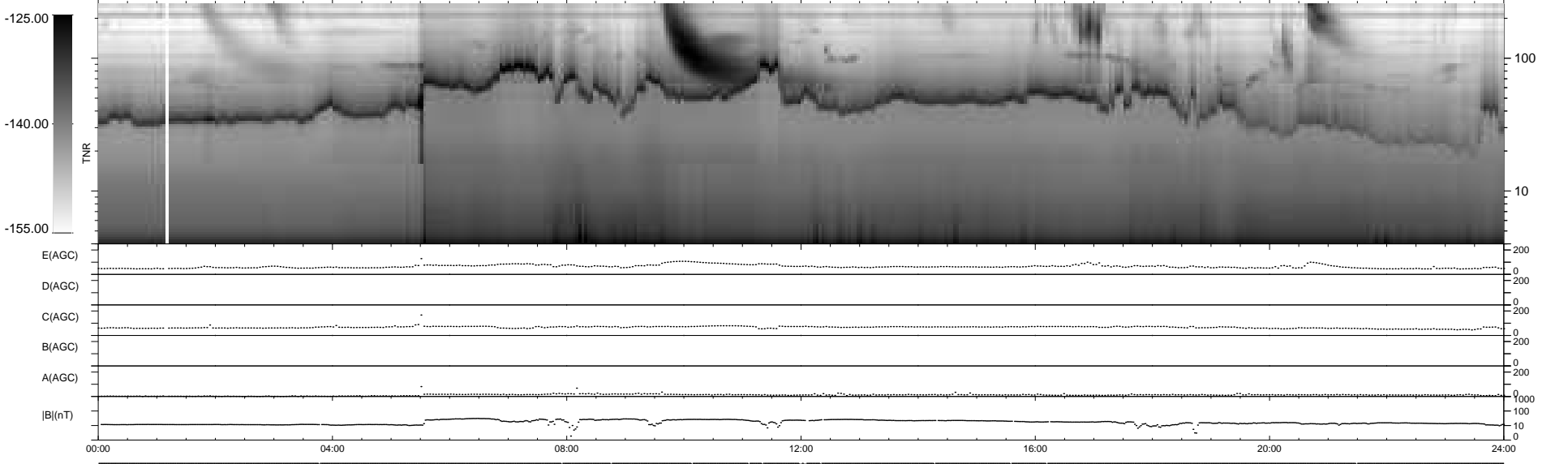
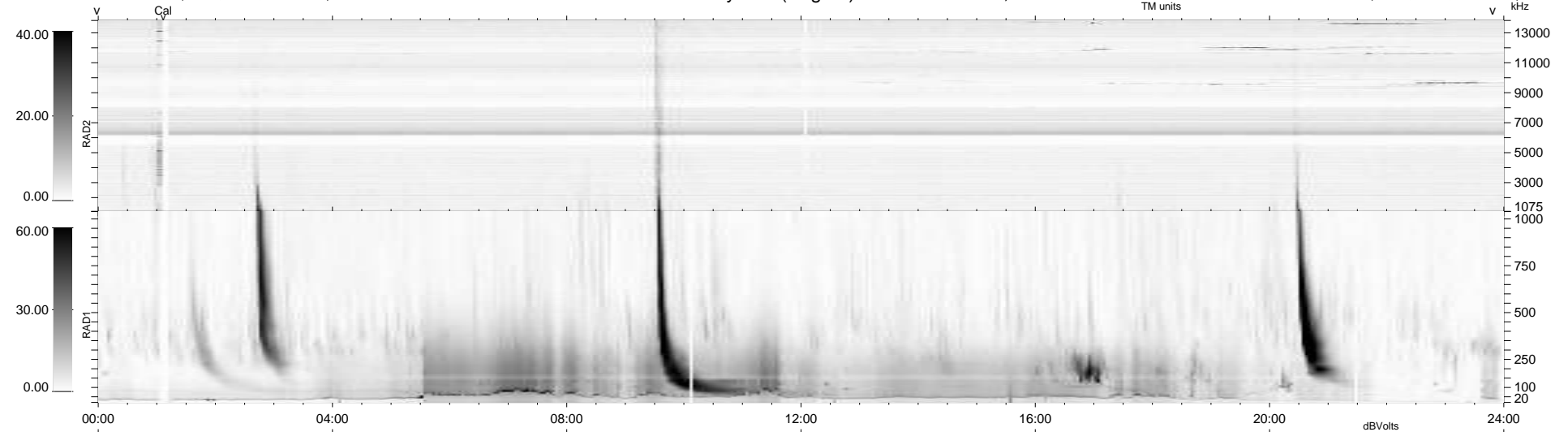
15 bad + 924 good MF/939MF projected (98%) - 0 missing MFs  
 Avg interval = 180 secs  
 Re = -203.67 (197.28, -48.52, -14.46 GSE)

windlib 2.0b

LZ version = v01

### WIND/WAVES Summary Plot (Page 1) for 22-JAN-2012, DOY = 22

DAILY 2012-01-23 19:04:07  
 Re = 202.72 (197.07, -45.11, -14.96 GSE)



RAD2  
 Antenna Ey .....  
 Mode LIN(1) .....  
 SUM/SEP SEP .....  
 Toggle OFF .....  
 RAD1  
 Antenna Ex .....  
 Mode LIS(2,4) .....  
 SUM/SEP SUM .....  
 Toggle OFF .....  
 TNR  
 Antenna ExEy .....  
 Mode A-32 .....  
 Sweep ACE .....