

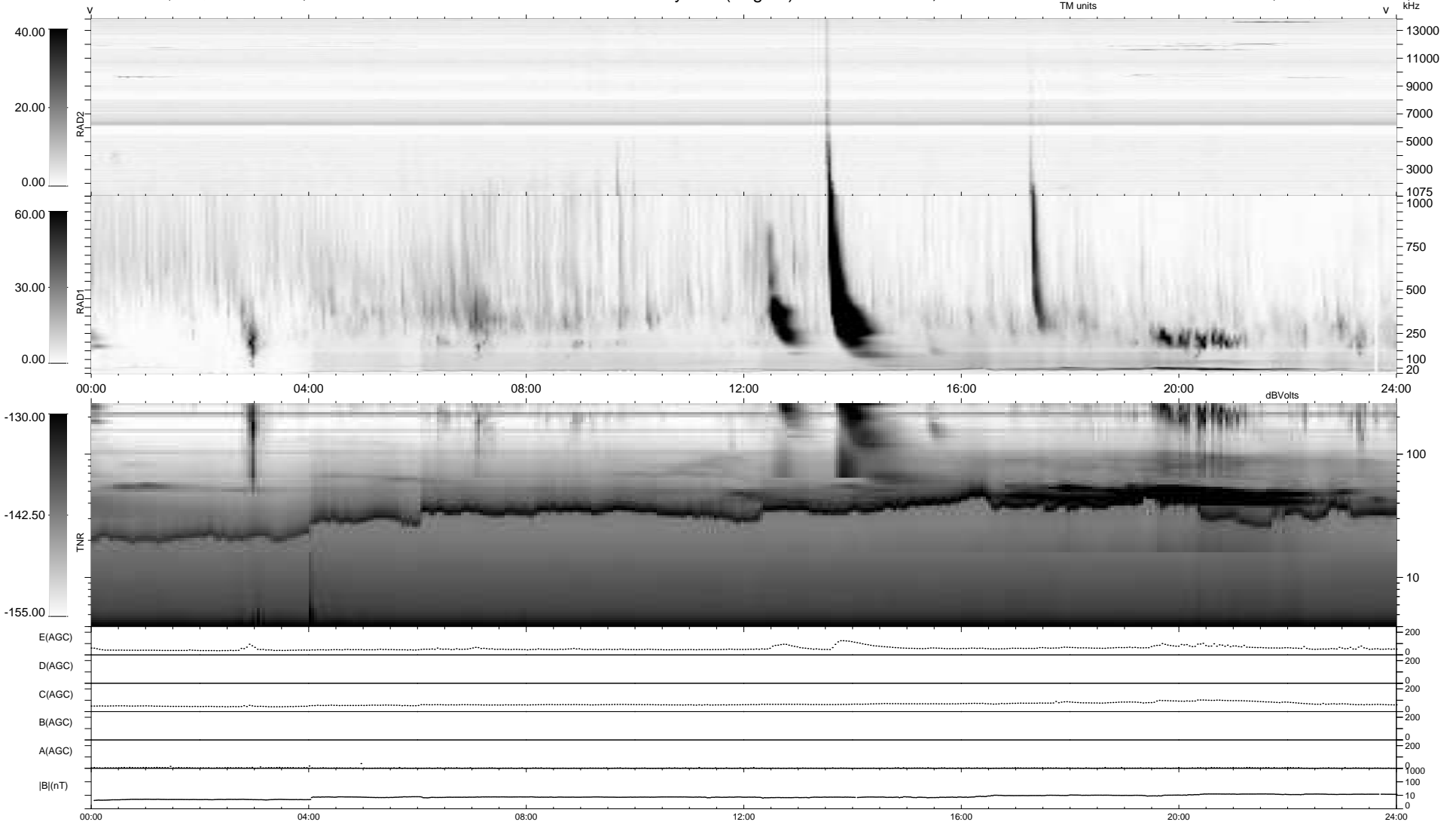
4 bad + 935 good MF/939MF projected (99%) - 0 missing MFs
 Avg interval = 180 secs
 Re = 204.65 (197.48, -51.86, -13.93 GSE)

windlib 2.0b

LZ version = v02

WIND/WAVES Summary Plot (Page 1) for 21-JAN-2012, DOY = 21

DAILY 2012-01-23 17:04:10
 Re = 203.68 (197.28, -48.54, -14.46 GSE)



RAD2
 Antenna Ey
 Mode LIN(1)
 SUM/SEP SEP
 Toggle OFF
 RAD1
 Antenna Ex
 Mode LIS(2,4)
 SUM/SEP SUM
 Toggle OFF
 TNR
 Antenna ExEy
 Mode A-32
 Sweep ACE