

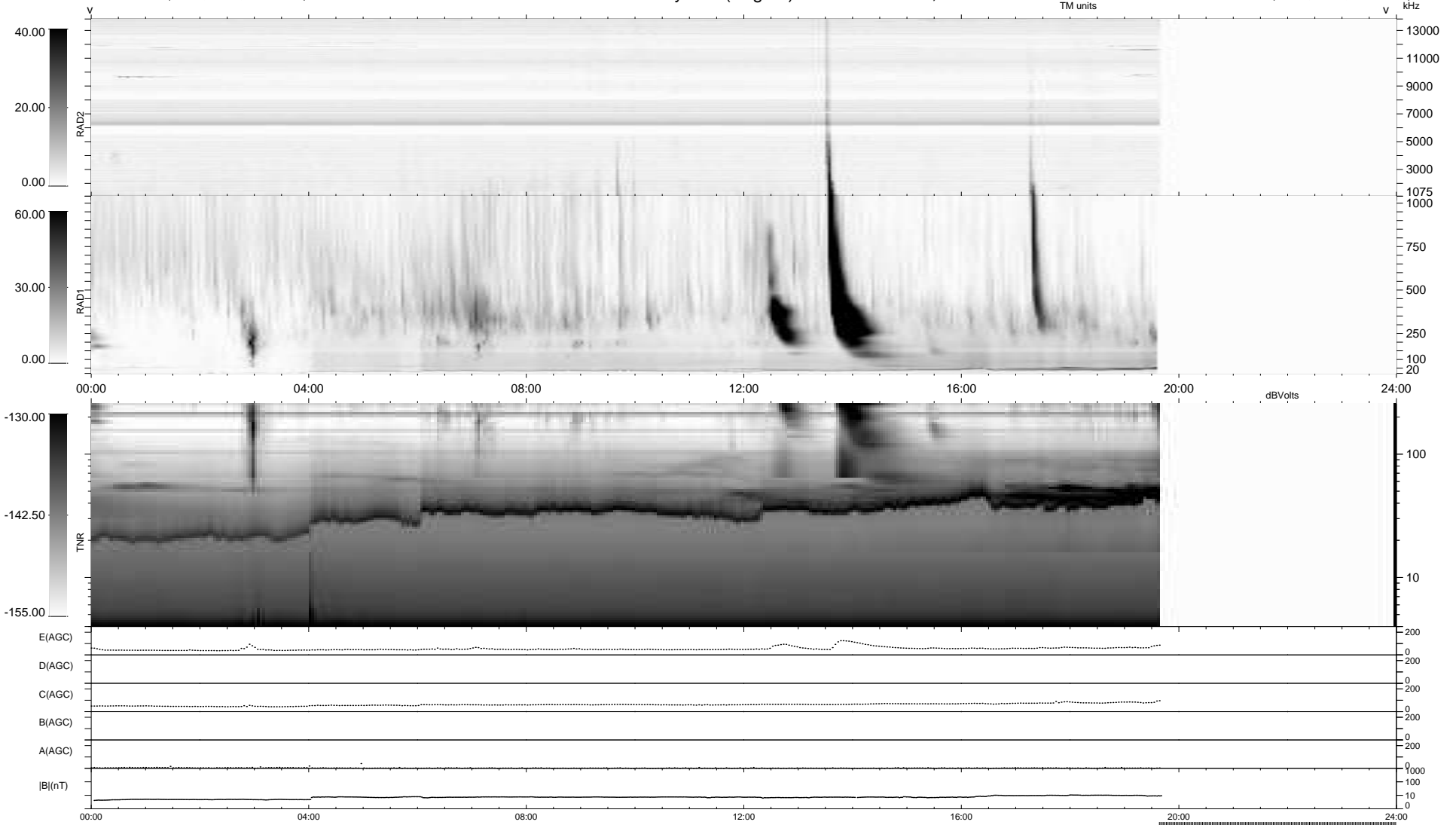
4 bad + 764 good MF/939MF projected (81%) - 171 missing MFs
 Avg interval = 180 secs
 Re = -204.65 (197.48, -51.86, -13.93 GSE)

windlib 2.0b

LZ version = v01

WIND/WAVES Summary Plot (Page 1) for 21-JAN-2012, DOY = 21

DAILY 2012-01-23 13:04:06
 Re = 203.68 (197.28, -48.54, -14.46 GSE)



```

RAD2
Antenna Ey .....
Mode LIN(1) .....
SUM/SEP SEP .....
Toggle OFF .....

RAD1
Antenna Ex .....
Mode LIS(2,4) .....
SUM/SEP SUM .....
Toggle OFF .....

TNR
Antenna ExEy .....
Mode A-32 .....
Sweep ACE .....
  
```