

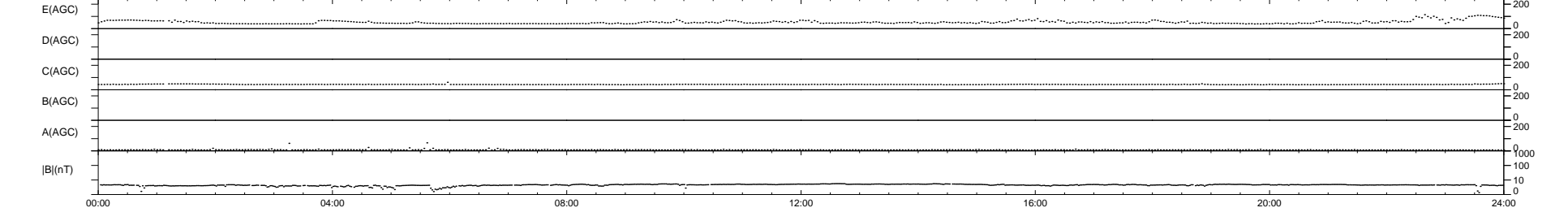
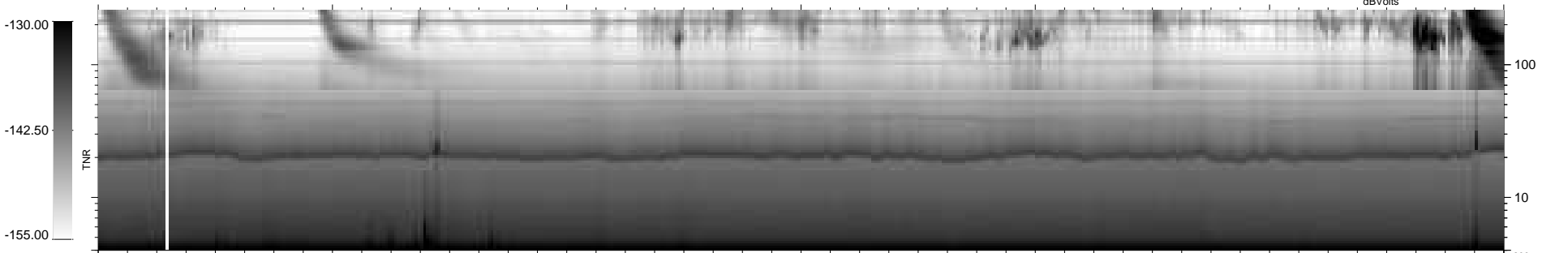
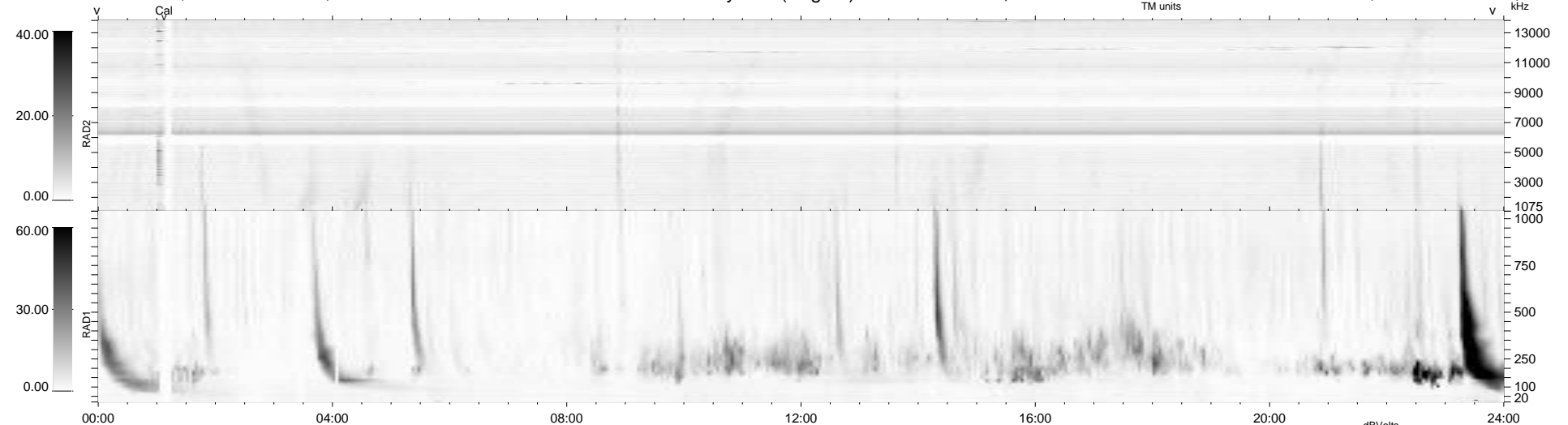
15 bad + 925 good MF/940MF projected (98%) - 0 missing MFs
 Avg interval = 180 secs
 Re = 207.71 (198.09, -61.27, -12.22 GSE)

windlib 2.0b

LZ version = v01

WIND/WAVES Summary Plot (Page 1) for 18-JAN-2012, DOY = 18

DAILY 2012-01-19 06:04:07
 Re = 206.68 (197.88, -58.27, -12.81 GSE)



RAD2
 Antenna Ey
 Mode LIN(1)
 SUM/SEP SEP
 Toggle OFF
 RAD1
 Antenna Ex
 Mode LIS(2,4)
 SUM/SEP SUM
 Toggle OFF
 TNR
 Antenna ExEy
 Mode A-32
 Sweep ACE