

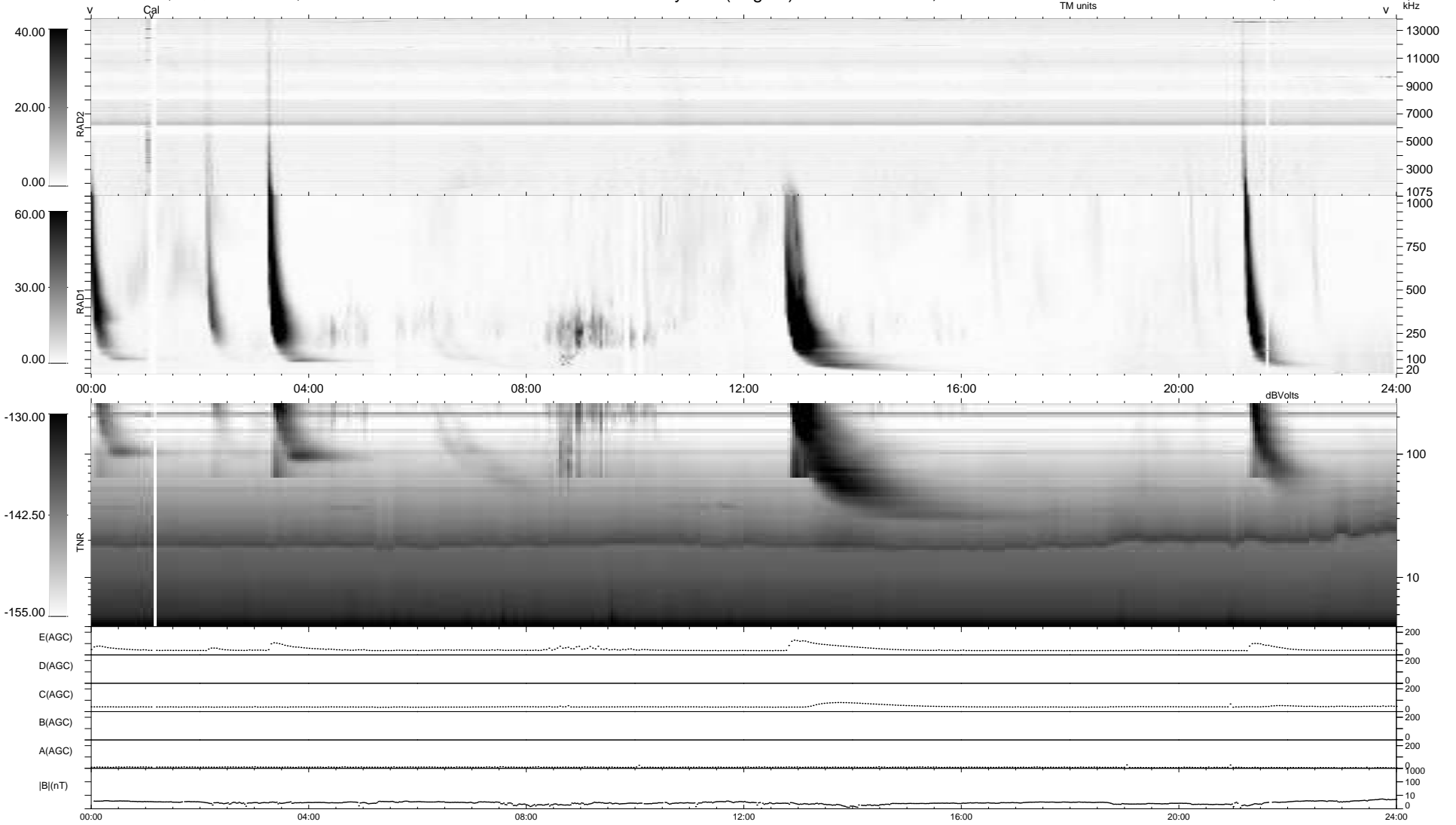
12 bad + 927 good MF/939MF projected (98%) - 0 missing MFs
 Avg interval = 180 secs
 Re = 212.06 (199.22, -72.04, -9.63 GSE)

windlib 2.0b

LZ version = v01

WIND/WAVES Summary Plot (Page 1) for 14-JAN-2012, DOY = 14

DAILY 2012-01-15 15:06:01
 Re = 210.95 (198.88, -69.57, -10.30 GSE)



RAD2
 Antenna Ey
 Mode LIN(1)
 SUM/SEP SEP
 Toggle OFF
 RAD1
 Antenna Ex
 Mode LIS(2,4)
 SUM/SEP SUM
 Toggle OFF
 TNR
 Antenna ExEy
 Mode A-32
 Sweep ACE