

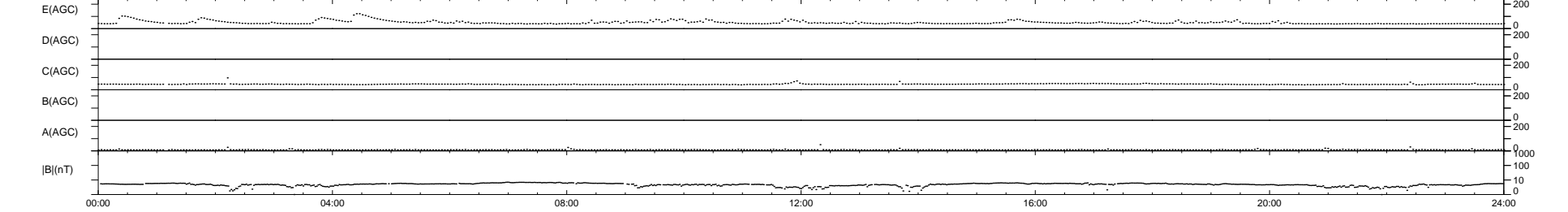
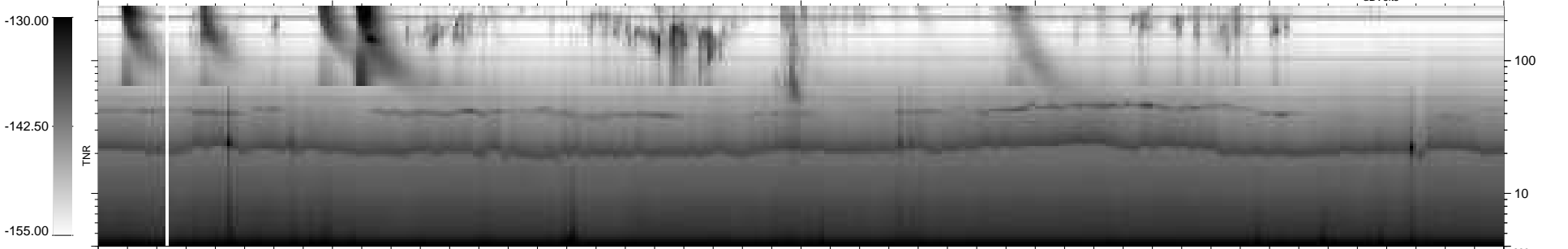
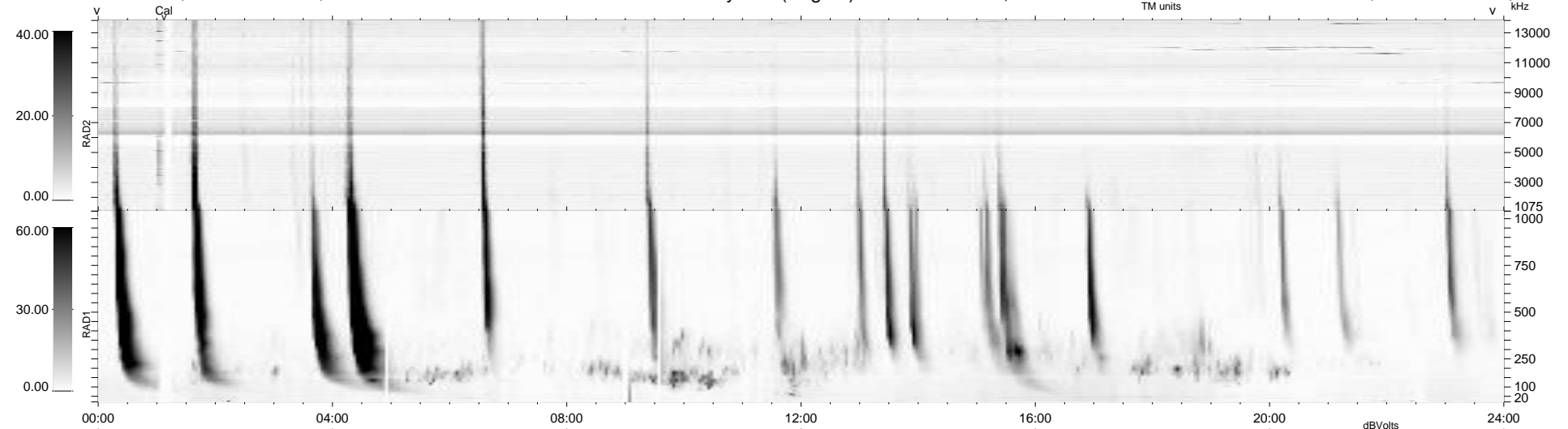
14 bad + 926 good MF/940MF projected (98%) - 0 missing MFs  
 Avg interval = 180 secs  
 Re = 216.86 (201.18, -80.69, -6.76 GSE)

windlib 2.0b

LZ version = v01

### WIND/WAVES Summary Plot (Page 1) for 10-JAN-2012, DOY = 10

DAILY 2012-01-13 18:41:59  
 Re = 215.62 (200.59, -78.74, -7.50 GSE)



RAD2  
 Antenna Ey .....  
 Mode LIN(1) .....  
 SUM/SEP SEP .....  
 Toggle OFF .....  
 RAD1  
 Antenna Ex .....  
 Mode LIS(2,4) .....  
 SUM/SEP SUM .....  
 Toggle OFF .....  
 TNR  
 Antenna ExEy .....  
 Mode A-32 .....  
 Sweep ACE .....