

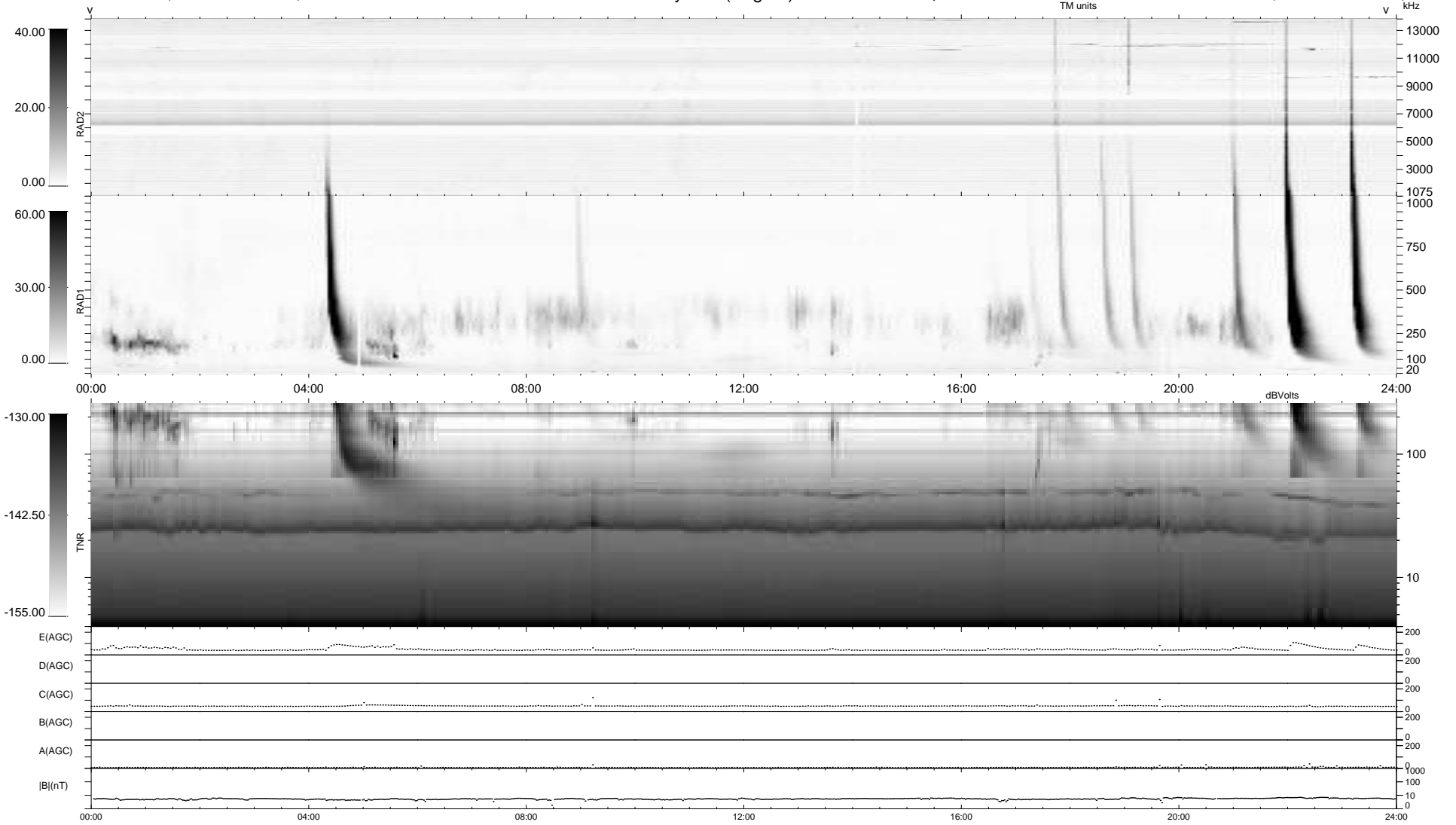
6 bad + 933 good MF/939MF projected (99%) - 0 missing MFs  
 Avg interval = 180 secs  
 Re = 218.14 (201.83, -82.54, -6.01 GSE)

windlib 2.0b

LZ version = v01

### WIND/WAVES Summary Plot (Page 1) for 09-JAN-2012, DOY = 9

DAILY 2012-01-13 18:41:03  
 Re = 216.87 (201.18, -80.71, -6.76 GSE)



```

RAD2
Antenna Ey .....
Mode LIN(1) .....
SUM/SEP SEP .....
Toggle OFF .....

RAD1
Antenna Ex .....
Mode LIS(2,4) .....
SUM/SEP SUM .....
Toggle OFF .....

TNR
Antenna ExEy .....
Mode A-32 .....
Sweep ACE .....
  
```