

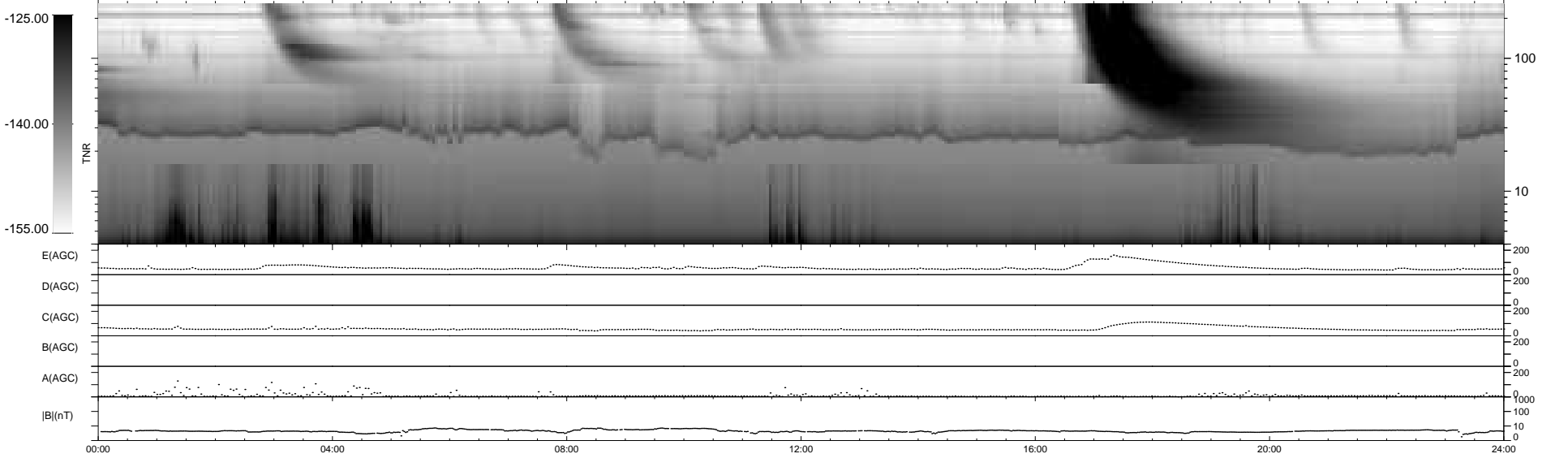
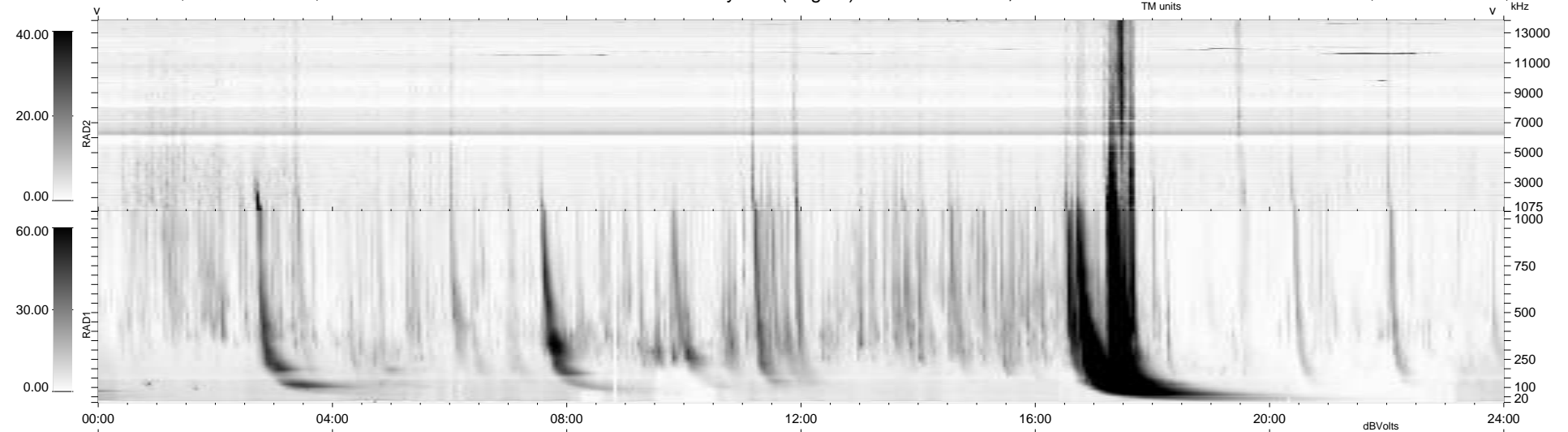
14 bad + 925 good MF/939MF projected (98%) - 0 missing MFs
 Avg interval = 180 secs
 Re = 230.61 (210.36, -94.50, 1.01 GSE)

windlib 2.0b

LZ version = v01

WIND/WAVES Summary Plot (Page 1) for 31-DEC-2011, DOY = 365

DAILY 2012-01-13 18:33:13
 Re = 229.21 (209.24, -93.56, 0.24 GSE)



RAD2
 Antenna Ey
 Mode LIN(1)
 SUM/SEP SEP
 Toggle OFF

RAD1
 Antenna Ex
 Mode LIS(2,4)
 SUM/SEP SUM
 Toggle OFF

TNR
 Antenna ExEy
 Mode A-32
 Sweep ACE