

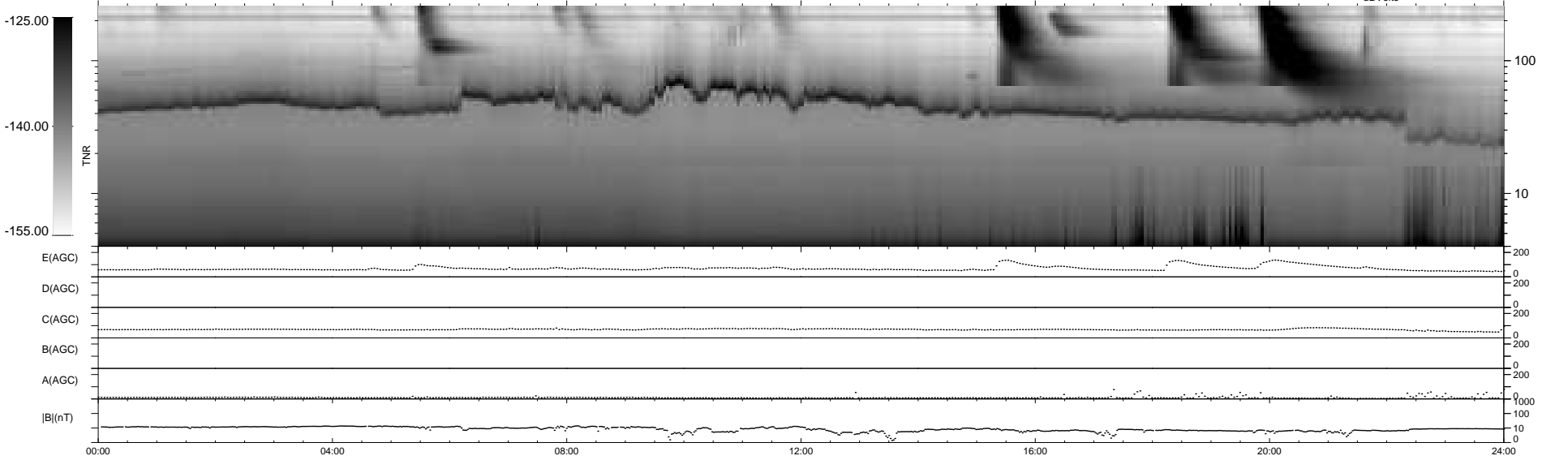
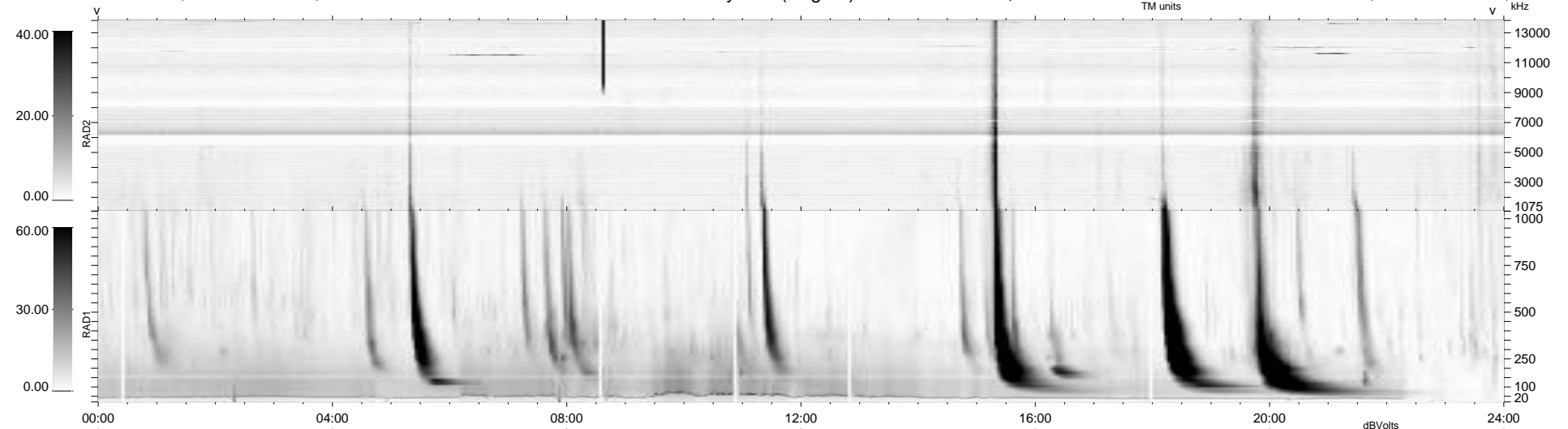
15 bad + 924 good MF/939MF projected (98%) - 0 missing MFs
 Avg interval = 180 secs
 Re = -233.38 (212.67, -96.08, 2.56 GSE)

windlib 2.0b

LZ version = v01

WIND/WAVES Summary Plot (Page 1) for 29-DEC-2011, DOY = 363

DAILY 2012-01-13 18:31:20
 Re = 232.02 (211.51, -95.34, 1.79 GSE)



RAD2
 Antenna Ey
 Mode LIN(1)
 SUM/SEP SEP
 Toggle OFF
 RAD1
 Antenna Ex
 Mode LIS(2,4)
 SUM/SEP SUM
 Toggle OFF
 TNR
 Antenna ExEy
 Mode A-32
 Sweep ACE