

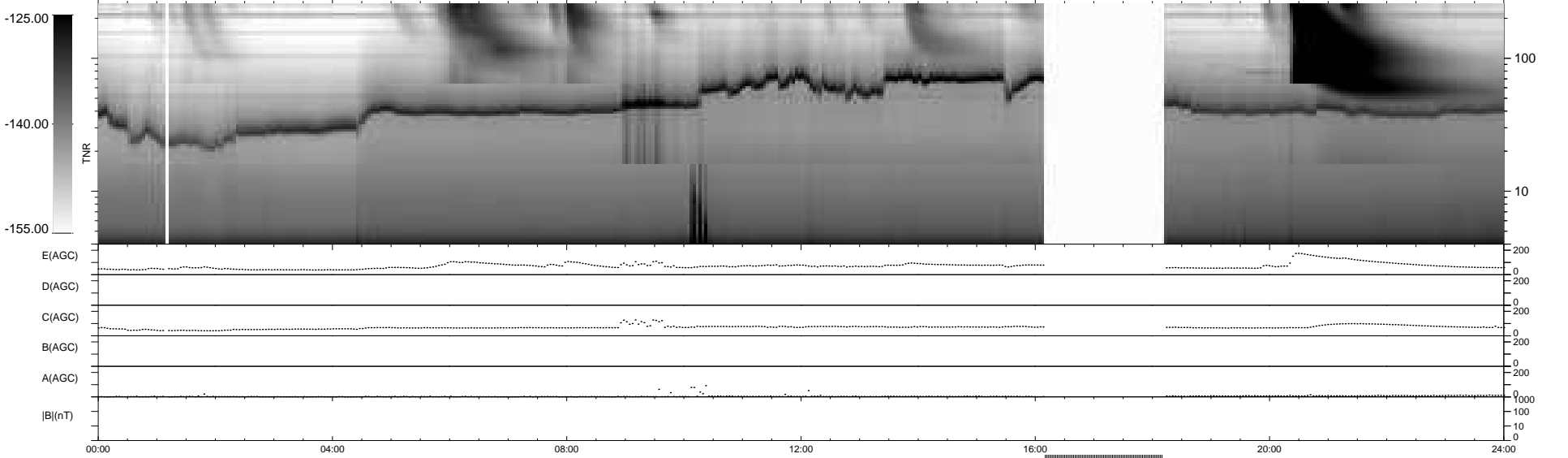
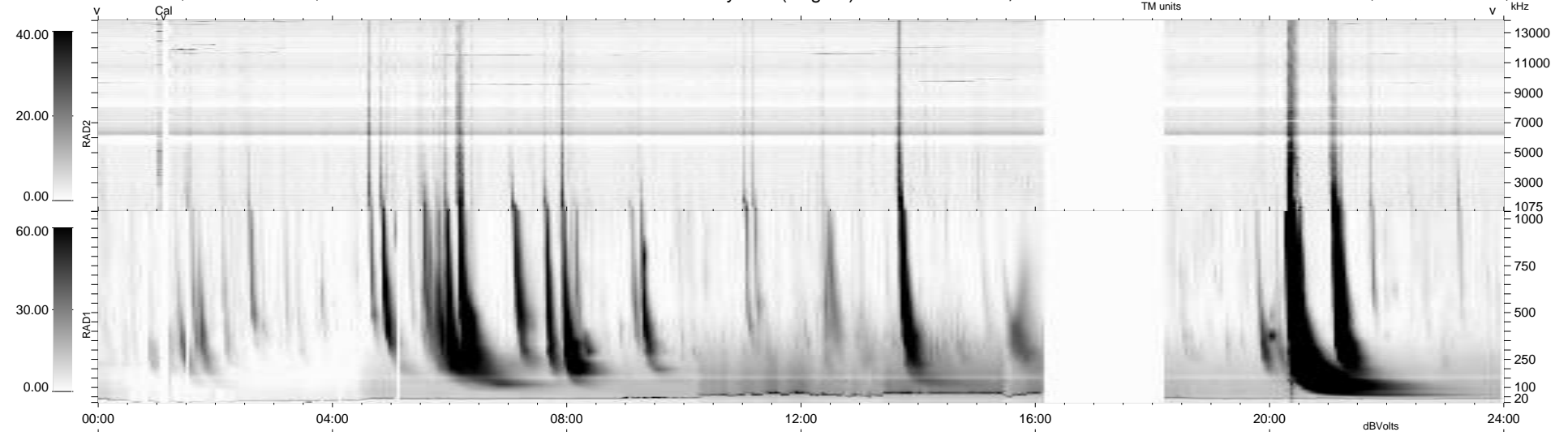
14 bad + 846 good MF/939MF projected (90%) - 79 missing MFs
 Avg interval = 180 secs
 Re = 234.73 (213.84, -96.73, 3.33 GSE)

windlib 2.0b

LZ version = v02

WIND/WAVES Summary Plot (Page 1) for 28-DEC-2011, DOY = 362

DAILY 2011-12-30 13:04:06
 Re = 233.39 (212.68, -96.09, 2.57 GSE)



RAD2
 Antenna Ey
 Mode LIN(1)
 SUM/SEP SEP
 Toggle OFF
 RAD1
 Antenna Ex
 Mode LIS(2,4)
 SUM/SEP SUM
 Toggle OFF
 TNR
 Antenna ExEy
 Mode A-32
 Sweep ACE